

DISCOVER HOW YOUR HEART BEATS IN

# Southwest

VISITOR'S GUIDE 2021

MANITOBA

**Manitoba**  
CANADA'S HEART  BEATS



**TOURISM**  
WESTMAN

Positivity  
always  
wins...  
Always.



Explore Brandon's rich culture, heritage, and history that our community was built upon.

[brandontourism.com](http://brandontourism.com)

**Brandon**  
brings you back.



WELCOME TO  
**Southwest**

MANITOBA

*A prairie escape*

*Southwest Manitoba*  
© @caley.brown.photography

**Imagine a land as rich in heritage as it is in wheat. A land where the horizon stretches on seemingly forever, where the sky is vast and blue, and where every sunset is an occasion to remember.**

Southwestern Manitoba remains today, as it has been for thousands of years, an inviting and abundant land, full of promise and prosperity. It was the promise of the land which drew the Native inhabitants hunting bison, the first explorers like La Verendrye, and later the fur traders and coureurs de bois. Come and explore, and you will be drawn in too.

From Riding Mountain in the North to Turtle Mountain in the South, from fields of wheat to fresh water lakes, valleys, vistas and unique desert-like ecosystems; no matter where you go, you'll find that Southwestern Manitoba is a land known for its hospitality.

# TABLE of CONTENTS

## 04 OUR COMMUNITIES

HIT THE ROAD

## 06 STAR ATTRACTIONS

BE SURE TO SEE OUR STARS

## 10 ROADSIDE ATTRACTIONS

WE'RE LARGER THAN LIFE

## 14 INDIGENOUS TOURISM

THEIR STORY LIVES ON ...

## 18 HERITAGE SITES

HISTORY HAPPENED HERE

## 22 MUSEUMS

A SNAPSHOT IN TIME

## 28 ART GALLERIES

THE ART SCENE SIZZLES IN THE SOUTHWEST

## 32 FARMERS MARKETS

FRESH FROM THE FARM

## 34 DINING & SHOPPING

DIVERSE EATS & UNIQUE BUYS

## 42 NATIONAL / PROVINCIAL PARKS

AT PEACE IN THE GREAT OUTDOORS

## 46 GOLFING

DON'T FORGET YOUR CLUBS

## 52 FAMILY TIME

CREATE LASTING MEMORIES

## 58 CAMPGROUNDS

GETTING AWAY FROM IT ALL

## 64 EXPLORATION

CHART YOUR OWN ADVENTURE

## 70 LAKES AND BEACHES

MAKING A SPLASH OR SOAKING UP THE SUN

## 76 WINTER FUN

GO PLAY IN THE SNOW

## 80 ACCOMMODATIONS

MORE THAN A PLACE TO REST YOUR HEAD

## 86 FISHING

REEL IN A TROPHY CATCH



### IMPORTANT COVID-19 DISCLAIMER

*While Tourism Westman strongly recommends that all tourism businesses adhere to the operating protocols and capacity restrictions allowed by the Manitoba government, we cannot guarantee the compliance of any business or attraction featured in the content above. Please contact the business directly for operating hours and policies. Throughout the province, please continue to practice safe physical distancing and adhere to all recommended guidelines.*



Main: Brandon, Manitoba @ozkarvagando

Manitoba's Southwest Year-Round Travel Guide is brought to you by

### TOURISM WESTMAN

D-217 10th Street  
Brandon, Manitoba R7A 4E9  
Telephone: (204) 726-1513  
Fax: (204) 727-5832  
Toll-Free: 1-888-303-2232  
E-mail: [info@tourismwestman.ca](mailto:info@tourismwestman.ca)  
Website: [www.tourismwestman.ca](http://www.tourismwestman.ca)

### DESIGN

**Tom Powell Design**

### EDITORIAL

**Vern May**

### PRINTING

**Leech Printing**

### ADMINISTRATION

**Michelle Frechette**

© Tourism Westman. All rights reserved. No portion of this publication may be reproduced, in whole or in part, without the express written permission of the publisher. The publisher makes no warranties for the products or services advertised in Manitoba's Southwest Travel Guide, and appearance of said ads should not be considered an endorsement. The publisher and Tourism Westman will not be responsible for injury, loss or damages which result from readers' participation in any event or activity featured in this publication. Information in this guide is taken from a number of sources, believed to be correct at the time of publication; however, a business or organization may change or cease operations, and events listed in the guide may be cancelled or rescheduled. Users of the guide are encouraged to make full use of the contacts provided in order to verify information.

Members of Tourism Westman  
welcome you to Southwestern Manitoba



**TOURISM  
WESTMAN**



**Manitoba**  
CANADA'S HEART BEATS

Working with Westman through tourism  
and business development

Follow us on:

 #tourismwestman #explorewestman



Tourism Westman



Tourism Westman

## BOUNDARY TRAIL

### BOISSEVAIN

- boissevain.ca
- 204-534-2433

### CARTWRIGHT-ROBLIN MUNICIPALITY

- cartwrightroblin.ca
- 204-529-2307

### DELORAINE

- delowin.ca
- 204-747-2572

### KILLARNEY

- killarney.ca
- 204-523-7247

### MELITA

- melitamb.ca
- 204-522-3413

### RM OF LOUISE

- louisemb.com
- 204-873-2591

### WASKADA

- waskada.org
- 204-673-2401

## RED COAT TRAIL

### BALDUR

- townofbaldur.ca
- 204-535-2176

### GLENBORO

- glenboro.com
- 204-827-2575

### HARTNEY & MUNICIPALITY OF GRASSLAND

- grasslandmunicipality.ca
- 204-858-2536

### RESTON

- rmofpipestone.com
- 204-877-3327

### RM OF PRAIRIE LAKES

- rmofprairielakes.ca
- 204-537-2241

### SOURIS

- sourismanitoba.com
- 204-741-0631

### WAWANESA

- oakland-wawanesa.ca
- 204-824-2666

## TRANS CANADA HIGHWAY

### AUSTIN

- austinmanitoba.com
- 204-872-3815

### CARBERRY & THE RM OF NORTH CYPRESS-LANGFORD

- townofcarberrycypress-langford.ca
- 204-834-6600

### ELKHORN

- elkhorn.mb.ca
- 204-845-2161

### HAMIOTA

- hamiota.com
- 204-764-3050

### MACGREGOR

- northnorfolk.ca
- 204-685-2211

### MINIOTA

- myprairieview.ca
- 204-567-3683

### OAK LAKE

- rmofsifton.com
- 204-855-2423

### RAPID CITY

- rapidcitymb.ca
- 204-826-2515

### RIVERS

- riversdaly.ca
- 204-328-5300

### RM OF OAKVIEW

- rmfoakview.ca
- 204-566-2146

### VIRDEN

- virden.ca
- 204-748-2440

## YELLOWHEAD HIGHWAY

### BIRTLE

- myprairieview.ca
- 204-842-3403

### GLADSTONE

- westlake-gladstone.ca
- 204-385-2332

### MINNEDOSA

- discoverminnedosa.ca
- 204-867-2727

### NEEPAWA

- neepawa.ca
- 204-476-7600

### RM OF YELLOWHEAD

- yellowheadmunicipality.ca
- 204-759-2565

### SANDY LAKE

- sandylakemanitoba.com
- 204-585-2519

## CITY OF BRANDON

### BRANDON

- brandontourism.com
- 204-729-2141

# HIT *the* ROAD



**Discover our vibrant communities!**

*For a more detailed look at our communities, view the map of Manitoba's Southwest on the inside back cover.*



*Be sure to SEE*  
**OUR STARS**

In rural Manitoba, we don't customarily toot our own horn, but being home to these outstanding venues, we are proud to lay claim to 12 of the Province's 63 Star Attractions. Offering a unique and iconic experience for visitors, you don't want to miss these destinations during your stay.

**The Commonwealth Air Training Plan Museum** is the only museum in Canada dedicated entirely to the airmen who trained and fought for the Commonwealth during World War II. Showcasing aircraft, artifacts and memorabilia from the time period, it's easy to see why this site has been named one of only six designated Signature Museums in the Province. Situated next door to the Brandon Regional airport, many of the site's original buildings serve as the backdrop for a snapshot in our military history.

Straddling the Canadian-U.S. border between the towns of Boissevain, Manitoba and Dunseith, North Dakota, the **International Peace Garden** offers 25 acres of scenic outdoors and botanical artistry. Offering trails for walking and biking, the garden also offers an onsite café, seasonal camping and plays host to a number of sport and music camps each year. Situated in a unique location, between recognized border crossings, it welcomes guests from both sides of the 49th parallel.

Fans of Canadian fiction may be familiar with the fabled community of "Manawaka" as featured in the writing of novelist Margaret Laurence. Her work is commonly believed to be based on her hometown of Neepawa where she spent her childhood. **The Margaret Laurence Home** is now a designated heritage site and features a wealth of original furnishings as well as artifacts which celebrate the writer's career.

Featuring more than 20 giant historical murals, Boissevain's **Outdoor Art Gallery** has been a source of pride for the community for many years. Brochures are available to allow visitors to embark on a self-guided tour of this growing public art collection and celebrate the area's history and culture in vivid, life-like detail.

*Riverbank Discovery Centre, Brandon*





Commonwealth Air Training Plan Museum, Brandon @catpmuseum

You may want to start your visit to the Brandon area with a stop at the city's **Riverbank Discovery Centre**. A year-round visitor information depot, the site offers local and regional travel information as well as a variety of indoor displays and outdoor recreation space. The Centre serves as a starting point for the extensive Assiniboine Riverbank trail network and regularly hosts special events throughout the year.

Canada's award winning **Royal Canadian Artillery Museum** tells the story of Canadian and Manitoba military history from colonial times to the present in a 24,000 square foot air-conditioned setting. With regular changes of the interior exhibits, the museum is also home to outdoor artillery displays. The RCA Museum is located in Shilo, and open year round to accommodate individuals and groups.

The iconic attraction in Souris is the famous **Souris Swinging Bridge**. First constructed in 1904, the span holds the distinction as Canada's longest suspension bridge, measuring 604 feet (184 metres). Last re-constructed in 2013, the latest evolution of the bridge still features elements of its predecessors, though has been emboldened to carry up to 1,000 persons at a time.

One wouldn't expect to find a desert on the Canadian prairies, but that's just one feature of **Spruce Woods Provincial Park** that awaits visitors. Providing a habitat for such rare species as the western plains hognose snake and the northern prairie skink, the park offers a beach and camping in the summer,

as well as an excellent venue for cross country skiing and snowmobiling in the winter. The park is situated between the communities of Carberry and Glenboro.

For a taste of the exotic, the **Westman Reptile Gardens** offers an up close and interactive experience with a wide array of reptiles, amphibians, arachnids and bugs. With a menagerie of animals including alligators, crocodiles, giant pythons, cobras, rattlesnakes and more, visitors are treated to a fun and educational introduction to many animal species. Expect the unexpected when you visit the gardens in Douglas, Manitoba.

After years of success in the food and beverage industry, Chris and Lawrence Warwaruk combined their farming experience with their service industry savvy and launched Farmery beer. Using natural, homegrown ingredients, they created a beer that encompasses the taste of the prairies and built North America's first estate brewery, **Farmery Estate Brewery** on their family farm near Neepawa. Visitors can see first-hand how the ingredients are grown and how the product is made from start to finish!

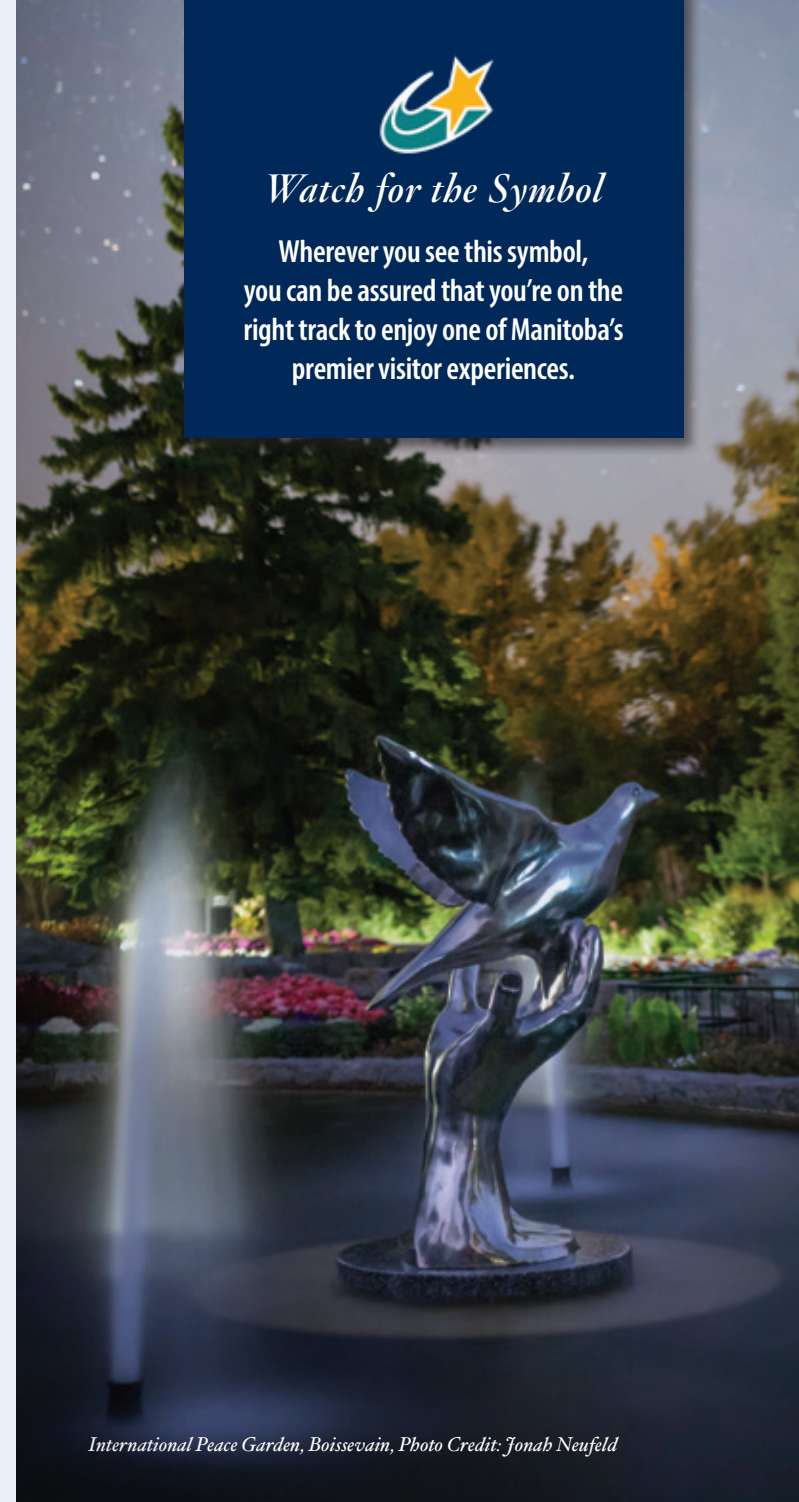
The **Manitoba Agricultural Museum** in Austin holds the largest collection of vintage farm machinery in Canada with more than 500 implements, most dating back to the Pioneer era of Manitoba. The Homesteaders' Village represents village life in the late 19th century with an 1883 schoolhouse, a post office that once served all of northwestern Manitoba, the typical log houses of the era, an elegant clapboard mansion, a general store, a railway station, and more! The Manitoba Agricultural Museum's annual festival, the Manitoba Threshermen's Reunion and Stampede, runs in late July featuring vintage farm machinery in action, daily machinery parade, children's activities, pioneer fashion show, music and more.

Visit **Sandhills Casino** near Carberry and you'll soon find out why it is an award-winning casino! With over 300 slot machines, Blackjack, Double Deck Blackjack, Roulette, and Live Poker for you to experience; their customer service is what sets them apart. Relish in the best dining experience in the area on site at Dunes restaurant, featuring themed buffet nights. Relax and enjoy yourself at Oasis Lounge; the perfect spot to relax with friends, catch a game on one of the big screens, or listen to free live music on weekends.



### Watch for the Symbol

Wherever you see this symbol, you can be assured that you're on the right track to enjoy one of Manitoba's premier visitor experiences.



International Peace Garden, Boissevain, Photo Credit: Jonab Neufeld



www.peacegarden.com  
Open Year-Round





**HAPPY ROCK**

We're  
**LARGER**  
than life

The prairies are often characterized as wide open spaces where you can see for miles and miles. So you can imagine the surprise that many visitors experience when they happen upon one of Southwestern Manitoba's five towering roadside attractions along their journey. Each bearing their own significance to their home community as well as the surrounding region, **these monuments have served to become the ever-lasting symbols of each town and are enjoyed by visitors from near and far every year.**



*Sara the Camel, Glenboro*

Once famous as the host site of an annual turtle derby race weekend, the town of Boissevain erected the 8 metre (28 foot) painted turtle monument in 1974 as a tribute to the activity which best identified their community. Though the derby was discontinued in 2001, **Tommy Turtle** remains as a symbol of friendship among neighbouring nations that share the landscape of the adjacent turtle mountains.

The huge snow goose sculpture in the town of Dunrea recognizes the community's relationship to the annual migration of geese across North America. **Cabrea the Snow Goose** turns to face north during the spring migration of birds to the area and faces south during the outbound migration of these seasonal fowl in the fall.

Standing along the roadside on Highway #16, **Happy Rock** greets visitors to the town of Gladstone. Since 1993, the community's mascot has stood atop the town's seasonal visitor information centre. Standing 11 metres (36 feet) high and tipping the scales at an estimated 3,000 pounds, the smiling face that visitors associate with Gladstone has even been immortalized on a postage stamp.

Glenboro's most obvious attraction, **Sara the Camel** stands 7 meters (23 feet) high and is emblematic of the area's Spirit Sands, commonly referred to as the Manitoba desert. Sara has become widely recognized as a symbol of the Glenboro community and Spruce Woods Provincial Park. You can find Sara at the junction of Highway #2 and Cochrane Street.

Located at the corner of Highway #83 and Front Street, this smiling 10 metre (33 foot), 6500 pound banana welcomes you to the "Banana Belt" in Melita. **Sunny the Banana** holds **Breezy the Blue Jay** in his hand and sports a t-shirt that reads "IBA" or "Important Birding Area" in observance of the area's reputation as a birder's paradise.



*Cabrea The Snow Goose, Dunrea*





Souris  
MANITOBA



Home to Canada's longest swinging suspension bridge

- Explore • Camp • Shop • Golf • Play • Relax •

We welcome you to Souris! Just 35 minutes from Brandon, this beautiful town will charm you with the peacocks and vistas. Explore our museums, walk on the swinging bridge, discover our shops, get a permit and go searching for agate, enjoy delicious meals, take in a round of golf, splash around in our outdoor pool, or enjoy the tranquility of Victoria Park.

~ Come for a visit, stay for the lifestyle ~

[www.SourisManitoba.com](http://www.SourisManitoba.com)

explore  
**BOISSEVAIN**

- Outdoor Art Gallery *a Manitoba Star Attraction*
- Communities in Bloom Grand Champion
- Only 45 minutes south of Brandon  
*Gateway to Turtle Mountain Provincial Park and International Peace Garden*

phone 204-534-6303 toll free 1-800-497-2393  
[www.BOISSEVAIN.ca](http://www.BOISSEVAIN.ca) email [tmcdc@boissevain.ca](mailto:tmcdc@boissevain.ca)

MUNICIPALITY OF  
**OAKLAND  
WAWANESA**  
EST. 2015

Phone (204) 824-2666  
[adminassist@oakland-wawanesa.ca](mailto:adminassist@oakland-wawanesa.ca)  
[www.oakland-wawanesa.ca](http://www.oakland-wawanesa.ca)

# Their story LIVES ON...



**HISTORIAL WALKING TOURS OF VIRDEN**  
OIL CAPITAL OF MANITOBA

Cost: **\$10** for Adults,  
**\$7** for Children, Teens & Seniors  
Duration: 2 Hours Min.  
Where: Meet at the  
CPR Historic Centre  
Needed: Water, Hat, Good Shoes  
When: Morning, Afternoon,  
& Evening  
~ Bike Tours Also Available ~

**FACTUAL INFORMATION  
WITH HUMOUR & EXERCISE**

**TO BOOK, CALL KEL SMITH  
204.748.3321**  
Get To Know Virden Up Close... Tour With Kel

Take a moment, standing in the wide open of the Manitoba prairie and imagine life here before the roads and rail carved a path across the plains to connect an emerging Province and country. A period of time when the livelihood of families was integrally connected to the land, water and wildlife nourished their bodies as well as their souls. This rich history can still be discovered when one takes the time to seek it out. Experience the Indigenous heritage of these traditional lands shared by the Dakota and Ojibway and the home of the Métis community.

On the corner of Broadway and South Railway Street in Boissevain, you will find a **Manitoba Heritage Council Plaque** in Commemoration of **Manitoba's first explorers**; Aboriginal people who entered the region from the south over 11,000 years ago. At that time, only a small portion of the province was accessible, as most of it was covered by an ice sheet or glacial lakes. These first people hunted now-extinct species of Ice Age animals and manufactured a distinctive style of stone spear point. The scarcity of such artifacts indicates that the earliest explorers were members of a small, highly mobile population whose territory included present-day southern Manitoba and Saskatchewan.

Re-discovered in 1992, the **Wakpa Tanka Look Out** near Mimiota offers a rare opportunity to see a single component Indigenous campsite historically used by the Sioux First Nation. It is believed that this was the winter home to the First Nation, allowing them to take advantage of the river and access to food and resources to survive the harsh climate. This site, accessed by the Silver Bend trail is believed to be the only one of its kind in Canada. Guided tours can be booked by calling 204-567-3757 or e-mailing [cdc@myprairieview.ca](mailto:cdc@myprairieview.ca).

Hundreds of years ago, bison herds were plentiful across the prairies, and were critical to the survival of the people. It wasn't just for the meat that the animal would provide, but also the animal hides for clothing and shelter and nothing was left to waste when managing this precious resource. Hunting for these animals in the era before firearms were introduced to North America required strategy, stealth and the use of the area's geography to subdue their prey. One of these sites remains just north of Cartwright. The **Clay Banks Bison Jump** is a self-guided site featuring interpretive signage helping visitors to visualize the techniques used to hunt during this era.

When visiting Brandon, you may find yourself wondering about the tipis you find about the City. The **Tipi Tours Legacy Project** features seven large structures (*with more to come*) decorated with the four colours of the traditional medicine wheel. These each serve as a reminder of the relationship that we each have with ourselves. Originated in 2017, each tipi incorporates a different teaching that is relevant to the site where it stands. The project connects Brandon residents to the area's history as well as creates a unique visitor experience for guests to the city.

# Deloraine Winchester



## FEATURES

- ✓ Campground
- ✓ Golf Course
- ✓ Points of Historic Interest
- ✓ Skating arena
- ✓ Modern Community Centre
- ✓ Fishing
- ✓ Swimming Pool
- ✓ Flags of the World
- ✓ Curling arena
- ✓ Lake Motigoshe

A PLACE FOR ALL SEASONS



A COMMUNITY THAT LOVES COMPANY

204 747 3668

WWW.DELOWIN.CA

RECOTOURISM@DELOWIN.CA



# Town of Carberry & Municipality of North Cypress-Langford

Family • Friends • Home



**Sandhills Golf & Country Club** - Tee off with us! Located just south of Carberry in the RM of North Cypress-Langford, our lush and challenging nine-hole golf course awaits you. Full service clubhouse and cart rentals available.



**Sprucewoods Provincial Park** - Just a few minutes south of Carberry on Highway #5 lies beautiful Sprucewoods Provincial Park. Camp, hike the ever-shifting sand dunes, or simply enjoy a picnic at the beach.

**Carberry Agricultural Society Fair & Races** - Who doesn't love an old-time country fair? Food, games, midway, livestock competitions and a ranch rodeo are sure to entice the whole family. Join us the first weekend in July!

**Carberry's Recreation Centre** - Splash in the crystal waters of our leisure pool! Featuring a waterslide, swimming lessons and kiddy pool - affordable family fun all summer long.

**Explore our History** - Visit the Carberry Plains Museum and its vast collection of war memorabilia, early homesteader artifacts, and sports memorabilia. Celebrate the life and times of our many former famous residents who made the Carberry Plains area what it is today.

For the architectural enthusiast, our Gingerbread house, with its truly unique architectural style and breath-taking gardens, is now open!

**The Seton Centre** - Follow famed naturalist Ernest Thompson Seton's shadowy footsteps through the Carberry Sandhills.

### Historic Downtown Carberry -

Visit our living history and the collection of century-old buildings in Manitoba's first designated heritage district. We welcome you!

### North Cypress-Langford Recreation Trails -

Take a hike or ride a bike. The trails are open anytime you want to hike, bike, read, sketch, think or take a unique picture. The trails have various lengths and a variety of terrain.

Phone: 204-834-6616 Fax: 204-834-6604  
E-mail: [edo@townofcarberry.ca](mailto:edo@townofcarberry.ca)

[www.townofcarberry.ca](http://www.townofcarberry.ca)



# HISTORY *happened here*



Schneider House, Virden.

Across the prairies of Southwestern Manitoba, visitors have the opportunity to re-trace the steps of some of the region's first pioneers and, if only for a moment, to share the view that was enjoyed by our ancestors. Our region is home to a number of heritage sites – Municipal, Provincial and National, which each pay homage to a distinct portion of history and our area's role in that time period.



Gingerbread House, Carberry.

Located across from the Veteran Park Rest stop in Baldur, the **Argyle Museum** holds distinction as a municipal heritage site. Celebrating the pioneering efforts of local doctors and dentists, medical devices dating back more than a century are on display for visitors. The museum also pays tribute to the Icelandic heritage of the area and celebrates Tommy Johnson, a local hockey player whose career included time in the National Hockey League.

Visitors can walk the trenches and experience the challenges of soldiers from the First World War at Carberry's **Camp Hughes**. Manitoba's only National Historic site dedicated to the 'Great War' offers self-guided tours of the training trenches that prepared Canadian troops for battle. The Friends of Camp Hughes hosts an annual Heritage Day at the site.

Constructed in 1900, Virden is home to the **C.P. Station**, a historic railway depot which is recognized as one of a kind due to its bell-cast gabled hip roof and chateaux style architecture. Restored and renovated to house the local arts council office, gift shop and art gallery, the station pays homage to the region's railway history which was instrumental in the growth of the prairies.

In Deloraine, the **Prairie Skills Inc.** community resource centre not only assists area residents with their future, but the building itself also serves to celebrate the town's past. The 1896 historic fieldstone building stands as a monument of the prairie settlers' faith, determination and resourcefulness. The building is still used daily by area citizens, a testament to the durability of its original design and construction.

Recognized as the largest piece of unbroken prairie between the Turtle Mountains and the Souris River, the 25.1 acre **Low Family Natural Heritage Area** southeast of Waskada is open year round and offers an authentic, undisturbed representation of the prairie landscape. Visitors can experience the prairies just as the original First Nations residents and European settlers would have more than a century ago.

One room school houses were common on the western plains during the earliest days of settlement in the west and the **River Valley Historical Site** at Virden pays tribute to that history

with an original 1896 school, equipped with original furnishings. Open by appointment only, the adjacent grounds also feature picnic areas and campsites.

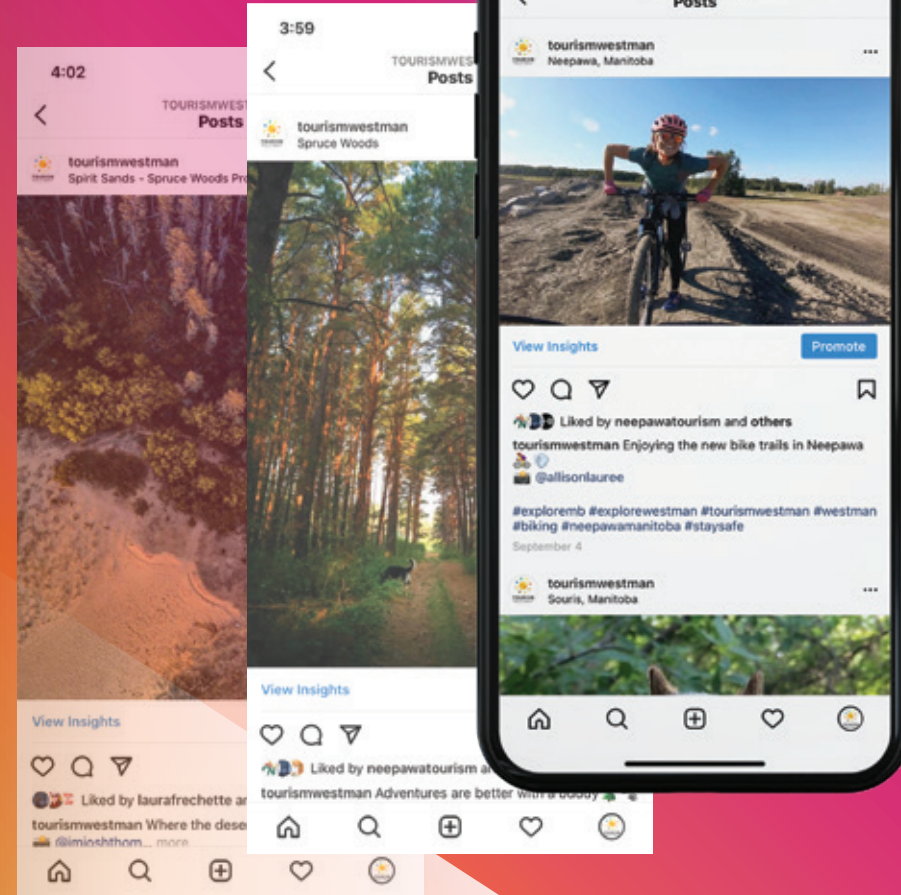
Moved by road on a metal skid from its original location to the center of Mather as a commemorative marker, **The Rock** was balanced on the skid with railway ties and due to the friction of the road and skid that the heat created was enough to ignite the railway ties during the move. Visitors can check out the display of the rail line which was abandoned in July 2008.

The history of power machinery is celebrated at the **Turtle Mountain Flywheel Historic Village** in Killarney. As many as one hundred engines are on display, ranging from a one horsepower unit to a Ruston-Hornsby diesel that powered the community's first Pool elevator. Open from spring to fall, the museum features a number of operational machines in its collection.



Steel Trestle  
Railway  
Bridge,  
Beulah

*Explore the  
diversity  
of our rich  
heritage.*



## SHARE YOUR ADVENTURE WITH US!

As you explore the southwest region of Manitoba, snap a selfie with your favourite Manitoba icon or capture a serene Manitoba moment, then share it with us on Instagram. We'd love to see and hear all about your discoveries.

*Tag Us!*

**@tourismwestman**  
**#tourismwestman**  
**#explorewestman**



# A SNAPSHOT *in time*

Carberry  
Plains  
Museum



Southwestern Manitoba is home to some of the most eclectic collections of our prairie past as featured in a number of museums throughout the region. Preserving the story of our journey from European settlement and rough life on the western frontier and the chapters of our lives since, **our museums maintain an important duty to ensure that our history is never forgotten.** We are also home to sites which celebrate the history and evolution of agriculture, automobiles, the railroad, regional policing, as well as our region's unique wildlife.

Manitoba  
Antique  
Automobile  
Museum,  
Elkhorn

A celebration of culture and bird habitat on the prairies highlights a visit to the **Antler River Historical Museum** in Melita. Situated in one of the community's oldest buildings, the 1893 structure includes a vast collection of First Nations artifacts, a display featuring 325 mounted birds and displays which represent life at the start of the 20th century in Southwestern Manitoba. Open by appointment only, guests are encouraged to call to arrange a visit.

Standing like a castle along the shores of the Souris River, the **Hillcrest Museum** holds designation as one of Canada's most important historical properties. Originally built as a family home for a founding clan in the region, the home was converted to a museum in 1967. Open each summer for July and August, and situated right next to the Souris Swinging Bridge, Hillcrest Museum is a must-see destination for visitors to Souris.

A magnificent display of wildlife including grizzly and polar bears are yours to examine at the Irvin Goodon International **Wildlife Museum** in Boissevain. Located just steps away from the community's iconic Tommy Turtle monument, the museum celebrates animal species from around the world displayed against a backdrop which re-creates their natural habitat. An ample gift shop and interactive displays for the youngsters are also a part of this museum which is open seasonally from May to September.

Canada's largest collection of operational vintage farm machinery has been attracting visitors to Austin's **Manitoba Agricultural Museum**. More than 500 implements and vehicles dating back to the 1880's are featured and a 20 building homesteaders village helps to give guests a look at life on the prairies for those who first took up farming here more than a century ago.

More than 100 automobiles from the turn of the century up to the 1970's are on display at the **Manitoba Antique Automobile Museum** in Elkhorn. This site also features an extensive agricultural display including steam engines and

pioneering farm implements, a Robert Clarke Indian artifact collection and many other curiosities. The museum is open seasonally from May to September.

Shoal Lake is home to one of the longest serving police detachments in Canada and hosts Manitoba's official museum honoring the Northwest Mounted Police. Built in 1984, the **Shoal Lake Mounted Police Museum** has been fashioned as a replica of the police barracks established here more than a century earlier. Open during July and August, it celebrates the roots of community police services on the prairies.

Brandon's **Daly House Museum** was introduced to the community as the home of the city's first Mayor. The home features many period pieces from the 19th century as well as an immaculate Victorian Garden. Unique displays in this collection include a turn of the century grocery store and the Magnacca Research Centre. This municipally designated historic site is open for visitors year round.

*For more information, view the full list of museums that are awaiting your visit this summer in Southwestern Manitoba at [www.tourismwestman.ca](http://www.tourismwestman.ca)*



Visit the childhood home of one of Manitoba's most celebrated and beloved authors.  
204.476.3612  
312 1<sup>ST</sup> AVE  
NEEPAWA



## Waskada Park

Unique 6 Hole Golf Course  
12 site campground with shower facilities  
Children's play structure  
Picnic & Camping  
Phone: (204) 673-2401



Hamiota Pioneer Club Museum

## GO ABOVE AND BEYOND!

At The Commonwealth Air Training Plan Museum  
A NATIONAL HISTORIC SITE

UN SITE HISTORIQUE NATIONAL  
Au Musée de la Formation Aérienne du Commonwealth

## AU-DESSUS DE LA MÊLÉE!



Brandon Municipal Airport 204.727.2444  
Aéroport municipal de Brandon 204.727.2444  
[www.airmuseum.ca](http://www.airmuseum.ca)

## EXPERIENCE HISTORY WITH A BANG!

At the RCA Museum  
CANADA'S NATIONAL ARTILLERY MUSEUM  
LE MUSÉE NATIONAL DE L'ARTILLERIE DU CANADA  
Au Musée de L'ARC

## FAITES DE L'HISTOIRE AVEC UN BANG!



CFB Shilo 204.765.3000 ext. 3570  
BFC Shilo 204.765.3000 poste 3570  
[www.rcamuseum.com](http://www.rcamuseum.com)

Visit Manitoba's star attraction Military Museums.  
Visitez les Attractions Étoiles des Musées Militaires au Manitoba.



## MANITOBA AGRICULTURAL MUSEUM



"HOME OF BIG ROY"

AUSTIN, MANITOBA

*Homesteaders' Village  
Vintage Farm Machinery  
Manitoba Threshermen's Reunion & Stampede  
Three Creeks Campground  
Winter Wonderland  
And more!*

3 KMS SOUTH OF AUSTIN ON HWY. #34  
[MbAgMuseum.ca](http://MbAgMuseum.ca)



**HERITAGE CO-OP**  
 Minnedosa • Brandon • Wawanesa  
 Erickson • Sandy Lake • Strathclair • Rivers

**VALLEYVIEW CO-OP**  
 Kenton • Melita • Oak Lake • Oak River  
 Pierson • Reston • Virden

**Gas Bars**  
**Food Stores**  
**Home Centres**  
**Full Service Ag Sites**  
**24-Hour Cardlock**  
**Bulk Petroleum**

**DOWNLOAD THE CO-OP APP**  
 Weekly flyers, coupons, special offers  
 and directions to the nearest Co-op



[coopapp.ca](http://coopapp.ca)

## MUSEUM LISTING

### Austin

- Manitoba Agricultural Museum  
204-637-2354
- Manitoba Amateur Radio Museum  
204-330-0772

### Baldur

- Argyle Museum  
204-535-2327

### Belmont

- Belmont & District Museum  
204-537-2574
- Evergreen Firearms Museum  
204-537-2647

### Birtle

- Birdtail Country Museum  
204-842-3363

### Boissevain

- Beckoning Hills Museum  
204-534-6813
- Chokecherry Junction  
204-534-3797
- Irvin Goodon International Wildlife Museum  
204-534-6662
- Kentner's Great Northern Railway Museum  
204-534-2395
- North American Game Warden Museum  
204-534-2510
- The Moncur Gallery  
204-534-6689

### Brandon

- Brandon General Museum & Archives  
204-717-1415
- Carousels and Dolls Doll Museum  
204-728-1245
- Commonwealth Air Training Plan Museum  
204-727-2444
- Daly House Museum  
204-727-1722

- 26th Field Regiment RCA/XII Manitoba Dragoons Museum  
204-728-2559

### Carberry

- Carberry Plains Museum  
204-834-2668
- The Seton Centre  
204-834-2509

### Cartwright

- Blacksmith Museum  
204-529-2363
- Heritage Park Museums  
204-529-2363

### Crystal City

- Crystal City Printing Museum  
204-873-2095

### Elgin

- Elgin & District Historical Museum  
204-873-2095

### Elkhorn

- Manitoba Automobile Museum  
204-845-2161

### Foxwarren

- Foxwarren Museum  
204-847-2080

### Gladstone

- Gladstone and District Museum  
204-385-2551

### Glenboro

- Burrough Of The Gleann Museum and Archives  
204-827-2105

### Hamiota

- Hamiota Pioneer Club Museum  
204-764-2552

### Hartney

- Hart-Cam Museum  
204-858-2590

### Isabella

- Isabella Museum  
204-568-4573

### Killarney

- J.A.V. David Museum  
204-523-7325
- Turtle Mountain Flywheel Club Museum  
204-523-4333

### Melita

- A.F. "Fred" Jensen Trophy Room  
204-522-3438
- Antler River Historical Museum  
204-522-3729

### Minnedosa

- Minnedosa Heritage Village & Museum  
204-867-3542  
204-867-3816 (off-season)

### Miniota

- Miniota Municipal Museum  
204-567-3690

### Neepawa

- Beautiful Plains Museum  
204-476-3896
- Margaret Laurence Home  
204-476-3612

### Oak Lake

- Oak Lake & District Museum  
204-855-2406

### Pilot Mound

- Marringhurst Heritage House  
204-825-2102
- The Manitoba WWI Museum  
204-825-2961
- Pilot Mount & District Museum  
204-825-7471

### Rapid City

- Rapid City Museum  
204-826-2732

### Reston

- Reston & District Museum  
204-877-3641

### Rivers

- Clack Family Heritage Museum  
204-328-5240
- Chapman Museum  
204-728-7396
- English Museum  
204-328-7176

### Sandy Lake

- Ukrainian Cultural Heritage Museum  
204-585-2636

### Shilo

- The RCA Museum  
204-765-3000

### Shoal Lake

- Prairie Mountain Regional Museum  
204-759-2245
- Shoal Lake Mounted Police Museum  
204-759-2826

### Souris

- Hillcrest Museum  
204-483-2008
- Souris Railway Museum  
204-483-2008
- The Plum Museum  
204-483-3643

### Strathclair

- Strathclair Museum  
204-720-0704

### Virden

- Currahee Military Museum  
204-748-1461
- Virden Pioneer Home Museum  
204-748-1659

### Waskada

- Waskada Museum  
204-637-2557

### Wawanesa

- Sipiweske Museum  
204-824-2289



Art Gallery of Southwestern  
Manitoba, Brandon, Photo  
Credit: Doug Derksen

# The ART SCENE SIZZLES *in the Southwest*

It may be generally considered that the hub of fine art would be nestled deep within the heart of a larger urban center, however that's not the case when you see the bountiful harvest of art that has found a home in Southwestern Manitoba. Far displaced from the black tie affairs of the big city, rural Manitoba is emerging as a Canadian art capital, with galleries opening in commercial districts and emerging artists are being developed right from the fertile soil that has nurtured our communities for generations.



**Art & Gifts**  
[dundeedesigns.ca](http://dundeedesigns.ca)  
866.752.9191 / Alexander, MB  
Just off the Transcanada



Hamiota Heritage Arts Museum Mural

The Art Gallery of Southwestern Manitoba in Brandon is a non-profit, public venue which offers contemporary art exhibits of regional, national and international significance. With an emphasis on Manitoba art, the gallery and gift shop features the wares of local artisans. The gallery hosts exhibits, school tours and art classes and is open throughout the year, located at 710 Rosser Avenue in the Town Centre building.

Originally built as the Union Bank in 1905, Hamiota has found a purpose for the distinguished century-old building by making it the home of the **Mid-West Arts Council**. The setting provides the perfect backdrop for various forms of art, serving as the only exhibition space in its district. "Tea at the Bank" is a weekly Thursday attraction from June to September each year which has been a popular event to engage local residents and visitors to experience the site.

Souris has seen an explosion of interest in art stemming from a series of oil painting classes offered by local artist Kathleen Lagasse. Within a year, the program had grown so popular that it led to the opening of a commercial art gallery on Crescent Avenue. **Lagasse's Studio of Fine Art** has continued to expand and evolve with the addition of new artists regularly. Classes and workshops are still a major part of the studio's programming which runs throughout the year.



ART GALLERY OF  
SOUTHWESTERN  
MANITOBA

CREATE  
IMAGINE  
EXPERIENCE  
CONNECT  
agsm.ca

CONTEMPORARY ART,  
EXHIBITIONS,  
EDUCATION,  
AND EVENTS

VISIT OUR GIFT SHOP  
FEATURING EXCLUSIVELY  
MANITOBAN ARTISTS  
AND ARTISANS

**FREE ADMISSION**

MON 4 - 9PM  
TUE, WED, FRI 10AM - 5PM  
THUR 10AM - 9PM  
SAT 12 - 5PM SUN CLOSED  
\* Closed all major holidays

ART  
CONNECTS

SATISFY YOUR CREATIVE CURIOSITY

The story is similar for the **Inspire Studio of Fine Art** in Minnedosa. Opened by Marlies Soltys in December 2015, Soltys was already established as a tile mosaic artist with commissioned pieces and home interior work in high demand throughout the region. Her gallery, featuring local artists in a variety of art disciplines, has become a “must see” destination for the community known as Manitoba’s Valley Paradise.

Virden is recognized as the Oil Capital of Manitoba, but with the volume of activity that takes place throughout the year at the community’s **Art Mosaic** space, it’s possible that the art community is growing competitive for top billing. The local arts council was formed in 1982, but since occupying space in the CPR Heritage Centre in the community, they have been better equipped to host exhibits and workshops which expose rural residents and visitors to art of all varieties.

The story behind the creation of Boissevain’s **1894 Art Centre** is one which is worth discovering. Founders Casey and Christina Guenther were originally just looking for a home in the community after travelling internationally when they discovered the opportunity that awaited to purchase the vacant legacy building. They renovated the upper floor as a residence and developed the main floor as an art gallery and venue for hosting exhibitions and classes in various art disciplines.

**The Glen P. Sutherland Gallery of Art** is a unique facility operated for and by the students in Brandon University’s Visual and Aboriginal Arts programs. Located at the southwest corner of the campus at BU, this important community resource produces exhibitions of students and staff open to the public between September and April.

The **Western Manitoba Centennial Auditorium** is Western Manitoba’s premier venue for the performing arts; hosting community productions and professional entertainers. Each year the WMCA presents professional ballet, symphony orchestra, professional musicians and comedians, community and high school theatre productions, and several cultural festivals.

The Killarney Turtle Mountain Arts Council (KTMAC) provides opportunities for Killarney citizens of all ages to enjoy and participate in the arts and cultural activities of our community. Through the **Heritage Home for the Arts**, Killarney’s community arts and culture centre, the Council is able to provide stimulating, thought-provoking and appealing exhibitions that showcase local and regional artists and that attract people from all over the province. The only such space in Killarney, the Heritage Home is a public amenity, a hub of activity and a gathering place for learning.

*These are just some of the fabulous venues for art in western Manitoba. If you are a connoisseur of the arts, there are a growing number of destinations in Southwestern Manitoba that you will want to experience. Whether as a passive observer, or if you want to roll up your sleeves and unleash your inner artist, you can experience it all in our region this year.*

1894 Art Centre, Boissevain

*Rural Manitoba is emerging as  
a Canadian art capital.*



Brandon  
Global  
Market,  
Photo  
Credit:  
Sandy  
Black

# FRESH from the FARM



Neebawa  
Farmers  
Market

At the heart of Southwestern Manitoba is our strong agricultural economy. Our fertile lands and wide open prairies continue to be a key to our success as a region. Nowhere is that more evident than at the region's many farmer's markets which offer **seasonal produce, home-baked family favourites produced from local ingredients and the handmade wares of local artisans.** We invite you to experience the farm fresh difference at these and other great community markets.

Started in 2011, **Brandon's Global Market** boasts a creative, open gathering space for all to enjoy in the heart of downtown. With vendors changing from week to week, you never know what you may find at this permanent outdoor market. Offering live music, delicious food, handmade treasures and opportunities for the community to buy and sell their wares, the market continues to grow in both size and popularity. The market welcomes vendors from all cultures, making it one of the most 'globally inclusive' markets of its kind in rural Manitoba.

Fridays from July to September bring people from miles around to the Romance on the Railway Park and the **Boissevain & Morton Farmer's Market.** This market offers twelve different meal specials sponsored by a different community organization for each week of the summer market and an engaging slate of live music throughout the season. Come for lunch and treat yourself to locally grown and crafted fare.

Treat yourself to a taste of valley life when you take in one of the two weekly events hosted by the **Minnedosa Farmer's Market.** Fridays from late June through to mid-September all of the action and home-grown goods can be found in the heart of downtown at the Covenant Church parking lot. On Sundays, guests are treated to a beachfront market on the basketball courts just steps away from Minnedosa beach. With new vendors always welcome, you can never be sure what you might find at these popular markets.

Under a canopy of shady trees in the town centre parking lot, identified by locals as the Whitfield Pharmacy lot, the **Souris Farmer's Market** greets visits on Saturday mornings from early July until late September. Home to an active community of artisans, you're sure to find some unique hand-crafted pieces in addition to local honey, jams, baked goods and fruits and vegetables.

Best known for their enormous onions, super sweet carrots and the freshest pickling cucumbers around, **Brown Sugar Produce** is a popular source for Manitoba grown vegetables through their seasonal stand outside the Lady of the Lake café in Brandon. With increased attention to food security and the quality of the food they produce, Brown Sugar takes a traditional approach to their crop management, using row cover to protect crops from pests instead of harmful pesticides and are presently striving for organic certification for their growing processes.

*Diverse* **EATS**  
& *Unique* **BUYS**



*Blarney Stone Pub & Restaurant, Killarney*

**DINE**  
WESTMAN

With selections that vary from hearty traditional cuisine to dishes which you might only expect to find at trendy bistros in the city, **Southwestern Manitoba is home to a diverse menu of dining options for even the most discerning palate,** and offers up some of the finest dishes you will find in the country.

*Most restaurants offering curbside pickup and/or delivery options. Please check with each individual business for more information.*



*Benny's Astoria Pizzeria, Shoal Lake*

**BRUNCH & LUNCH**

- Sawmill Tea & Coffee Company** . . . . . **Boissevain**  
*Varying menu daily, lots of delicious options for food, specialty drinks and tasty desserts! On-site Handcrafter's Gift Shop.*
- Komfort Kitchen** . . . . . **Brandon**  
*Comfort food at its finest – Breakfast, lunch and catering! Famous in Westman for its breakfast/brunch buffet offerings. Sidewalk patio in warmer months.*
- Lady of the Lake** . . . . . **Brandon**  
*Comfort gourmet lunch, gluten free, hot soups, fresh salads and high tea. Browse the one of a kind displays in the shop! Patio.*
- Farmhouse 50** . . . . . **Minnedosa**  
*Made from scratch local fare – for your morning coffee, lunch, or afternoon snack! Nice selection of Made in Manitoba products sold here. On site B&B. Patio.*
- Woodfire Deli** . . . . . **Souris**  
*A full service restaurant specializing in wood-fired pizzas, healthy lunch options and homemade gelato. Specialty grocery market and café.*
- Gopher Creek Coffee Social Gaming** . . . . . **Viriden**  
*In-house fresh baked goodies and sensational meals. Specialty drinks and large selection of board games, to play and for sale. Event nights.*



*Farmhouse 50, Minnedosa*

## CAFÉS & BAKERIES

**Blue Hills Bakery & Deli** .....Brandon  
Known for their tasty cinnamon buns and healthy lunch options – soups, salads and sandwiches!

**Chez Angela Bakery & Café** .....Brandon  
From scratch artisan breads, mouth-watering pastries and cakes! Specialty coffees, breakfast and lunch items, meal kits and subscriptions with a focus on local fresh ingredients.

**Forbidden Flavours** .....Brandon  
Specialty coffee shop and roastery; featuring a large selection of hot and cold beverages. Small daily menu of healthy snacks, treats and breakfast/lunch items.

**Gladstone Bakery** ..... Gladstone  
Great lunch spot; offering soups and sandwiches, friendly service and delicious baked goods. Try their cinnamon buns and long Johns – known for being some of the best in the area!

**Country Crocus Bakeshop & Tea Room** .....Hamiota  
Known for their award-winning donuts in Manitoba. Delicious pies, cookies, butter tarts and more!

**Honey House Bakery & Café, Rivers** ..... Rivers  
Tasty treats; often incorporating their own local honey. Breakfast and lunch items. Specialty Forbidden Flavours coffees. Also carry full range of Forbidden Flavours and Mann Apiaries products for sale.

**Minary Homestyle Bakery** .....Souris  
Large selection of baked goods; breads and buns, scones, croissants, apple fritters, custom cakes and more!

## SPECIALTY

**Farmery Estate Brewery** ..... Neepawa  
Privately owned brewery that offers tours and a large selection of alcoholic and non-alcoholic options for purchase. Farmery merchandise is also available for purchase; including clothing, body care and food items and glassware. On-site Farmery food truck in the warmer months.

**Boho Soul Kombucha** ..... Minnedosa  
A small indoor market to purchase in house fermented foods such as Kombucha, Sauerkraut, Kimchi, and so much more. As well as an eatery offering a small lunch menu to eat in or takeout, made fresh daily.

**Courtney's Cake Creations** .....Brandon  
Gorgeous custom cakes and cupcakes for any special occasion!

**Neo Bubble Tea** .....Brandon  
Bubble Tea shop offering a wide assortment of customizable drinks; including iced tea, milk tea, mousse tea, tea latte and smoothies with a nice selection of toppings.

**Crow's General Store** .....Brandon  
A must see! Unique vintage style ice cream parlor, offering a fun setting and large grounds filled with vintage goodies to explore. Exceptionally friendly owner and a fun outing for the family. Great photo ops for special events.

## PIZZA

**83 N' Main** ..... Birtle  
Specialty pizzas (including cauliflower crust), subs, burgers, soups, sandwiches and ice cream!

**Marino's** ..... Brandon  
Top-notch quality homemade pizza and pasta, salads, subs, pitas, desserts and more.

**Pizza Express** ..... Brandon  
Award-winning pizza four years running! Tasty salads, poutines, subs and lots more.

**Romana Pizza** ..... Brandon  
A Brandon tradition for over 40 years! Offering some of Brandon's best pizza, gyros, ribs and famous pizza parcels.

**Benny's Astoria Pizzeria** ..... Shoal Lake  
Tasty pizza, delicious chicken and drinks! Pool tables and patio.

## STEAK / SPECIAL OCCASION

**Albert's Bistro** ..... Brandon  
Fine authentic Greek cuisine. Try their famous prime rib, Greek delight or rack of lamb, done to perfection! Enclosed patio. Highland Games on-site, offering mini golf, rock climbing, basketball and driving range!

**Benny's Restaurant** ..... Brandon  
Warm atmosphere and amazing food; including mouth-watering steaks, fresh salads, decadent desserts and everything in between!

**T's Dining & Lounge** ..... Virden  
Prime steaks, seafood, pasta and more delicious fare set in a gorgeous historic building. Perfect spot for a lunch date or special occasion. Patio available in warmer months.

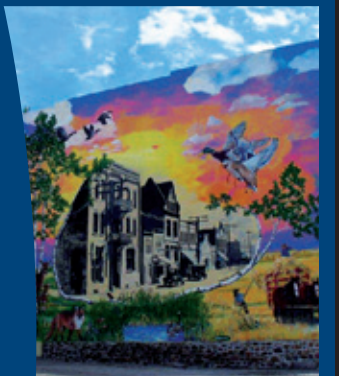


### Offers you a quality lifestyle in a rural setting

Enjoy your choice of lifestyle activities all year round in Hamiota. Whether it's curling or skating at the Hamiota & District Sports Complex, cross country skiing and snowshoeing along our groomed trails, or taking a refreshing swim in the outdoor heated leisure pool, we're sure you'll agree – we're worth the visit.

Summer visitors enjoy golfing, camping, hiking our nature trails and many community events! Our historic Heritage Arts Centre welcomes visitors year round to visit their art gallery. Local business members provide a wide variety of products and services at competitive rates.

Phone (204) 764-3050  
[www.hamiota.com](http://www.hamiota.com)



## INTERNATIONAL FLAVOURS

**Choy's Restaurant** ..... **Boissevain**  
*Welcoming family dining and Banquet room. Fantastic selection of fresh dishes. Menu and buffet options available.*

**Chilli Chutney** ..... **Brandon**  
*Popular Indian eatery with buffet at dinnertime and during lunch on weekdays, plus full menu of authentic Indian dishes.*

**Sabor Latino** ..... **Brandon**  
*Brandon's best authentic Latin American cuisine – try their wide selection of home-cooked dishes and great drinks for any occasion!*

**Sushi Hut** ..... **Brandon**  
*Offers some of the Best sushi in Westman all under one hut – Popular dishes include Yakitori, Pork Cutlet and the Canada Roll. All you can eat à la carte lunch and dinner options.*

**Shawarma Queen** ..... **Brandon**  
*Delicious Donair, authentic shawarma, falafel, chicken, steak, and lamb kebabs. Exceptional food and service!*

**Ukrainian Cuisine** ..... **Brandon**  
*True traditional Ukrainian and Latin cuisine. Great selection and friendly owners! Different weekly specials. Lots of vegetarian options available as well as frozen perogies for purchase.*

**Tana Ethiopian Cuisine** ..... **Brandon**  
*Authentic Ethiopian Cuisine that takes you on a direct flight to the heart of Africa! All you can eat feast with an awesome variety of their amazing food. Try the Lamb Tibs, Beef Cha Cha, and the Key Wat.*

**Lee's Village Restaurant** ..... **Neepawa**  
*Excellent lunch and dinner smorg and a great selection of fine Chinese food items on the menu.*

## PUB GRUB

**Joe Beeverz Bar & Grill** ..... **Brandon**  
*A truly Canadian Pub! Specializing in gourmet poutines, homemade burgers, awesome chicken wings, cold beer and incredible service.*

**The Dock on Princess** ..... **Brandon**  
*Hand-made menu featuring fresh, local ingredients! Try their hand battered fish and coconut onion rings, drool-worthy burgers or famous pickled Dock Caesars! Restaurant/ lounge options. Pool tables and patio. Great selection of meal and drink kits available.*

**Blarney Stone Pub & Restaurant** ..... **Killarney**  
*Restaurant and sports bar. Friendly service, delicious drinks and extensive menu with lots of varied options for breakfast, lunch and dinner!*

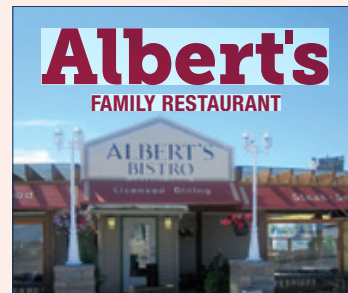
## STREET VENDORS

**The Batchery** ..... **Brandon**  
*Great variety of fresh-made gelato, sorbetto and ice cream made right in the truck!*

**Los Brothers Street Food** ..... **Brandon**  
*Mexican street food – try their tacos, burritos, quesadillas, tortilla soup and unique burgers!*

**Poutine King** ..... **Brandon**  
*Offers tons of poutine options including Big Cheesyburger, Kalbi BBQ and a Cowboy Poutine featuring Smoked and Sauced Pulled Pork.*

**Smoked & Sauced** ..... **Brandon**  
*Family run business, specializing in BBQ and smoked foods; including pulled pork, baby back ribs, mac and cheese, poutines, and deep fried pickles*



**Albert's**  
 FAMILY RESTAURANT

DINE-IN, PICK-UP OR DELIVERY!  
 Find us on the Dash App!

Greek Food \* Pizza \* Steak \* Prime Rib

HIGHLAND MINI GOLF  
 DRIVING RANGE  
 ROCK CLIMBING WALL  
 BASKETBALL

**NEW!** 24 HOUR DRIVE-THRU ATM  
 Located in front of Albert's on 18<sup>th</sup> St North

2000 Highland Ave, Brandon, MB  
 204.727.3911  
[www.albertsbistro.com](http://www.albertsbistro.com)



**GLADSTONE BAKERY & EATERY**

FRESH HOMEMADE GOODNESS!

5 MORRIS STREET  
 GLADSTONE, MB  
 204.385.2225

*Get Your Buns Here!*



Roll your windows down and check out one (or all) of these local favourite **DRIVE-INS!**

**1 BUSY B DRIVE-IN**  
 Boissevain

**2 TASTEE'S ICE CREAM & GRILL**  
 Brandon

**3 VELVET DIP ICE CREAM**  
 Brandon

**4 SUMMER SHACK DRIVE-INN**  
 Carberry

**5 WHAT'S THE SCOOP AT MCANDREW'S DRIVE-IN**  
 Hamiota

**6 THE BEACH HUT**  
 Killarney

**7 DARI ISLE DRIVE-IN**  
 Minnedosa

**8 THE DAIRY BAR**  
 Souris

**9 ICE CREAM ISLAND**  
 Virden



# SHOP WESTMAN

When your travels bring you to streets where the spirit of entrepreneurship still flourishes, you can expect to be wooed by local boutiques and one-of-a-kind shoppes which are home to gifts that you won't find anywhere else. Whether you're shopping for a loved one, or treating yourself to some local wares, Southwest Manitoba is home to some surprising shopping experiences that you'll want to share with others when you return home from your trip.



Farmery Brewery, Neepawa

Many stores are offering online orders and/or virtual shopping options for curbside pickup or delivery. Please check in with each individual business for more information.

## FASHION

**All Things Hanna** ..... **Rapid City**  
Gorgeous 2000 sq. ft. old renovated church featuring a gallery, where local artists are featured as well as a nice selection of stylish womenswear hand picked by Hanna, the owner. Complimentary coffee, tea and refreshment bar for shoppers.

**Shari Lyn Fashions** ..... **Virden**  
Expect to find a large selection of trendy brands such as Free People, Levis, Papillon, Matt & Nat, Joseph Ribkoff, Kut and more. Carries sizes ranging from XS – 3XL.

**Cinnamon Tree Boutique** ..... **Brandon**  
Cozy and friendly ladies' clothing boutique that carries a wide range of brands for any occasion and all of the essential accessories to complement any outfit!

**Bromley's Menswear** ..... **Brandon**  
Quality well-fitting men's garments. Full range of suits, dress shirts and ties as well as casual wear and accessories. On-site tailor.

**It's Time Fashions** ..... **Neepawa**  
Comfortable and stylish shopping atmosphere. Great selection of ladies' fashion and accessories, home goods, body care and more.

**Samantha's Boutique** ..... **Elkhorn**  
Offering a wide range of made-in-Manitoba products, including ladies' fashion and accessories, home décor, giftware, gourmet food, florals designed by an experienced on-site florist.

## GIFT SHOPS

**Flower Attic & Gifts** ..... **Virden**  
Full-service florist and gift wares shop, offering the finest floral arrangements and gourmet gift baskets for any occasion. Two floors filled with good; ranging from fun kitchenware to funky textiles.

**Lady of the Lake** ..... **Brandon**  
"Best Gift Shop in Canada" award-winning store. 5,000 square foot space filled to the brim with artful displays featuring trendy home stylings and furniture. Unique clothing items and personal accessories and countless other items!

**Farmhouse 50** ..... **Minnedosa**  
Part coffee house, part gift shop and all Manitoban; offering a plethora of products that are hand-made in the Province, many of which are even crafted in the Westman region!

**Ten Thousand Villages** ..... **Brandon**  
From beautiful hand-woven baskets, fair-trade coffee, unique children's toys and books, intricately detailed tapestries and more – Ten Thousand Villages offers a way for you to become part of the story and give gifts with meaning. Every purchase improves the lives of makers around the world by supporting their craft and providing a fair, stable income.

Samantha's Boutique, Elkhorn



artful  
**SHOPPING**  
lovely  
**LUNCHES**

**BRANDON • (204)725-4181**  
**LADYOFTHELAKE.CA**

## GOURMAND

**Farmery Estate Brewery** .. **Neepawa**  
Famous range of Farmery beers, t-shirts and hoodies, hats, winter accessories, culinary products (flapjack, chocolate cake and beer bread batter) featuring their malted barley; body care hemp oil-infused products, glassware, beer cozies and other goodies. Themed gift packs often available.

**Boho Soul Kombucha** . . . **Minnedosa**  
Small indoor market offering in-house small batch fermented food items such as Kombucha, Sauerkraut, Kimchi, and more. Subscription Ferment Boxes available.

**Two Farm Kids** ..... **Brandon**  
Wide range of natural specialty culinary products, as well natural body and personal care, household products, supplements, gift trays and more!

## SPECIALTY

**Toymasters** ..... **Brandon**  
Locally owned independent toy store that offers Brandon's biggest selection of LEGO, Playmobil, Calico Critters, Schleich, Melissa & Doug, puzzles and board games, crafts, Bruder, Science kits, HUGE selection of board games for all ages and more.

**Baby Bump** ..... **Brandon**  
One-stop-shop for first time parents (or any parents, really). Top quality strollers, car seats, baby clothing and accessories, teething and educational toys, nursing bras and other products that you won't find anywhere else in Westman! Also offer Prenatal and Me and Mini Me Yoga Fit Classes.

**Charlow** ..... **Brandon**  
High quality selection of dreamy signature Charleston & Harlow candles (made by owners) as well as Canadian-crafted home goods, accessories, cards, clothing and more.

**Union Shoe Store** ..... **Brandon**  
Large selection of high quality brand-name footwear, Smart Wool socks, leather mitts, purses as well as Pendleton blankets and towels.

**The Green Spot** ..... **Brandon**  
Plentiful selection of gorgeous and healthy plants, home decor, ladies and men's fashion and accessories, kitchen wares, gift ware, goodies (including Mordens chocolates) and much more!

## ART GALLERIES/ LOCAL WARES

**Dundee Designs** ..... **Alexander**  
Gorgeous custom woodwork, carvings, metalworks, painting, and jewelry as well as a creative line of clocks, lamps, and unique furniture pieces and more (many of which are designed and made by owners).

**Inspire Studio of Fine Arts** ..... **Minnedosa**  
Local art, home décor, fresh flower arrangements, leather goods, children's items, bath and beauty products, planters and 'Valley Life' Swag.

**Lagasse's Studio of Fine Arts** . . **Souris**  
Treasure trove of locally made goods, including home wares, clothing and accessories, jewelry, children's books and clothing, moccasins, leather purses, self-care products and of course; a gorgeous selection of Manitoba-made art!

**Art Gallery of Southwestern Manitoba**  
**Brandon**  
Non-profit, public venue. Gallery and gift shop features the wares of local Manitoba artisans; featuring one-of-a-kind items that are perfect for adding a personal touch to your space.

**Studio 83 Gallery & Gifts** . . . **Miniota**  
Carved wooden vases, handcrafted jewelry, sculptures, soft toys, home goods, local art and more.



*At peace in the*  
**GREAT  
OUTDOORS**

*Riding  
Mountain  
National Park*  
© @lilyamaria



*Top: Bald Hill, Riding Mountain  
National Park © @liz.tran  
Right: Turtle's Back, Turtle Mountain  
Provincial Park © @imjoshthom*



For many, nothing signals a prairie vacation quite like getting back to nature and with the wide assortment of National and Provincial parks rooted in our region, you're sure to answer the call of the wild during your visit.

Described as an island of wilderness surrounded by a sea of farmland, **Riding Mountain National Park** boasts 3,000 square kilometres of wilderness to be explored. The park is one of only five national parks to also be home to its own resort town site. Thousands of visitors flock to the park each year to take advantage of land and sea recreation on Clear Lake through hiking, horseback riding and of course, camping. Featuring more than 500 serviced and unserviced camp sites, a growing number of guests are experiencing the site's 30 oTENTik wood and canvas-framed structures that offer the rustic camping experience, with the comfort of home. Many native species call the park home including black bears, elk, moose, bison and lynx.

Most popular for its beach and as a destination for fishermen angling for pike, walleye and perch, **Rivers Provincial Park** is comprised of 38 hectares of mixed grass prairie. Situated on man-made Lake Wahtopanah, a native word meaning "canoe people", the park is a jewel of the town of Rivers, just a short drive northwest of Brandon.

Straddling the international boundary with the United States, the **Turtle Mountain Provincial Park** features a vast deciduous forest and more than 200 lakes and wetlands. The park offers a wealth of recreational activities including skiing, skating, tobogganing and snowmobiling in winter, to cycling,



hiking and canoeing in summer. It is not uncommon for visitors to encounter a wide variety of wildlife that makes its home in the park, both on land and in the water.

Located just east of Turtle Mountain Provincial Park is another discovery that outdoor lovers will want to be sure not to miss. **William Lake Provincial Park** is well-liked by windsurfing enthusiasts because of its rounded shape, clear water and gas-motor restrictions. But that's not all there is to experience. Panoramic views await those who hike the Turtle's Back Trail. Fishing, swimming and seasonal interpretive shows in the park's amphitheater are also enjoyed by park visitors each year.

One of the most unique parks in Southwestern Manitoba is the heritage site which celebrates two pioneer families who are celebrated for their contributions to science, art, sports and culture. The **Cridle/Vane Homestead Provincial Heritage Park** includes hiking trails, the site of the first entomological field station in western Canada and other notable features which harken back to first settlement.


If your visit to Southwestern Manitoba includes a celebration of the area's unique geography and natural history, you're sure to enjoy a visit to any of these great parks.

See also: **Spruce Woods Provincial Park**, a Manitoba Star Attraction, featured in "Be Sure To See Our Stars" on page 6.

*'A Perfect Gift for anyone that loves the outdoors is inviting them on an adventure.'*

– Ben Stookesberry

Wasagaming @ozkarvagando



**Meadowlark**  
CAMPGROUND & RV PARK

wireless internet  
full-service  
pull-thrus  
30 or 50 amp  
free showers

Highway #1  
BRANDON, Manitoba

**1.800.363.6434**  
info@meadowlarkcampground.ca

www.MeadowlarkRVPark.com

**a great base for your outdoor adventures!**



**TURTLE MOUNTAIN RESORT**

**LAKE METIGOSHE**

- Cabin Rentals
- Velvet Antler Cafe
- Convenience Store
- Liquor/Beer Vendor

Experience the call of the wild!  
**www.tmresort.ca**  
204-747-3919  
reservations@tmresort.ca

CAMPING | GOLFING | BEACH | TRAILS | ROCKIN' THE FIELDS | SHOPPING  
FARMERS MARKETS | MUSEUMS | MINNEDOSA LAKE | BIKING | FUN FEST  
BISON PARK | SKATE THE LAKE | SKI VALLEY | FISHING | HUNTING




**MINNEDOSA**  
valley life



50KM SOUTH OF RMNP | 50KM NORTH OF BRANDON | 200KM WEST OF WINNIPEG  
AT HIGHWAYS #16 & #10

WWW.DISCOVERMINNEDOSA.COM

# Don't forget your CLUBS




Situated in Riding Mountain National Park The Clear Lake Golf Course remains one of the most unique and beautiful courses in Manitoba.

To book tee times call 204-848-4653 or visit [clearlakegolfcourse.com](http://clearlakegolfcourse.com)

You'll quickly discover that Manitoba's reputation as a flat prairie ideal is a myth when you test your skills on any of our region's fantastic golf courses. **More than 40 challenging courses can be found in Western Manitoba,** each carved by the unique geography that this glacier-carved landscape has to offer. Surprising elevation changes, scenic views and a great day on the links awaits you when you tee up in Westman.



Neepawa Golf & Country Club

Carberry is home to the **Sandhills Golf & Country Club**, offering a relaxed and enjoyable nine hole course. Offering practice facilities, a licensed clubhouse nearby camping and a casino, you may want to plan to stay in the area for a few days in addition to playing this course.

It's interesting to note that the **Clear Lake Golf Course** was built in two stages over a six year period between 1928 and 1934 when it opened to the public. Situated on the east end of Clear Lake in Riding Mountain National Park, this course boasts being one of the most unique and beautiful courses in Manitoba.

Offering a challenging but responsive course for golfers of all skill levels, the **Neepawa Golf & Country Club** offers breathtaking views from elevated tees throughout the course. Built along the escarpment of the Whitemud River, the natural beauty of this course is second to none. The well-established trees and natural terrain is complimented by the winding river that weaves through the area. Stop in and play 18 holes on their par 72 course.

With A-4 bentgrass greens and four tee decks on each hole, the **Oak Island Resort** encourages golfers to escape to the Island for the spectacular scenery of a course that winds through prairie wetlands. Offering a licensed restaurant, fully stocked pro shop and a fleet of 75 rental carts, Oak Island offers an 18-hole course for golfers of all skill levels.

*Scenic views and a great day on the links awaits you when you tee up in Westman.*

Three blind holes and plenty of water hazards contribute to a challenging day on the links at the **Souris & Glenwood Community Golf Course**. A licensed clubhouse offering full course meals offers a panoramic view of the course at the ninth hole. Players are invited to bring their own cart or rent from the available fleet on site.

The **Hartney Golf Club** offers nine holes of action on a newly restored course with a fully licensed club house overlooking the scenic surrounding landscape. Re-designed and improved after devastating floods of 2011, this is a course that challenges you to try and conquer it this golf season.

Set in the picturesque south end of Pelican Lake, **Pleasant Valley Golf Club** is a one of a kind family owned and operated golf course. Elevations rise up 125' on beautiful tree lined fairways, a winding creek meanders throughout the course and large, manicured, undulating greens challenge you on every hole!



ONLY  
1 HOUR  
FROM  
BRANDON

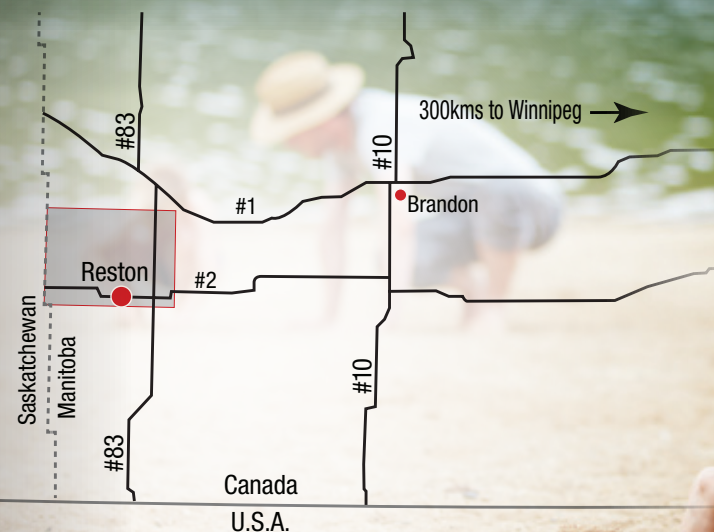


MUNICIPALITY OF  
**PIPESTONE**  
RESTON • SINCLAIR • CROMER • PIPESTONE



*Come out and see what the RM of Pipestone has to offer!*

Spray Park & Waterslide • **NEW** Lake & Beach Area • 9-Hole Golf Course  
Full-Service Campground • **Plus Much More!**



**killarney**  
lakeside golf club

*Hidden Jewel of the South*

Celebrating 100 Years

Located in southwest Manitoba along the shores of Killarney Lake, our 18 hole golf course will provide a challenge for all level of golfers.

- driving range
- pro shop
- tournament and group bookings available
- golf car rentals
- licensed restaurant
- club rentals
- walk-ups welcome

To book a tee time call (204) 523-8277 and visit us at [www.killarneylakeside.com](http://www.killarneylakeside.com)  
Kitchen open until December 31<sup>st</sup>

**Pleasant Valley**  
Golf Club

Pleasant Valley Golf Club is a family owned and operated golf course. Nestled in the Scenic Pembina Valley at the south end of Pelican Lake, this 18 hole course offers a challenge for all



- Large greens cut into hill sides
- 9 hole putting green
- A winding creek, tree lined fairways
- 125 ft elevation difference between nines
- 40 golf car rentals
- Club rentals
- Licensed clubhouse and restaurant
- Only 20 minutes from Killarney!



Corporate and Group Bookings Welcome.  
To Book Tee Times in Advance Call: (204) 537-2487  
Visit us at [www.pleasantvalleygolfclub.ca](http://www.pleasantvalleygolfclub.ca)

**Minutes Apart, But Hours of Fun.** Discover These Two Well-Groomed Championship Courses In Southwestern Manitoba.

[rmofpipestone.com](http://rmofpipestone.com)

TOWN	NAME	PHONE NO.	HOLES	YARDS	PAR(W/M)	RENTALS
BELMONT	Pleasant Valley Golf Club	(204) 537-2487	18	5874	71/71	YES
BINSCARTH	Binscarth Golf Club	(204) 532-2480	9	1715	35/34	NO
BIRTLE	Birtle Riverside Golf Club	(204) 842-5364	9	2615	35/34	YES
BOISSEVAIN	Boissevain Golf Club	(204) 534-2365	9	2700	34/33	YES
BRANDON	Deer Ridge Golf Course	(204) 726-1545	9	5276	35/35	YES
BRANDON	Glen Lea Golf Club	(204) 728-9090	18	5609	72/70	YES
BRANDON	Northern Pines Golf Course	(204) 728-6967	9	1915	32/31	YES
BRANDON	Sunnyside Golf Club	(204) 728-2374	18	6193	70/72	YES
BRANDON	Wheat City Golf Course	(204) 729-2177	18	6067	72/71	YES
CARBERRY	Carberry Sandhills Golf & Country Club	(204) 834-2325	9	3228	36/36	YES
CARTWRIGHT	Cartwright Town & Country Club	(204) 529-2260	9	2427	35/35	YES
DELORAINE	Deloraine Golf & Country Club	(204) 747-2411	9	2933	36/36	YES
ELGIN	Whitewater Centennial Park & Golf Course	(204) 769-2404	9	1345	30/29	NO
ELKHORN	Elkhorn Golf & Country Club	(204) 845-2161	9	2530	35/33	NO
GLADSTONE	Gladstone Golf & Country Club	(204) 385-2998	9	3180	39/36	YES
GLENBORO	Glenboro Golf & Country Club	(204) 827-2856	9	3020	36/35	YES
HAMIOTA	Hamiota Golf Club	(204) 764-2341	9	2404	33/33	YES
HARTNEY	Hartney Golf Club	(204) 858-2011	9	2783	36/35	YES
KILLARNEY	Killarney Lakeside Golf Course	(204) 523-8277	18	6180	71/71	YES
MACGREGOR	MacGregor Town & Country Golf Club	(204) 685-2600	9	2936	38/35	YES
MELITA	Townsend Valley Golf Course	(204) 522-3820	9	3063	37/35	YES
MINIOTA	Miniota Golf Club	(204) 567-3553	9	1947	32/32	YES
MINNEDOSA	Minnedosa Golf & Country Club	1-888-867-3151	18	6452	72/72	YES
NEEPAWA	Neepawa Golf & Country Club	(204) 476-5711	18	6538	72/72	YES
OAK LAKE	Oak Island Golf Resort	1-888-855-2262	18	6700	72/72	YES
OAK LAKE	Oak Lake Golf Club	(204) 855-2641	9	1992	32/32	YES
ONANOLE	Lakewood Hills Golf Course	(204) 848-2450	9	2806	36/35	YES

TOWN	NAME	PHONE NO.	HOLES	YARDS	PAR(W/M)	RENTALS
ONANOLE	Poplar Ridge Golf Course	(204) 848-2382	18	6642	75/72	YES
PILOT MOUND	Pilot Mound Town & Country Golf Club	(204) 825-2766	9	3012	36/36	YES
RAPID CITY	Valleyview Golf Club	(204) 826-2515	9	3063	35/34	YES
RESTON	Reston Golf Course	(204) 877-3511	9	2843	34/34	YES
RIDING MOUNTAIN NATIONAL PARK	Clear Lake Golf Course	(204) 848-4653	18	6076	75/72	YES
RIDING MOUNTAIN NATIONAL PARK	Elkhorn Resort Golf Course	1-866-355-4676	9	1500	30/30	YES
RIVERS	Riverdale Golf & Country Club	(204) 328-7122	9	3061	72/70	YES
SANDY LAKE	Sandy Lake Golf Course	(204) 585-5227	9	2885	38/34	YES
SHILO	Shilo Country Club	(204) 765-3623	18	6605	71/72	YES
SHOAL LAKE	Lakeside Golf Club	(204) 759-2002	9	3040	37/36	YES
SOURIS	Souris & Glenwood Community Golf Course	(204) 483-2956	9	3098	36/35	YES
VIRDEN	Virden Wellview Golf Club	(204) 748-1721	9	3110	36/36	YES
WASKADA	Waskada Golf Club	(204) 673-2699	6	1536	22/22	NO

\*All of the above highlighted courses are members of Tourism Westman.



Create lasting  
**MEMORIES**



Main: Crow's General Store, Brandon, Photo Credit: Sandy Black.  
Top & Right: Westwood Ranch Garden Centre, Elkhorn/Kola.

**The delighted squeals of children serve as the soundtrack for some of the area's most popular all ages attractions; offering not only a recreational outlet but also opportunities for educational enrichment. If you're looking for somewhere to head for some fun this summer, be sure to consider this line up of sure to please spots!**

The opportunity to see and admire a variety of domestic and exotic animals awaits at the **Westwood Ranch Garden Centre** near Elkhorn/Kola. Zebras, llamas, Wallaroos, Miniature Donkeys, Parrots are among the collection of species that make their home at the ranch. The garden centre includes Ten Greenhouses, a Gift Shop & Snack Stop. Great for a family day trip, the ranch also offers horticultural workshop days and is available for group tours and school bookings.

You can expect a day of outdoor fun with a slate of interactive features for your youngsters when you visit **Meandher Creek Pumpkin Patch** northwest of Oak Lake. Promoted as the place "where fun grows", the Patch opens for September and October each year featuring a corn maze, hay bale fun park, a rubber duck race track, train rides, and also a selection of farm produce and baked goods. Reap a bountiful harvest of fun for all at the pumpkin patch.

Need a change of scenery? **Lucky Break Ranch & Tack** offers Certified Equine Assisted Learning (EAL) Facilitators and Certified CHA Riding Instructors who have a passion for horses and helping people. They offer fun-filled programs that are full of interaction with horses, developed to help participants build fundamental life skills, expand confidence in life (and around horses), and learn to ride and care for horses in a safe, controlled environment. This beautiful ranch near Rivers has a great group of horses that look forward to hitting the trail and providing you with a fun, peaceful get away where you can tour the valley, see the buffalo, and explore the beautiful surrounding area!

If you can't get to the nearest lake, there are still plenty of options to cool off when the mercury rises each summer. When the temperatures climb, Westman is home to a number of both indoor and **outdoor waterparks**. In Souris, the heated outdoor waterpark features four slides, a lazy river and beach entry that makes the pool accessible to all ages and mobility levels. In Wawanesa, the pool and waterpark is located in the community park and features a five lane junior Olympic pool, deck sprays and a ten foot diving board. In Minnedosa, you will find Manitoba's very fist floating Splish Splash Water Park at Minnedosa Beach. Have fun getting launched from the jumping pillow, blasting down the big slide or hanging from the jungle bar on the 100-person water park playground and one of a kind attraction!

Every now and again a person stumbles into a location, or some local attraction, that makes them ask themselves "how did I not know that this place existed before?". **Crow's General Store** in Brandon is just one of those places that is a must see for locals and out of towners. The main floor of the building has been converted into a throwback ice cream shop complete with an old soda fountain, classic milkshake mixers, sundae glasses, coke machines and signage that takes a person back down memory lane. It is the perfect spot to head out for a nature walk, grab an ice cream, and enjoy both the craftsmanship and detail that has gone into this unique attraction!

Of course, if it's water recreation that you're after, one of Westman's premiere destinations is Brandon's **Community Sportsplex**. This facility is home to an arena, 50-metre accessible swimming pool with waterslide, and multi-level diving boards, as well as racquetball courts and track and field facilities. Also in Brandon is the **Dood Cristall Family YMCA** which has been recently renovated with a 25-metre lap pool, recreational waterpark with lazy river, spray features and waterslide.

*See also the Westman Reptile Gardens and the Riverbank Discovery Centre, featured in "Be Sure to See Our Stars" on page 6.*



Souris Waterpark

Municipality of  
**NORTH NORFOLK**

9-Hole Golf Course (MacGregor)  
Several Campgrounds  
July 1st Celebrations (Austin)  
MacGregor Fair  
(Last Weekend in June)  
Splash Park (MacGregor)  
Hockey & Curling (Winter)

[www.northnorfolk.ca](http://www.northnorfolk.ca)

# Prairie View Municipality

SOMETHING FOR EVERYONE

[myprairieview.ca](http://myprairieview.ca)

- Golf
- Hiking
- Skiing
- Tennis
- Lakes
- Beaches
- Biking Trails
- Campgrounds
- Museums



Miniata Playground



Wakpa Janka Lookout



Birtle Beach

- BIRTLE
- MINIOTA
- FOXWARREN
- BEULAH
- SOLSGIRTH
- CRANDALL
- ISABELLA
- ARROW RIVER

Explore Our  
**VIBRANT  
HORIZON**

*Dive into* our rich history, and come and explore our beautiful landscape throughout the Municipality of Grassland

HARTNEY LAUDER GRANDE CLAIRIERE ELGIN FAIRFAX MINTO

LAUDER SANDHILLS



HARTNEY SWIMMING POOL



HARTNEY GOLF CLUB



WHTEWATER PARK



Discover more at [grasslandmunicipality.ca](http://grasslandmunicipality.ca)  
Online campground bookings available on our website.  
Contact us at [rec.edo@mglgov.ca](mailto:rec.edo@mglgov.ca) or 204-858-2536



For those with an eye for beauty and an ear for a tale well told, Neepawa is worth finding. Take a trip through this quintessential small town, and embrace the colourful characters and scenery that make up one of Manitoba's prettiest towns. Find out more at [neepawatourism.ca](http://neepawatourism.ca) and **Neepawa Tourism** on Facebook.

**Neepawa**  
Where stories take a beautiful turn



**SHAMROCK CENTRE,  
the Recreation Destination  
of SouthWest Manitoba.**

Shamrock Centre is the home to a Community Hall, Skating Rink, Curling Rink, Lounge, Six Lane Bowling Alley, Weight Room/Fitness Centre, Boardroom, Offices, Kitchen/Canteen Facilities, and much much more.

725 Broadway Avenue, Killarney, MB  
Phone 1-204-523-8920  
Fax 1-204-523-8349

Facility Manager – Wendy Giesbrecht  
[krec.w@mymts.net](mailto:krec.w@mymts.net)



# GETTING AWAY from it all

Main: Spruce Woods Provincial Park © @michaelscottpeters94



Aspen Grove Campground, Oak Lake



Killarney Ag Society Campground

Enjoy Manitoba's clear and starry skies with the crackle of a camp fire in your ears and the company of those you hold dear. Our region is home to some of the finest settings for camping and getting back to nature. Whether your camping preferences are roughing it in a tent, or you lean more toward the latest trend of "glam-ping", maintaining a level of the comforts of home while you travel, you're sure to find a campground that will become a favourite for years to come.

**Aspen Grove Campground**, located conveniently between Virden and Oak Lake, is one of Westman's best kept secrets! Whether heading out for the weekend, cross country road trip or continental travel, you're sure to find something to suit your needs. Some on-site amenities include an outdoor heated pool, laundromat, C-Store, hot showers, modern play structure, mini golf and walking & biking trails. Come & enjoy a campfire at your site while making memories that will last a lifetime!

Situated just nine kilometres south of the Trans-Canada highway is the prairie oasis known as **Oak Island Resort**. With 400 seasonal campsites available, visitors have access to a public beach, swimming pools, splash pad, mini golf as well as the Oak Island Golf Course – one of Manitoba's finest 18 hole courses. Oak Lake is observed as a fisherman's paradise all year round – offering pickerel, northern pike and perch.

Situated along beautiful Pelican Lake, **Strathcona Park** is a popular summer destination for families and individuals each year. Featuring 40 sites – serviced and un-serviced options are available for visitors including electrical and water hook ups; with an ice cream/convenience store on-site. If you are looking for a getaway to enjoy nature, watersports & nearby golfing at the scenic Pleasant Valley Golf Course, look no further! This place has it all.



Conveniently located on the Trans-Canada Highway at Brandon's North Hill, **Meadowlark Campground** is home to 75 sites with both 30 and 50 amp full hook ups. A laundromat as well as clean showers and washrooms, a small convenience store and wireless internet access on site add to your comfort during your visit. Open from April to October, Meadowlark is a popular destination for travellers criss-crossing the prairies each year.

Not far from Riding Mountain National Park, **Sandy Lake Campground** is centrally located and offers a great summer getaway with a varied slate of attractions and activities. A popular year-round destination for hunting, snowmobiling and ice fishing, Sandy Lake is a busy place in the summer as everyone residing locally is just a short walk from the boat launches, swimming, and beautiful picnic sites.

Spacious and shaded sites are the highlight for the **Shady Oaks R.V. Resort & Campground**, located on the Trans-Canada Highway between Brandon and Portage La Prairie near Austin. This campground features cabin rentals, a heated pool, modern shower facilities and WiFi service for those that want to stay connected.

Whether rest and relaxation is on the menu or you're looking for a more active adventure during your vacation, the **Riverside Park and Campground** in Birtle might have just what you're looking for. Offering 32 serviced camp sites, this venue offers tennis on plexi-pave courts, a sloping sandy beach, kayaking, walking trails and picnic areas.



Strathcona Park



Kerry Park Campground, Killarney



See also "Be Sure To See Our Stars" on page 6 and "At Peace in the Great Outdoors" on page 42 for more great camping destinations.

COME ENJOY OUR FESTIVALS!

**Ponderosa Days in Cartwright**  
– August Long Weekend

**Mather Fall Festival**  
– Annually in Late September

Call 529-2307 for more information,  
or visit [www.cartwrightroblin.ca](http://www.cartwrightroblin.ca)



CARTWRIGHT-ROBLIN MUNICIPALITY

# Aspen Grove

## CAMPGROUND

[www.aspengrovecampground.com](http://www.aspengrovecampground.com) | [aspengrovecampground@gmail.com](mailto:aspengrovecampground@gmail.com)

1.204.855.2260

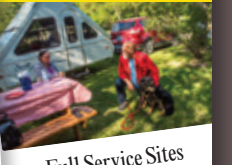
Oak Lake, Mb



Heated Outdoor Pool



Mini Golf Course



Full Service Sites

Come and enjoy the best kept camping secret in Southwest Manitoba today!  
Located on the TransCanada Hwy, 14 kms east of Virden, 9 kms west of Oak Lake.



<p>Cliff <b>Cullen</b> MLA for Spruce Woods</p>	<p>Reg <b>Helwer</b> MLA for Brandon West</p>	<p>Eileen <b>Clarke</b> MLA for Agassiz</p>	<p>Len <b>Isleifson</b> MLA for Brandon East</p>	<p>Greg <b>Nesbitt</b> MLA for Riding Mountain</p>	<p>Doyle <b>Piwniuk</b> MLA for Turtle Mountain</p>

[ccullenmla@mts.net](mailto:ccullenmla@mts.net)      [agassizmla@outlook.com](mailto:agassizmla@outlook.com)      [gregnesbittmla@mymts.net](mailto:gregnesbittmla@mymts.net)  
[reghelwer@wcgwave.ca](mailto:reghelwer@wcgwave.ca)      [brandoneastmla@shaw.ca](mailto:brandoneastmla@shaw.ca)      [info@doylepiwniuk.ca](mailto:info@doylepiwniuk.ca)

# CAMPGROUND LISTING

## NAME & CONTACT DETAILS (Alphabetically by location)

	BASIC SERVICE SITES	ELECTRICAL SITES	ELECTRICAL/WATER SITES	FULL SERVICE SITES	HOOK-UP AMPERAGE	SEWAGE DISPOSAL	WASHROOMS	DRINKING WATER	SWIMMING	GOLF COURSE (Nearby)	CONVENIENCE STORE	BOAT LAUNCH	BBQ PITS	LAUNDROMAT	SHOWERS
<b>Manitoba Agricultural Museum Campground</b> Austin · (204) 637-2354		64				•	M								•
<b>Argyle Centennial Park – Baldur</b> · (204) 535-2176	12	8			15	•	M	•		•					
<b>Birtle Riverside Park – Birtle</b> · 1-800-417-1022	4	18	13		15/30	•	M, N		P, B	•					•
<b>Boissevain Lions Campground</b> Boissevain · (204) 534-6472			12	22	15/30	•	M	•	P	•					•
<b>Grand Valley Park &amp; Campground – Brandon</b> · (204) 573-3798	10	20	6		15	•	M								•
<b>Meadowlark Campground – Brandon</b> · (204) 728-7205			10	65	15/30/50	•	M	•		•	•				•
<b>Turtle Crossing Campground – Brandon</b> · (204) 571-0750	50		100	65	15/30	•	M	•		•	•				•
<b>Heritage Park Campground – Cartwright</b> · (204) 529-2363			10		15/30/50		M	•	B	•	•				
<b>Rock Lake Campground – Cartwright</b> · (204) 529-2365			9	13	15/30		M	•	B	•	•	•			
<b>Crystal City Campground – Crystal City</b> · (204) 873-2591			5	7	30	•	M	•		•	•				•
<b>Deloraine Winchester Campground</b> Deloraine · (204) 747-3000	10	10	1		15/30	•	M	•		•					•
<b>Whitewater Recreational Park &amp; Golf Course</b> Elgin · (204) 741-0905			18		20	•	M		B	•	•	•			•
<b>Elkhorn Campground – Elkhorn</b> · (204) 845-2161	10			10	30	•	M			•					•
<b>Erickson Campground – Erickson</b> · (204) 636-2431	23			12	30		M	•		•					•
<b>Williams Park Campground – Gladstone</b> · (204) 385-2332		12	35		15/30	•	M	•	P	•	•				•
<b>Spirit Sands Lodging RV Park</b> Glenboro · (204) 827-2607				12	15/30	•		•		•					•
<b>Hamiota Municipal Park – Hamiota</b> · (204) 764-3050	9	10		45	30	•	M	•	P	•	•				•
<b>Hartney Swimming Pool &amp; Campground</b> Hartney · (204) 858-2536				18	30	•	M	•	P	•					•
<b>International Peace Garden Campground</b> International Peace Garden · (204) 534-2510	6	8	20		15/20	•	M	•		•					•
<b>Killarney Ag Society Campground</b> Killarney · (204) 523-4699			20	89	20/30	•	M	•	B	•		•	•	•	•
<b>Kerry Park Campground – Killarney</b> · (204) 523-6000		32		138	15/30	•	M	•	B	•		•	•	•	•
<b>River Park Campground – Melita</b> · (204) 522-3413			25		15/30/50	•	M	•	P	•	•	•	•	•	•
<b>Sourisford Municipal Park – Melita</b> · (204) 522-3263			2				N	•		•	•				
<b>L &amp; F Campground – Melita</b> · (204) 522-3183				15	30/50	•		•	P	•	•				•
<b>Miniota Campground – Miniota</b> · (204) 567-3553			11		15/30	•	M	•		•					•
<b>Minnedosa Campground – Minnedosa</b> · (204) 867-3450	32	31	62	29	15/30	•	M	•	B	•	•	•	•		•

<b>Lions Riverbend Park – Neepawa</b> · (204) 476-7676	5	26	15	16	15/30/50	•	M	•	P	•					•
<b>Happyland Campground – Ninette</b> · (204) 528-2653	30		18	8	15/30	•	M	•	B	•					•
<b>Pelican Lake Riviera – Ninette</b> · (204) 724-4456				20	30				B	•					•
<b>Pelican Shores RV Park – Ninette</b> · (204) 528-2624				51	51	30/50	•		•	B	•	•	•	•	•
<b>Aspen Grove Campground – Oak Lake</b> · (204) 855-2260	3			15	180	30/50	•	M	•	P, B	•	•			•
<b>Deleau-Sifton Centennial Park – Oak Lake</b> · (204) 855-2423								N			•				
<b>Oak Island Resort – Oak Lake</b> · (204) 855-2307				63	238	30	•	M	•	P, B	•	•	•	•	•
<b>Oak River Campground &amp; Driving Range</b> Oak River · (204) 566-2146	2	2	4	4	15/30	•		•			•	•			•
<b>Strathcona Park – Pelican Lake</b> · (204) 537-2583		30	10		15/30	•	M			B	•	•	•	•	•
<b>Pierson Campground – Pierson</b> · (204) 634-2231		6	6		15/30	•	M	•			•	•			•
<b>Pilot Mound Campground – Pilot Mound</b> · (204) 245-0680				24	30	•	M	•	•	•	•				•
<b>Community Campground – Pipestone</b> · (204) 854-2978		12			30		M, N	•			•				•
<b>Hidden Valley RV Park – Pleasant Valley</b> · (204) 825-0165	50	50	50	50	30/50	•	M			B	•	•	•	•	•
<b>Rapid City Centennial Park – Rapid City</b> · (204) 826-2515		8			30		M			B	•	•	•	•	•
<b>Reston Campground – Reston</b> · (204) 877-3327	0	4	0	18	30	•	M	•	•	•	•				•
<b>Sleep-Eze Park – Reston</b> · (204) 877-3187			4					N	•		•				•
<b>Rivers Provincial Park – Rivers</b> · 1-888-482-2267	11	18		30	15/30	•	M, N	•	B	•	•	•	•	•	•
<b>Last Resort Campground – Sandy Lake</b> · (204) 585-2725				46	30	•	M	•	B	•	•	•	•	•	•
<b>Sandy Lake Lions Campground</b> Sandy Lake · (204) 585-2525		29	26		30	•	M	•	B	•	•	•	•		•
<b>Sandy Lake Motel &amp; Campground</b> Sandy Lake · (204) 585-2595				20	30	•	M	•	B	•	•				•
<b>Lakeview Park – Shoal Lake</b> · (204) 759-2629	8	12	4		15/30	•	M	•	B	•	•	•	•		•
<b>Marshall Chambers Park – Shoal Lake</b> · (204) 759-2565	5		22		15/30	•	M	•	B	•	•	•	•		•
<b>Shady Oaks Campground – Sidney</b> · (204) 466-2777	40	33	7	18	15/30	•	M	•	P	•	•				•
<b>Victoria Park – Souris</b> · (204) 483-5212			60	5	15/30	•	M	•	P	•	•				•
<b>Kiche Manitou Campground</b> Spruce Woods Provincial Park · 1-888-482-2267	87	107			15/30	•	M, N	•	B	•	•	•	•	•	•
<b>Salt Lake/Thomas Lake – Strathclair</b> · (204) 365-2196		40			20/30		M		B	•		•	•		•
<b>Adam Lake Campground</b> Turtle Mountain Provincial Park · 1-888-482-2267	24	45	36		15/30/50	•	M, N	•	B	•	•	•	•		•
<b>Max Lake Campground</b> Turtle Mountain Provincial Park · 1-888-482-2267	19							•	M, N	•	B	•	•	•	•
<b>Virdeon Lions Park – Virdeon</b> · (204) 851-1371	12		19	40	15/30	•	M	•		•					•
<b>Waskada Park – Waskada</b> · (204) 673-2401			3	2				•	M	•		•			•
<b>Wawanesa Lions Park – Wawanesa</b> · (204) 824-2513	15	12	15		30	•	M	•	P	•					•
<b>William Lake Provincial Park</b> William Lake · 1-888-482-2267	52							•	M, N	•	B	•	•		•

CAMPGROUND LEGEND: SWIMMING: B = Beach P = Pool • WASHROOMS: M = Modern N = Non-modern

# Chart your own ADVENTURE



Main: HyLife Back Forty Multi-Use Trail Park, Neepawa. Top: William Lake, Turtle Mountain Provincial Park, Photo Credit: Erica Holloway. Right: Rosedale Farm Trail @bikes\_of\_mb

Though Western Manitoba is home to a number of scheduled events and popular attractions that greet thousands of visitors each year, you may find that your rural adventure calls you to explore some of the region's unpopulated wilderness for an escape that is all your own. **Exploring trails, watching wildlife, or even spending time on the prairie soil** that still appears as it did a century ago offers a self-directed expedition that will nourish your soul.

A birder's paradise awaits in southern Manitoba, with important **bird watching areas identified in the communities of Pierson, Melita and Boissevain** as well as the plains between these communities. This region attracts bird enthusiasts from around the world to visit the Manitoba Grasslands Birding Trail for an opportunity to spot some of the region's native upland birds including pheasants, partridges and prairie chickens. At the center of this birding oasis is Whitewater Lake, a seasonal home to a number of migratory fowl.

**Walking tours through the scenic cliffs that border the valley community of Wawanessa**, or exploring the river by canoe are two popular activities for visitors to Seddon's Landing. This site allows you to see the community just as David Thompson may have when he surveyed the area for the North West Company in 1797.



Big Valley, near Neepawa  
 @bachelormeow



Pitlochry Trail, Hamiota

*‘People don’t take trips, trips take people.’*

— John Steinbeck

*Explore some of the region’s unpopulated wilderness for an escape that is all your own.*

Seventeen miles of recreational trails connect the communities of Ninette and Belmont on the Strathcona Centennial Trail which follows the path of the previous rail line right of way. Travellers can access the trail at various points to experience the diverse prairie ecosystems from agricultural prairies to wetlands and enjoy sightseeing on foot, bicycle, ATV, or even by snowmobile in winter months.

Hamiota is home to two trails, each offering a distinct experience for visitors. The Chumah Trail takes visitors west of the community. With more tree and bush cover, this is a popular choice for cross country skiers in winter and provides a great venue for birdwatching as well as enjoying prairie grasslands and native vegetation in summer. The Pitlochry Trail takes visitors east of town to experience the prairie wetlands and experience the sights and sounds of migratory waterfowl that make their summer home here.

An urban trail system, the Assiniboine Riverbank Trail System stretches 17 kilometres through the heart of the city of Brandon. The trail system ranges from natural river bottom forest to paved, illuminated walkways with access to sports sites as well as local dining and shopping venues. Make a day of it and plan for a picnic at any of the parks and outdoor shelters that accompany the trail.

The new HyLife Back Forty Multi-Use Trail Park is a family-friendly, naturally distant recreation space that will make Manitoba proud. The 40 acre park is located at the north end of Neepawa and provides free a recreation and active living area for all ages. Word of mouth is already drawing cyclists from across southern Manitoba and Saskatchewan. The 6 km cycling course includes trails with increasing levels of difficulty, a pump track and a skills loop with wooden features. The natural grade plus man-made hills combine short technical climbs and flow trail descents. Cyclists say there is nothing ‘like it’ in the Province!

# MINNEDOSA CAMPGROUND





LAKESIDE CAMPING | FREE FIREWOOD  
 170 SITES | 15 & 30 AMP SERVICE | PULL THROUGH SITES  
 MDSACAMP@MTS.NET | 1-888-867-3450

# RM OF YELLOWHEAD

WELCOMES YOU

SHOAL LAKE  
STRATHCLAIR  
OAKBURN  
ELPHINSTONE



Come and see what the **Municipality of Yellowhead** has to offer. With amazing parks, three beautiful museums and spectacular views, you will be surely find something interesting and unique. We have a wonderful 9-hole golf course, lakeside camping with swimming areas, pull through sites, fishing, walking trails, thriving businesses throughout our municipality, and the most genuine people you have ever met.

**[YELLOWHEADMUNICIPALITY.CA](http://YELLOWHEADMUNICIPALITY.CA)**



# Making a **SPLASH** *or SOAKING* **UP** *the sun*

Birtle Beach

Sandy Lake ©@katiemillersk



Given our national reputation as a leading Province for agriculture, it may surprise visitors to learn that Southwestern Manitoba is home to some of the Province's finest beaches and lakes. Attracting return visitors annually from all across the country and beyond, **here are some of the outstanding locations where you can bring the whole family to soak up the sun or make a splash.**

A sandy beach with large playground and picnic area already contributed to **Erin Park's** reputation as a summer hotspot in Killarney. The addition of a recently constructed spray park and the nearby access to the Beach Hut restaurant and adjacent mini golf course as well as ample camping opportunities in and around the park create additional opportunities for recreation and leisure during your stay.

Straddling the Canada – U.S. border, **Lake Metigoshe** welcomes visitors from all parts of North America to celebrate the unique relationship between our two neighbouring nations. But more than just public beaches greet you upon arrival. Metigoshe's reputation as a tourist hot spot have contributed to the development of restaurants, vendors, groceries, play areas, boardwalk, picnic area and observation tower with interpretive trails. Water recreation on site is merely part of the attraction.

Dubbed Manitoba's Valley Paradise, it's a reputation that the community has certainly earned because of the popularity of **Minnedosa Beach**. Situated on the eastern shore of Minnedosa Lake, a man-made reservoir along the Little Saskatchewan River, the beach welcomes visitors as soon as the temperatures make water recreation possible. Recognized as western Canada's premiere venue for paddling and rowing, the lake is regularly used by kayakers, dragon boaters and other water sport activities.

Boasting its status as the largest navigable body of water in Southwest Manitoba, measuring 22 kilometres long and 2.5 kilometres wide, **Pelican Lake** is great for swimming and boating, but is also popular with fishermen and bird watchers. The geography of the area makes this lake a premiere destination for wind surfing and sailing and is even home to its own yacht club that hosts regattas and races each year. Ever wanted to learn how to sail? Pelican Lake offers a premiere destination for those who want to pick up that skill with sailing lessons offered each summer.

*'We didn't know we were making memories, we just knew we were having fun.'*

*- Unknown*



Top: William Lake Beach.  
Left: Shoal Lake  
© @allisonlauree



Main: Pelican Lake, Ninette © @caley.brown.photography.

*Take advantage of the Province's finest beaches and lakes.*

  
**Desjard-Inn**  
MODERN AFFORDABLE ACCOMMODATIONS  
[www.desjard-inn.com](http://www.desjard-inn.com)

**Desjard Inn Birtle**  
FRIDGE, MICROWAVE, COFFEE, FREE WIFI  
WINTER PLUG-INS, NON-SMOKING,  
40 MINUTES FROM ASESSIPPI

**832 MAIN STREET, BIRTLE, MB  
204.842.3889**

**RIVERDALE MUNICIPALITY**



Fair Trails Parks  
Lake / Beach  
Golf Course  
Campground  
Fishing Derbies  
Provincial Park  
Recreation Facilities  
Boating / Water Sports

*Live, work, play and grow with us!*

For more information contact The Municipal Office **204.328.5300**  
Email [admin.riverdale@mymts.net](mailto:admin.riverdale@mymts.net) or visit us at [www.riversdaly.ca](http://www.riversdaly.ca)

**CONNECTING COMMUNITIES**

**CJRB** Radio 1220    **DISCOVER WESTMAN** .COM

**GOLDEN WEST**

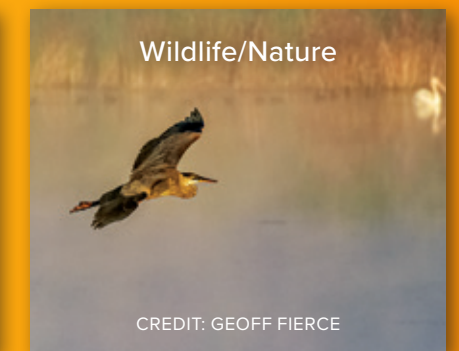
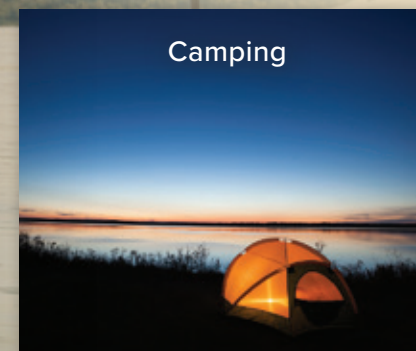
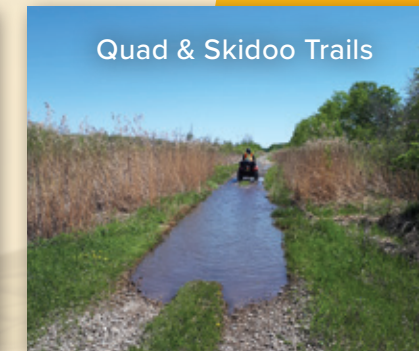
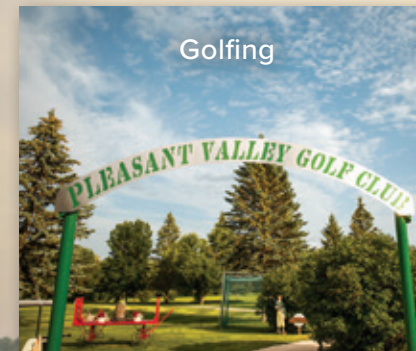
Welcome to the  
**RM OF PRAIRIE LAKES**

Explore over 50km of shore on Southwest  
Manitoba's Largest Navigable Lake



*Come for the Day... Stay for a Lifetime*

For more information visit  
[www.rmofprairielakes.ca](http://www.rmofprairielakes.ca)



Camping, Cottage and Housing Developments Available



# GO PLAY

*in the snow*



Hanbury Hill,  
Brandon,  
Photo Credit:  
Sandy Black



Cross Country Skiing, Langford Winter  
Park, Neepawa ©@allisonlauree

While rural Manitoba is readily recognized as a favorable destination in Summer, the volume and variety of available recreation does not wilt with the changing of the seasons. In fact, it's possible that Southwest Manitoba is even busier in the Winter with the arrival of snow.

If you're looking for an affordable way to have fun and get active this winter, we encourage you to check out **The Valley View Tubing Hill** near MacGregor! The Tubing Hill runs from mid December to mid March (weather permitting) and is open to the public as well as groups. Use of tubing hill is by pre-booking only. Bookings must be completed online at [tubinghill.ca](http://tubinghill.ca) prior to arrival. Facilities include a fully groomed hill, tow rope system, outdoor warm-up area with fire pit and chalet building with bathrooms, wood stove, tables and canteen.

A scenic site for cross-country skiing in Western Manitoba; **Hellman's Cross Country Ski Trails** can be found three kilometres east of Virden. The groomed trails span approximately five kilometres, winding through

valleys and over hills. The network of trails run through the property and range in their level of difficulty, from beginner, to challenging ones. Access to both trails is found on the far side of the parking lot. The Hellman Ski Trails are free of charge.

If downhill skiing is more your speed, **Ski Valley**, just north of Minnedosa offers an automated chair lift to the top of the peaks for your choice of nine groomed trails to test any skill level. Popular with traditional skiers as well as snowboarders, this destination offers lessons and equipment rentals for those experiencing this popular winter pastime for the first time.

North of Neepawa lies **Big Valley**; an example of glacial meltwater spillway of the last ice age. The valley is a popular recreational area for hiking and tobogganing, as you can slide down the winding valley road for minutes at a time! The area is known for its natural beauty; surrounded by birch trees, a winding spring-fed creek and shale slides. The nearby **Rosedale Farm Trail** is an all-season trail that offers stunning views to the East of the Riding Mountain Escarpment. Interpretive signage helps to explain the history and features of the farm. Also in close proximity is the **Rosburn Subdivision Trail**, which makes for a great snowmobiling route in the Winter.

The **Brandon Hills** (just a few minutes South of Brandon), have long been a haven for outdoor recreation and wildlife. With gentle rolling hills and aspen-oak parkland this beautifully forested area offers the perfect setting for nature lovers and photographers. The trail system is comprised of a variety of pathways ranging in distance from 2 km to 7.5 km. A map at the starting point outlines each loop. They are often nicknamed, the “Blue Hills of Brandon” because of their distinct colour seen from a distance in the summer time. The groomed cross-country trails are a skiers’ paradise; offering a quiet and picturesque white wonderland.

Groomed after every snowfall by the Neepawa & Area Ski Club, **Langford Winter Park’s** trails offer something for everyone! There are 10 km for classic skiing (with 5 km double tracked) and 2.5 km for skate skiing. There is also a warming cabin along the trail, toboggan hill, and 7 km of snowshoeing trails. The trails are well sheltered, passing through the woods on flat or gently rolling terrain. You will also find a tobogganing hill for the kids (and inner kid in you) for plenty of opportunity for Winter fun!

The **Manitoba Hydro Waterfall of Lights** in Brandon sets the stage for an outdoor winter venue that is decorated with beautiful light displays which provide a welcoming setting for outdoor skating at the West end of McGregor Avenue. Open seasonally from December through February depending on weather the site includes music, fire pits, warm up shacks and washroom facilities to meet the needs of all guests.

WELCOME TO  
WESTMAN



**LARRY MAGUIRE MP**  
BRANDON-SOURIS

UNIT B - 658 10TH STREET  
BRANDON, MB R7A 4G5  
LARRY.MAGUIRE@PARL.GC.CA  
204-726-7600



# prairie GATEWAY

ELKHORN VIRDEN KENTON tourism



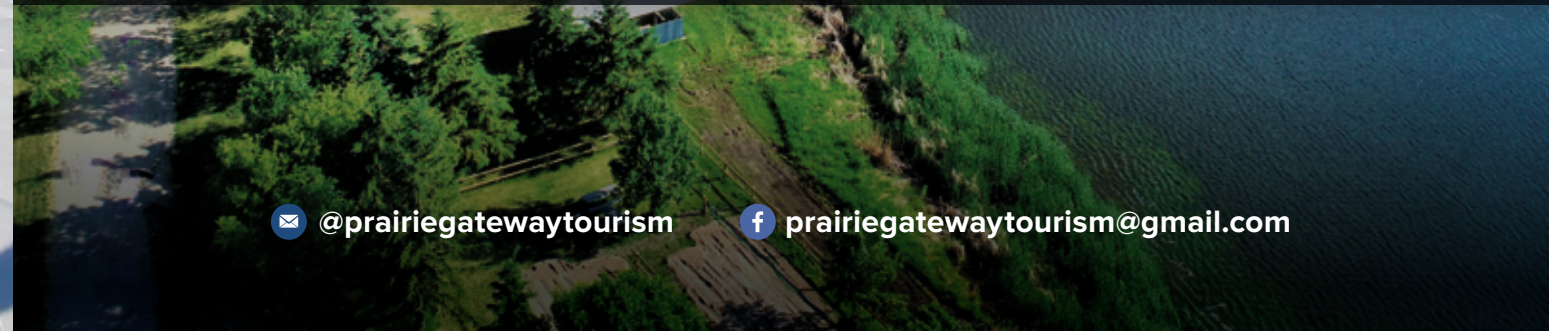
[prairiegatewaytourism.ca](http://prairiegatewaytourism.ca)

*‘Life is not measured by the number of breaths we take, but by moments that take our breath away.’*

– Maya Angelou



Snowshoeing, Shoal Lake  
©@allisonlauree



[@prairiegatewaytourism](https://www.instagram.com/prairiegatewaytourism)

[prairiegatewaytourism@gmail.com](mailto:prairiegatewaytourism@gmail.com)

MORE *than a place*  
to **REST** *your head*



Turtle Mountain Resort,  
Lake Metigoshe

When you think about a vacation getaway, one of the first questions that you want to answer is “where will I stay?” Southwestern Manitoba is home to a number of great hotel and motel facilities, including recognized national chains. However, if you’re looking to experience Manitoba hospitality in a new way, you may want to **explore one of our premier bed and breakfast destinations for your next visit.** You’re sure to enjoy surroundings that offer more than just a place to rest your head. In fact, these destinations may become a focal point of your trip.

Nestled in the Turtle Mountains adjacent to the shores of Lake Metigoshe is where you will find the **Turtle Mountain Resort**. Whether you seek a hub for a family vacation, a relaxing unplugged getaway or an adventure packed outdoor experience, Turtle Mountain Resort can be at the centre of your stay. Stay in a rustic cabin, visit the on-site licensed Velvet Antler Cafe, where they do Breakfast & Burgers right and stop by the Trading Post; a one-stop shop for all your convenience needs. Come experience the call of the wild!

On the banks of the Souris River on an idyllic old time farm enjoy the quiet country life at **Rustic Retreat**. Two unique rustic theme cabins equipped with modern conveniences. One cabin is in the heart of farm yard, the other right on the bank of the Souris river. Watch the horses graze and cats play. Birds are chirping and occasionally a rooster crows. Beautiful view of the river down the hill behind. Sit on the porch swing in the summer or by the wood fireplace in the winter. This farm is a wonderful place for a quiet weekend getaway or a large family gathering. Perfect venue for your dream wedding. Come and enjoy the prairies!

A 1914 farmhouse sitting on a prairie waterway is the setting for the **Fairmount Bed & Breakfast** located near Basswood. The site lends itself to relaxation with a close up view of area wildlife, relaxation on the back deck or in the screened sun room, and a night time view of the moon reflected on the water. The menu of food selections offer choices made on site from scratch using many ingredients grown right on the farm. The Fairmount also offers “hands on” culinary tourism packages from time to time.

Experience the best of life on the homestead with a visit to **Fraser Family Farms** near Minto. The family-operated farm features a relaxing atmosphere with fun-filled adventure for all visitors. Stay in your own cabin and enjoy hearty, home-cooked meals. Get up close and personal with animals such as goats, rabbits, horses, chickens, ducks and turkeys. Situated close to a number of area attractions at Boissevain, Killarney and Souris the farm is also a great place to stay while visiting the region.

If your vacation requires a destination that allows you to refresh and recharge, then the **Journey Home Artist Retreat** at Waldersee may be just what the doctor ordered. Offering yurt accommodation set out in the country, 45 minutes northeast of Neepawa, Journey Home offers not only packages and rates for nightly stays but also experiential packages for “Health and Wellness”, “Creative Recovery” and culinary offerings.



*oTENTik Yurts, Riding Mountain National Park; Photo Credit: Travel Manitoba*

Stay awhile at the brand-new **Farmhouse 50 Bed & Breakfast Loft!** Recently entirely renovated and updated, their bright and fresh loft style apartment is now available to book for your next stay in beautiful Minnedosa. With its sleek modern farmhouse style and all of the amenities available at your fingertips, including Farmhouse 50 restaurant & shopping right downstairs, the Farmhouse Loft is sure to please all guests.

If sustainability and your relationship to the Earth is a focus for you, then you may want to discover the **Room to Grow Guesthouse** at Boissevain. Situated on one hundred and sixty acres of organically managed woodland, you're invited to make the entire property your home during your stay. Everything from water and waste management to heating and appliances in the guest houses considers the environment. Experiential packages offered include wilderness skills, organic farming, as well as orientation in medicinal and culinary herbs at their on-site greenhouse.

**SH**  
Souris Hotel

29 Rooms

2 Queen Standard Room

Pet Friendly Room

Executive Suite

**Ammenities include:**

- Fridge
- Microwaves
- Keurig Coffee Maker
- Breakfast
- Elevator
- 2 TV's

**GM: Darlene Janssen**  
E: gmsourishotel@gmail.com  
PH: 204-483-3373  
Souris Manitoba

**Days Inn & Suites**  
BY WYNDHAM  
BRANDON

**FREE HOT BREAKFAST**

◆

**FREE WI-FI**

◆

**EXTENDED STAY SUITES**

◆

**PET FRIENDLY HOTEL**

◆

**SWIMMING POOL**

2130 Currie Blvd.  
Brandon, MB  
R7B 4E7 | 204.727.3600

[www.days-inn-brandon.com](http://www.days-inn-brandon.com)

**MELITA**  
MANITOBA

*Come See everything Melita has to offer!*

Entertainment, Shopping,  
Restaurants & So Much More!

204-522-3413  
MelitaMB.ca

**Comfort**  
INN & SUITES

- Pool/Waterslide
- Exercise room
- Wi-fi
- Free hot breakfast
- 60 guest rooms
- Meeting room

**FOR RESERVATIONS  
CALL (204) 707-6020**

**380 FRONTAGE ROAD WEST  
VIRDEN, MB**

**S&T SUPER THRIFTY**  
LOCALLY OWNED WE CARE... Your Family Drug Store

- ✓ board games
- ✓ cards & gift cards
- ✓ giftware & toys
- ✓ women's fashions
- ✓ children's clothing
- ✓ health & beauty
- ✓ pharmacy

**OPEN**

Monday to Friday  
9:00am to 5:30pm

Closed noon to 1 daily

FIND US AT [www.superthrifty.com](http://www.superthrifty.com)

Hamiota, Manitoba 204-764-2140



*Fairmount Bed & Breakfast, Minnedosa*

# HOTELS & MOTELS LISTING

NAME & CONTACT DETAILS (Alphabetically by name)	NUMBER OF UNITS	RATES	RESTAURANT: L-LICENSED; U-UNLICENSED	POOL: I - INDOOR, O - OUTDOOR	CONVENTION / BANQUET FACILITIES	SMALL PETS PERMITTED	ROOM SERVICE
<b>Canad Inns Destination Centre</b> Brandon · 204-727-1422	159	\$129 – \$299	L	I	•	•	•
<b>Canadian Wilderness Inn</b> Boissevain · 1-877-534-7155 Deloraine · 204-747-3300 Killarney · 204-523-4111	50	\$110 – \$130				•	
<b>Carberry Motor Inn &amp; Restaurant</b> Carberry · (204) 834-2855	21	\$50	L			•	
<b>Colonial Inn</b> Brandon · 204-728-8532	87	\$72 – \$110	U	I	•	•	
<b>Comfort Inn</b> Brandon · 204-727-6232	81	\$80 – \$150				•	
<b>Comfort Inn &amp; Suites</b> Virden · 204-707-6020	60	\$135 – \$189		I			
<b>Days Inn &amp; Suites</b> Brandon · 204-727-3600	76	\$95 – \$185		I	•	•	
<b>Desjard-Inn &amp; Suites</b> Birtle · 204-842-3889	8	\$89 – \$109				•	•
<b>Elkhorn Resort</b> Onanole · 204-848-2802	57 Rooms 64 Chalets	\$129 – \$299	L	I	•	•	•
<b>Gladstone Hotel</b> Gladstone · 204-385-2770	7	\$75	L			•	
<b>Jays Inn &amp; Suites</b> Virden · 1-888-720-7225	40	\$115 – \$180			•		
<b>Keystone Motor Inn</b> Brandon · 204-728-6620	41	\$80 – \$100	L			•	
<b>Lakeview Inn &amp; Suites</b> Brandon · 204-728-1880	66	\$106 – \$165		I	•		
<b>Redwood Motor Inn</b> Brandon · 204-728-2200	61	\$62 – \$79		I		•	
<b>Royal Oak Inn &amp; Suites</b> Brandon · 204-728-5775	156	\$125 – \$199	L	I	•	•	•
<b>Spruce Woods Inn</b> Glenboro · 204-827-2648	13	\$55 – \$65	L				•
<b>The Souris Hotel</b> Souris · 204-483-3373	29	\$110 – \$165				•	
<b>Victoria Inn</b> Brandon · 204-725-1532	131	\$125 – \$199	L	I	•	•	•

# B&Bs & CABIN/GUESTHOUSE LISTING

NAME & CONTACT DETAILS (Alphabetically by name)	BEDROOMS	SINGLE OCCUPANCY RATES	DOUBLE OCCUPANCY RATES	CABIN/ GUESTHOUSE RATES	AIR-CONDITIONING	NO SMOKING	PETS PERMITTED	BATHROOM SB = SHARED BATH PB = PRIVATE BATH
<b>Aggie's Guesthouse</b> Carberry · 204-720-0097	4	Upon Request	\$80	\$80	•	•		PB
<b>Belmont Bed &amp; Breakfast</b> Belmont · 204-537-2389	2	\$55	\$60	N/A	•	•		SB
<b>Cottonwood Acres Bed &amp; Breakfast</b> Shilo · 204-763-4950	3	\$75	\$85	N/A	•	•		SB
<b>Country Comfort Bed &amp; Breakfast</b> Killarney · 204-523-8742	4	\$60	\$80	N/A	•	•		SB
<b>Cozy River Inn Bed &amp; Breakfast</b> Rivers · 204-328-4457	2	Upon Request	Upon Request	N/A	•	•	•	PB
<b>Fairmount Bed &amp; Breakfast</b> Minnedosa · 204-874-2165	3	\$70	\$90	N/A	•	•		PB & SB
<b>Farmhouse 50 Bed &amp; Breakfast Loft</b> Minnedosa · 204-867-2292	1	\$109	\$109	\$109	•	•		PB
<b>Fraser Family Farms Bed &amp; Breakfast</b> Minto · 204-776-2176	1	\$75	\$95	N/A	•	•		PB
<b>Hampton B&amp;B</b> MacGregor · 204-685-3199	3	\$79	\$99 – \$109	N/A	•	•		SB
<b>Journey Home Artist Retreat</b> Waldersee · 204-352-4096	2	\$150+	\$150+	\$150+		•		PB
<b>Kruk Castle Bed &amp; Breakfast</b> Minnedosa · 204-867-2292	5	\$109 – \$155	\$109 – \$155	\$180	•	•		PB & SB
<b>Rustic Retreat</b> Souris · 204-734-4905	5	\$120+	\$75+	N/A				PB
<b>Silver Springs Bed &amp; Breakfast</b> Pilot Mound · 204-825-2961	3	\$65+	\$75+	N/A	•	•		SB
<b>The Garden Path Bed &amp; Breakfast</b> Neepawa · 204-476-3477	3	\$70 – \$80	\$80 – \$90	N/A		•		PB & SB
<b>The Guest Room</b> Souris · 204-483-3246	2	\$89 – \$99	\$89 – \$99	N/A	•	•	Upon Request	PB
<b>The Gulls Rest Bed &amp; Breakfast</b> Minnedosa · 204-380-4432	1	\$89	–	N/A	•	•		PB
<b>Turtle Mountain Resort</b> Lake Metigoshe · 204-747-3919	5	\$110	\$120	N/A	•	•	•	PB

\* All of the mentioned Hotels, Motels, B&Bs, Cabin/Guesthouse listings are members and/or paid advertisers. For a complete listing of all accommodations available in the region, please refer to [www.tourismwestman.ca](http://www.tourismwestman.ca) or the Travel Manitoba Vacation & Accommodation Guide.

# Reel in a TROPHY CATCH

Adam Lake © @misbeylairwasiuk



Pelican Lake

Southwest Manitoba is a popular destination for anglers from across Canada and the United States, owing to our plentiful lakes and wide variety of more than 20 species of fish that populate our lakes and waterways. But the great treat in Manitoba is that fishing isn't restricted only to fair weather seasons. When the rivers and lakes freeze over, the surfaces populate with a seasonal community of ice shacks as hardy fishing enthusiasts brave the elements with hopes of catching the big one.

Check out this list of 22 popular fishing destinations (page 88) and the game that you can hope to catch on your next outing.

Main: Riverside Park, Birtle

# FISHING LISTING

## **Assiniboine River**

Burbot, Channel Catfish, Freshwater Drum, Goldeye, Northern Pike, Perch, Sturgeon, Walleye

## **Birdtail River**

Northern Pike

## **Boissevain Reservoir**

Northern Pike, Perch, Walleye

## **Bower Lake**

Rainbow Trout

## **Elgin Reservoir**

Bullhead, Brown Trout, Northern Pike, Perch, Walleye

## **George Lake**

Smallmouth Bass, Northern & Yellow Pike, Whitefish

## **Killarney Lake**

Bullhead, Northern Pike, Walleye, Yellow Perch

## **Lake Irwin**

Carp, Northern Pike, Walleye

## **Lake Metigoshe**

Black Crappie, Bluegills, Bullhead, Catfish, Northern Pike, Perch, Walleye

## **Max Lake**

Northern Pike, Perch, Walleye

## **Minnedosa Lake**

Northern Pike, Perch, Walleye

## **Oak Lake**

Northern Pike, Perch, Smallmouth Bass, Walleye

## **Pelican Lake**

Carp, Northern Pike, Perch, Walleye

## **Rock Lake**

Carp, Channel Catfish, Northern Pike, Perch, Walleye

## **Sandy Lake**

Northern Pike, Perch, Walleye

## **Little Saskatchewan River**

Burbot, Goldeye, Northern Pike, Perch, Sturgeon, Walleye, Whitefish

## **Shoal Lake**

Northern Pike, Perch, Smallmouth Bass, Walleye

## **Souris River**

Bullhead, Channel Catfish, Northern Pike, Perch, Walleye

## **Turtle Head Dam (Deloraine Reservoir)**

Perch, Northern Pike, Walleye, Smallmouth Bass

## **Lake Wahtopanah (Rivers Reservoir)**

Northern Pike, Perch, Rock Bass, Walleye

## **Whitemud River**

Freshwater Drum, Northern Pike, Perch, Walleye

## **William Lake**

Brown Trout, Perch, Smallmouth Bass

*\* A Manitoba fishing license is required*



PROTECT MANITOBA'S WATERS AND RESOURCES

# STOP AQUATIC INVASIVE SPECIES



**Don't give zebra  
mussels a free  
ride to a new  
water body.**

Always clean, drain, dry  
and if necessary, dispose  
and decontaminate.

Learn how at  
**[manitoba.ca/StopAIS](http://manitoba.ca/StopAIS)**  
or call toll free  
**1-87-STOP AIS-0**  
**(1-877-867-2470)**

**Manitoba** 



# Still Growing!



HOPYARDS

BARLEY FIELDS



## Canada's Original Estate Brewery

For beer & gift sales, visit our Craft Beer Store in Neepawa, or order online [Farmery.ca](http://Farmery.ca)!

# MAP of Manitoba's SOUTHWEST



**DISTANCE REFERENCE**

Brandon to Winnipeg	..... 220 km / 138 miles
Brandon to US Border	..... 100 km / 60 miles
Brandon to Virden	..... 75 km / 47 miles
Brandon to Riding Mountain	..... 100 km / 60 miles

FOR INFORMATION ON MANITOBA'S PARKLAND  
CALL 1-888-528-6484 or visit  
[www.parklandtourism.ca](http://www.parklandtourism.ca)

FOR INFORMATION ON CENTRAL PLAINS TOURISM  
CALL 1-877-856-5002 or visit  
[www.echoesandlegends.com](http://www.echoesandlegends.com)

FOR INFORMATION ON PARKS ROUTE (HWY #5)  
[www.parksroute.ca](http://www.parksroute.ca)

**LEGEND**

**PROVINCIAL TRUNK HIGHWAYS**

- Multilane.....
- 2 Lane, Paved.....
- Gravel.....

**PROVINCIAL ROADS**

- 2 Lane, Paved.....
- Gravel.....
- Other Roads.....

Trans Canada Highway Provincial Trunk Highway

Yellowhead Route Provincial Road

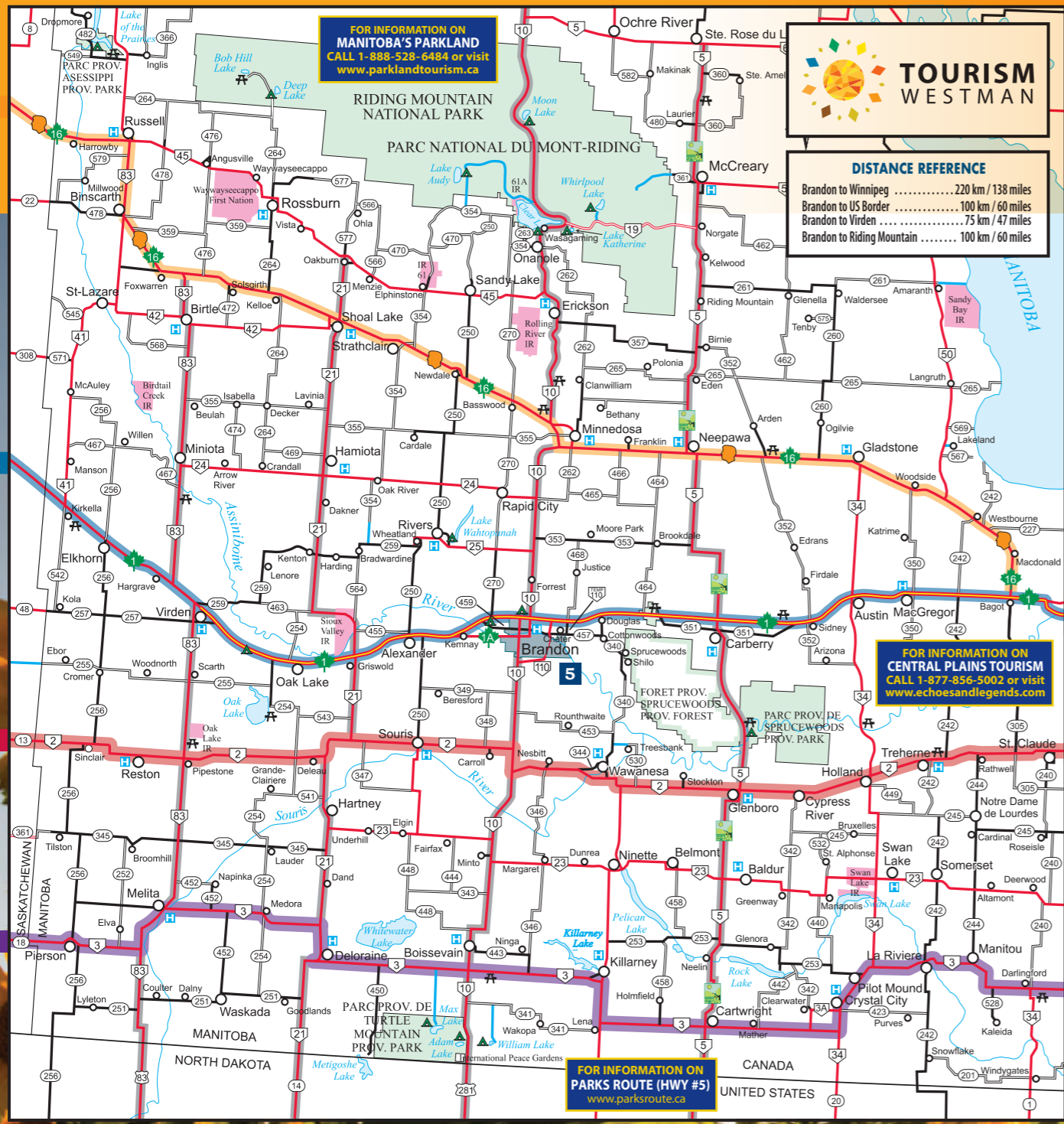
Parks Route

**SYMBOLS**

- Campsite.....
- Government Picnic Site / Wayside Park.....
- Hospital.....

0 5 10 15 20 25  
kilometres

- 1** BOUNDARY TRAIL HIGHWAY #3
- 2** RED COAT TRAIL HIGHWAY #2
- 3** TRANS CANADA HIGHWAY HIGHWAY #1
- 4** YELLOWHEAD HIGHWAY HIGHWAY #16
- 5** CITY OF BRANDON
- MAJOR NORTH/SOUTH ROUTES



*It's Time Fashion & Gifts, Neepawa*