

Control Center

Divar Series



BOSCH

en Operation manual

Table of Contents

1	Introduction	5
1.1	Getting started	5
1.2	System requirements	5
1.2.1	Software installation	5
1.2.2	Firmware upgrades	6
1.2.3	Conventions used in the application	6
2	Live operation	7
2.1	How to Log on	7
2.2	Live video window	8
2.3	Top button bar	9
2.3.1	Live button for multiple Divar units	9
2.3.2	Playback button for single Divar	9
2.3.3	Camera views	9
2.3.4	Capturing a still image	10
2.3.5	Instant playback	10
2.3.6	Audio	10
2.3.7	Config button	10
2.3.8	Monitor stream mode	10
2.3.9	Help button	11
2.3.10	Log off button	11
2.4	Selecting Divar units, cameras, groups, and views	11
2.4.1	Context menu	12
2.4.2	Drop-down menu	12
2.4.3	System Management icons	12
2.4.4	Managing groups	12
2.4.5	Making views	13
2.5	Checking alarms and motion events	13
2.6	Checking status information	14
2.7	Assigning cameras to cameos	14
2.7.1	Cameo icons	15
2.8	Controlling cameras	15
2.9	Activating output relays	16
3	Playback operation	17
3.1	Playback window	17
3.2	Top button bar	18
3.2.1	Selecting single or multiscreen views	18
3.2.2	Text unit	18
3.2.3	Capturing a still image	18
3.2.4	Selecting viewing window size	18
3.2.5	Audio	18
3.3	Selecting a camera	19
3.4	Using the playback controls	19
3.5	Overview tab	20
3.5.1	Earliest and latest recording times	20

3.5.2	Date and time of selected image area	20
3.5.3	Time line scale	20
3.5.4	Time line display	20
3.5.5	Date/time axis	20
3.5.6	Selecting recordings	21
3.5.7	Disk Space usage (Divar Classic only)	21
3.6	Search tab	21
3.6.1	Oldest and newest recording times	21
3.6.2	Setting the search period	22
3.6.3	Go to function	22
3.6.4	Camera selection	22
3.6.5	Event filter	22
3.6.6	Start search	22
3.6.7	Search results	22
3.7	Smart Motion tab	23
3.7.1	Oldest and newest recording times	23
3.7.2	Setting the search period	23
3.7.3	Go to function	23
3.7.4	Camera selection	23
3.7.5	Search direction	24
3.7.6	Sensitivity	24
3.7.7	Smart Motion tab	24
3.7.8	Show grid	24
3.7.9	Start search	24
3.7.10	Search results	24
3.8	Text tab	25
3.8.1	Oldest and newest recording times	25
3.8.2	Setting the search period	25
3.8.3	Go to function	25
3.8.4	Camera selection	25
3.8.5	Free text data search	26
3.8.6	Case sensitive search	26
3.8.7	Search results	26
3.9	Protected tab (Divar Classic only)	26
3.9.1	Oldest and newest recording times	26
3.9.2	Disk space used	27
3.9.3	Setting the search period	27
3.9.4	Searching for protected recordings	27
3.9.5	Search results	27
3.10	Handling recordings	27
3.10.1	Checking authenticity	27
3.10.2	Exporting recordings to a PC hard disk	28
3.10.3	Deleting recordings	28
3.10.4	Protecting recordings (Divar Classic only)	28
3.10.5	Unprotecting recordings (Divar Classic only)	28

1 Introduction

1.1 Getting started

The Divar Control Center gives full remote control via a PC of the Divar 700 Series, Divar XF and Divar Classic DVRs. Any Divar connected to the network can be controlled and multiple-user access is available for up to eight users (five simultaneously). Multiple Divar units can be controlled simultaneously.

Remote live viewing, search, playback, and system configuration are provided (if permissions have been granted). Remote control functions include pan, tilt, and zoom control of cameras (including full AutoDome control), and video archiving. An on-line status overview of the connected units is also provided.

Access to the Configuration Tool to set up a Divar is limited and can be password protected. The functions available to each remote user can also be restricted, for example, the ability to archive video. See the relevant Divar user manual for more information. Search and playback functions can be blocked, so it is possible they are not directly available. All possible operator facilities are described in this manual but some of these may not be available to every user or on every model or unit.

The Archive Player is provided so that archived video recordings can be viewed on any reasonably current Windows PC without requiring additional installation. All recordings have an authentication code embedded in them. This makes it possible to check their authenticity to ensure that they have not been tampered with.

1.2 System requirements

Operating platform: A PC running Windows XP or Windows Vista.

For the Control Center and Archive Player, the **recommended** PC requirements are:

- Processor: Intel Pentium DualCore, 3.0 GHz or comparable
- RAM memory: 2048 MB
- Free hard disk space: 10 GB
- Graphics card: NVIDIA GeForce 8600 or higher
- Video memory: 256 MB
- Network interface: 10/100-BaseT

Note:

For each camera that is viewed on Control Center, 9 MB of video memory is reserved. If there is insufficient video memory to display a multiscreen view, a warning message is shown and the multiscreen is not displayed.

1.2.1 Software installation

1. Insert the CD-ROM into the CD-ROM drive of the PC;
 - The installation program should start automatically.
2. If installation does not start automatically, locate the **Setup.exe** file on the CD and double-click it.
3. Follow the instructions on the screen to complete the installation.

Starting the program

When installation is complete, double-click the Divar Control Center icon on the desktop window to start the program. Alternatively, select the Divar Control Center program via the

Start button on the task bar and the Programs menu.

1.2.2 Firmware upgrades

Firmware upgrades are released periodically. Check the Bosch Security website for the latest version.

Note:

Whenever the Control Center application is upgraded to a newer software version, any saved configuration backup file exported from the older version of the software will no longer be useable with the new software. During the upgrade process, the existing configuration of the Control Center will be adapted to the new version of the software. Re-export the configuration to a new backup file to ensure that a backup configuration file can be restored using the new software.

1.2.3 Conventions used in the application

Interpreting icon colors

- Disabled functions are shaded.
- Active selections are highlighted in yellow or when in pressed state.

Calendar window

The calendar window is displayed after clicking the calendar icon in windows where a date must be filled in.

- Click the arrow keys to change months.
- Click a date to return to the date box with the selected value filled in.
- Press **Esc** on the keyboard to leave the window without changing the date.

Lists

- In lists, click a column header to sort the list according to that column item.
- Click a second time to sort the list in reverse order.
- Use the scroll bars to scroll through long lists.

Progress bar

- A progress bar is displayed when a task is running that takes some time to complete.
- Click **Cancel** to stop the task.

Confirmation window

A confirmation window is displayed when an irreversible operation is selected.

- Click **Yes** to proceed with the operation.
- Click **Cancel** to abandon the operation.

Error window

An error window is displayed whenever an error occurs:

- Click **OK** to dismiss the error notification.

Refresh

Update of values and status indications.

Expand/collapse lists

In the System Management window, the tree structure shows a + or a - next to an icon. Click the + to expand the list; click the - to collapse the list.

2 Live operation

2.1 How to Log on

When the Control Center application is started for the first time, the user name and password boxes are blank. The device list is also empty. One or more Divar units must first be added to the list.

Click **Edit** to add a Divar to the list.

To modify the Divar list

Add or delete Divar units from the list using the **Edit Divar list** window. Change the name and IP address of a selected unit here as well.

To automatically detect all enabled Divar units on the network:

1. Click **Detect**;
 - To detect a unit, Discovery must be enabled (in the local user interface) on that unit.
2. Select the unit(s) to be added.
3. Click **OK** to add the selected unit(s) to the list.

To manually add a Divar to the list:

1. Click **Add**.
2. Enter the IP address or DNS name of the new unit;
 - The IP address to be filled in is set in the setup menu of the unit itself. Check with the administrator for access to the unit, if needed.
3. Type a name in the Name box or retrieve it from the unit by checking the **Retrieve from Divar** box.
4. Click **OK**.

To delete a Divar from the list:

1. Select the unit to be deleted.
2. Click **Delete**;
 - The selected unit is removed from the list.

Log on

Start the Control Center application, the **Log on** window appears. (Click **Cancel** to discontinue log on and exit the application.)

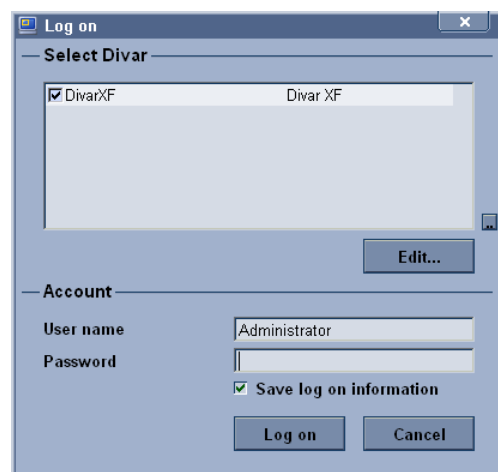



Figure 2.1 Log on window showing Divar list

To log on to a particular Divar:

1. Select the units to log on to by placing check marks next to them:
 - Click  to select either all or none of the units listed.
 - If a login group has been defined, select this group to log on to the units listed in the group.
2. Type user name and password:
 - The user name and password to be filled-in are set in the unit itself. Check with the administrator if access is denied to the unit.
 - Place a check mark in the **Save log on information** box to let the system remember the name and password on subsequent uses of the Control Center. Administrator passwords are not saved.
3. Click **Log on**.

2.2 Live video window

The live video window appears upon log in. This is the main window.

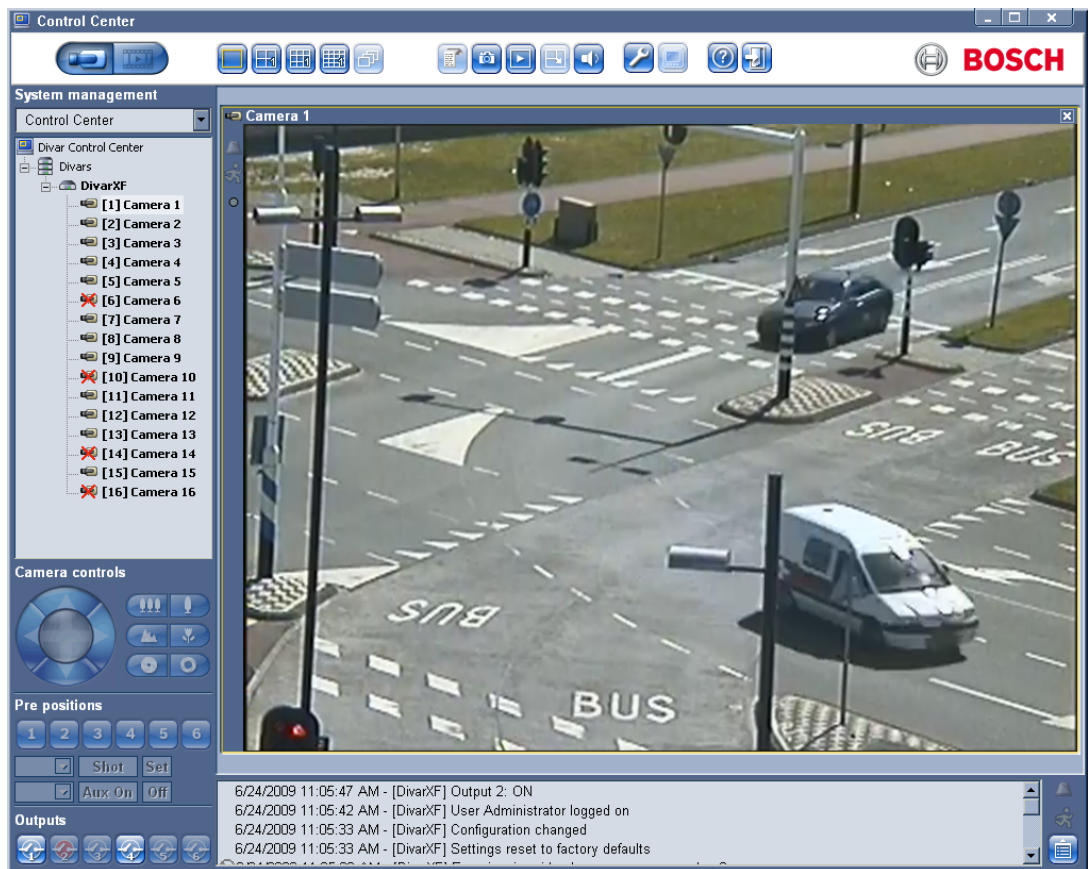




Figure 2.2 Live video window

The main window consists of five areas:

- A horizontal top button bar, containing buttons for screen control and system settings.
- A vertical side bar, containing controls for system management, camera control, and relay control.
- A video area, showing live video from one or more cameras and Divar units.
- A status message window, showing live status information from all connected DVRs.
- Status window button, and alarm and motion icons.


The Control Center  icon in the top left of the window allows the user to manipulate the window size, close the application, or select system settings.

To change the system settings:

1. Click the Control Center  icon and select **Settings...**
 - The system settings dialog window opens.
2. Place a check mark next to the items to be activated;
 - The computer beeps on the specified alarms or maximizes the application window.
3. Select a sequence dwell time between 5 and 60 seconds to determine how long a sequenced view remains displayed.
4. Click **OK** to save changes and close or **Cancel** to close the window without change.


2.3 Top button bar

2.3.1 Live button for multiple Divar units


The live video window is shown by clicking **Live** . On this screen the user can:

- view live video
- select different multiscreen displays
- assign cameras to cameos
- open an instant playback window of the active cameo
- take a snapshot of the active cameo
- control cameras
- monitor unit status and alarm conditions
- log in to other units on the network
- set up logical groups and views


2.3.2 Playback button for single Divar

Click **Playback**  to show the playback window. Get a graphical timeline overview of all recordings, or search for recordings based on events and play them back.

2.3.3 Camera views

To switch the display mode, click one of the camera view  icons to change the cameo display configuration:


- Single, Quad, 3x3, and 4x4 multi-image display modes are available.

To select the sequence mode, click the sequence  icon to start sequencing through a list of cameras:


- If a group is selected in the **System Management** window, the Control Center sequences through all direct members of that group (including subgroups).
- If a view or camera is selected in the **System Management** window, the Control Center selects that item and sequencing is not possible.
- If a Divar is selected in the **System Management** window, the Control Center sequences through all cameras on that unit in single mode.
- The Control Center uses the dwell time set in the Control Center system settings.

To select multiple items, extend the selection by holding down the **ctrl** key while selecting additional items.

Multiscreen views

Dependent on the number of supported video inputs, multiple multiscreen views are available. The current view is indicated by a number in the multiscreen  icon.

Each multiscreen view can have unique camera-to-cameo assignments:



- To manually cycle through the available views, click the multiscreen  icon.

2.3.4

Capturing a still image

Capture still images from the fullscreen display of a camera and save them to the PC hard disk in a bitmap format.

To save an image from the active cameo to the PC hard disk:


1. Click the single  icon to view the images from one camera.
2. Click the snapshot  icon;
 - The Snapshot pop-up page appears.
3. To change the default location, type the path in the PC file system to store the image file.
4. To change the file name, type the new name for the file.
5. Click **Save**.

The snapshot has the same resolution as the video image (CIF, 2CIF, or 4CIF, depending on the recording settings). Authentication information is shown under the image.

2.3.5

Instant playback


To view the recorded video of a particular camera from one minute earlier:

1. Click the cameo of the camera that contains the video to make it active.
2. Click the **Instant Playback**  icon;
 - A new window opens which plays back the recorded video of this camera from one minute earlier.
 - Use the buttons at the bottom of the instant playback window to control playback or take a snapshot.
 - Click the close button at the top right corner of the instant playback window to close it.

An alternative method of opening the instant playback window is to right click a camera in the **System Management** window and select **Instant Playback**.


2.3.6

Audio

Click **audio**  to enable or disable audio streaming or adjust the volume. When enabled, the audio of the selected cameo will be heard, if available.


2.3.7

Config button

Click **Config**  to start the configuration tool program. This allows set up of all the configuration settings for supported devices. A log on dialog box is opened with known devices for which a configuration tool is installed. An alternative method of starting the Configuration Tool is to right-click a DVR in the **System management** window and select **Configure**. Configuration rights are needed to access this program.

2.3.8

Monitor stream mode

Click  to enable direct DVR control while viewing a monitor streaming channel. While active, the viewing modes directly control what is displayed on the monitor output.

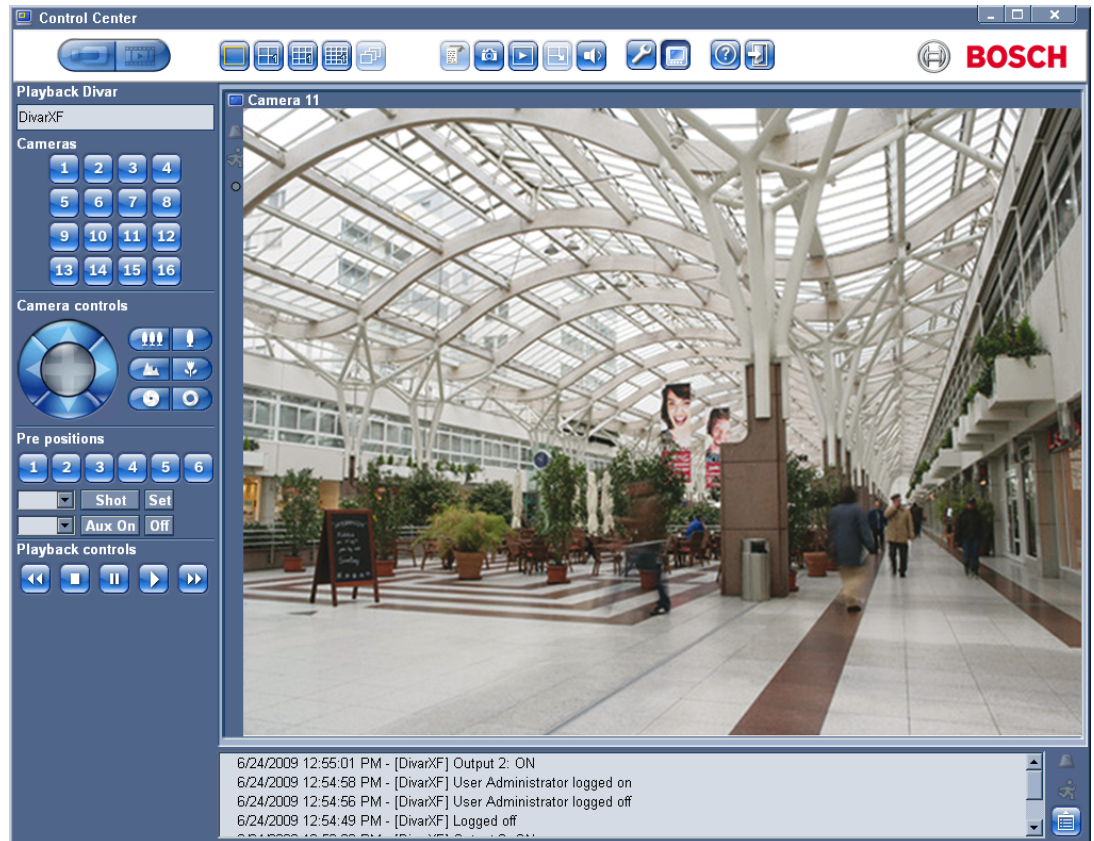




Figure 2.3 Monitor streaming window

2.3.9 Help button

Click **Help**  any time to get help on any topic. A pop-up help window appears.

2.3.10 Log off button

Click **Log off**  to disconnect from the connected unit(s). The log on screen appears. Choose to connect to a different unit or click **Cancel** to exit the program completely.

2.4 Selecting Divar units, cameras, groups, and views

In live mode, use the **System Management** window to select a Divar and open a list of connected cameras, or to set up groups of cameras and views and to recall them. These items are presented in a tree structure. Click + to expand a list, click - to collapse a list.



Figure 2.4 System management window

2.4.1 Context menu

Right click an item in the tree to open a task menu:

- Place a check mark next to **Show Login Groups** or **Show Logical Groups** to see these items in the tree structure.
- Save a new tree structure to a file (**Save System Tree**).
- Load a saved tree structure to disk (**Load System Tree**).
- Make new groups and views, rename them or delete them (see *Section 2.4.4 Managing groups, page 12*).
- Copy logical groups (**Save as . . .**).
- Log in to or log off from a connected Divar or an entire group of Divar DVRs.
- Configure a particular unit.
- Acknowledge alarms on a particular unit.
- Start instant playback on a camera.
- View the properties of the selected Divar, camera, or camera view.

2.4.2 Drop-down menu

To jump directly to a top level group, use the drop-down selection box to select a group from the list (ensure that **Show Logical Groups** is selected in the task menu).

2.4.3 System Management icons



Available Divar DVRs - contains a list of all units defined on the network.



Individual units - name shown in **bold** if logged in.



Available cameras - shows camera inputs available on a unit. Connected camera names are displayed in **bold**.



Controllable cameras - shows controllable cameras connected to the unit.



Monitor streaming channel - shows camera inputs used for monitor streaming.



Groups - identifies a group.



Views - identifies a view.

2.4.4 Managing groups

A group is used to make a logical set of Divar DVRs, cameras, or views that can easily be recalled; for example, all Divar DVRs at a specific building, or all cameras on one floor of a building. Groups can be nested and arranged for immediate recall of a logically named set. Views are placed under groups.

To make a new group:

1. Select the position in the tree where the new group is to appear;
 - Select the root icon to create a top level group.
 - A new group can also be nested under an existing group.
2. Right click the tree item and select **Add Group**
3. Enter a name for the new group.
4. Repeat this procedure to add more groups.
5. Drag and drop the Divar DVRs, cameras, and views wanted in that group.

To delete a group:

1. Select the group to be deleted.
2. Right click the group and select **Delete**
 - All subgroups and views under this group are also deleted.

To copy a group:




1. Select the group to be copied.
2. Right click the group and select **Save as . . .**
 - Enter a new name for the group.

2.4.5

Making views

A view is a collection of camera-to-cameo assignments that can be recalled for instant live viewing. A view is always located under a group. Camera views can be grouped in a logical way; for example, all cameras showing the entrances to a building.

To make a view:




1. Click one of the camera view    icons to select a multiscreen view.
2. Assign cameras to the cameos;
 - The cameras can be connected to different units.
3. Select the group from the System Management tree where the new view is to be stored.
4. Right click a group and select **Add View**.
5. Enter a name for the new view.
6. To recall a particular cameo display, click on the view name.

2.5

Checking alarms and motion events

An alarm condition causes the computer to beep or the Control Center window to pop-up when minimized, if these features are set in the **Systems settings** menu. Inspect the relevant video before acknowledging an alarm. A Divar can be set to auto-acknowledge an alarm so that the user does not have to respond to it.

Acknowledging an input or video loss alarm

1. When an alarm occurs, the alarm  icon flashes.
 - To acknowledge a single alarm, double-click the alarm message in the status message area.
 - To acknowledge all alarms associated with a single Divar unit, right-click on a unit in the **System Management** tree and select **Acknowledge**.
 - To acknowledge all alarms of all connected Divar units, double-click the flashing alarm  icon on the bottom right of the screen.
2. When all alarms are acknowledged, the alarm icon goes back to its inactive  state.


Locating an alarm

A small alarm icon is placed in front of a Divar and a status message appears to help identify where the alarm is occurring. A slightly bigger alarm icon is shown on the cameo of the camera icon in-alarm mode.

Motion events

The motion  icon flashes when motion is detected.

2.6 Checking status information

The status message window at the bottom of the screen provides status messages from all connected units, including input alarms and motion events. Click  to enlarge or to collapse the status message window.

2.7 Assigning cameras to cameos

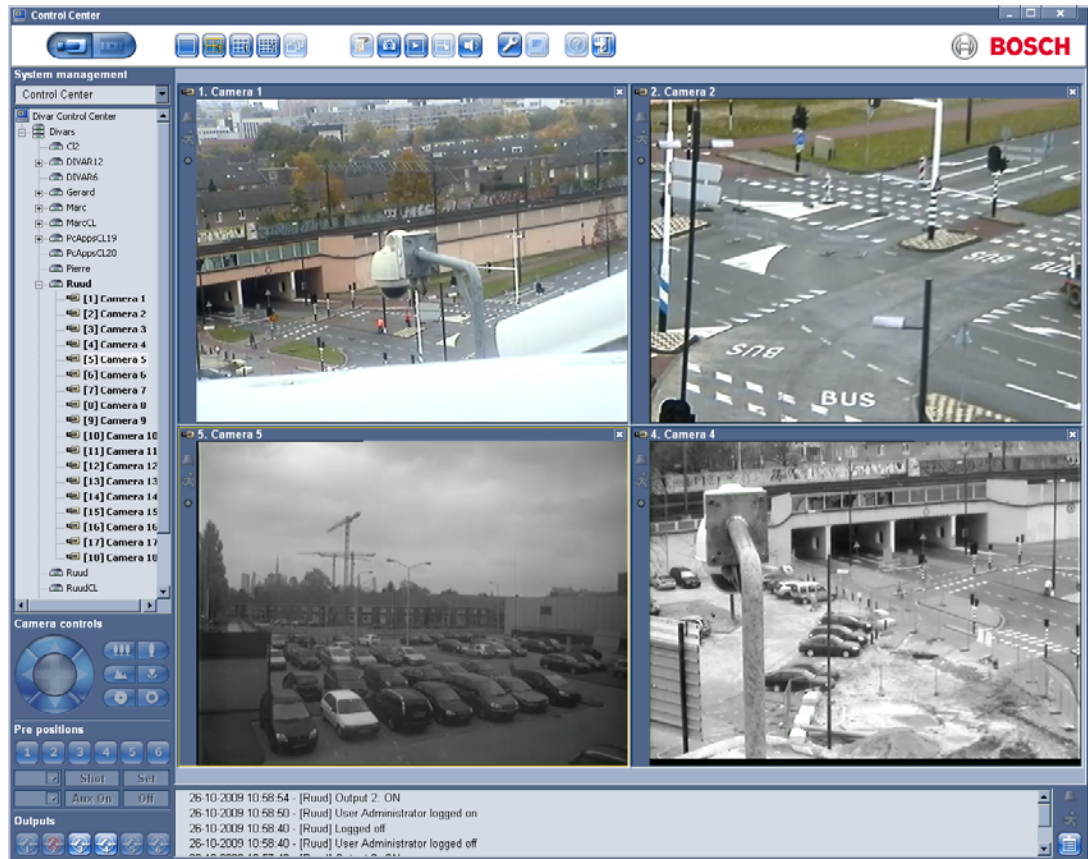



Figure 2.5 Live video window - assigning cameras to cameos

A cameo is a single camera picture in a multiscreen display. A camera picture can only be shown in one cameo at a time.

To assign a camera to a cameo, click one of the camera view  icons to select a multiscreen view.

1. Click on a Divar;
 - Log in if necessary.
2. Click the + beside the unit name;
 - A list of connected cameras appears.
3. Click the cameo where that camera picture is to be shown;
 - A yellow border appears around the cameo.
4. Double-click a camera;
 - The camera picture appears in the cameo.

Alternatively, drag and drop cameras into cameo positions.

Click **Remove**  to undo a camera assignment to the active cameo.

- The cameo is blank when the camera assignment is removed.

2.7.1

Cameo icons

Each cameo contains three status icons, as shown below:



Alarm - camera is in alarm mode



Motion - motion is detected



Frame loss- frame loss is detected due to insufficient bandwidth

2.8

Controlling cameras

A user can control controllable cameras by using the mouse on the cameo of the camera or by using the icons displayed under **Camera Controls**.

Using the mouse to do in-window pan, tilt, and zoom

1. Click the cameo of the camera to make it active;
 - It must be a controllable camera.
2. Place the pointer on the active cameo (not in the center);
 - The pointer arrow indicates the direction in which the camera will move.
3. Click and hold the left mouse button;
 - The camera moves in the direction indicated.
 - Release the button when the camera is positioned.
4. Alternatively, drag the pointer in the desired direction to move the camera;
 - Move the pointer horizontally to pan the camera and vertically to tilt the camera.
5. Use the mouse scroll wheel to zoom in or out.

Pan and tilt speed depends on the position of the pointer on the cameo. Click closer to the edge of the cameo to increase the speed; click closer to the center to decrease the speed.

Pan and tilt



1. Select the cameo of the camera to be controlled.
2. Click and hold the up and down arrows for tilt.
3. Click and hold the left and right arrows to pan.
4. The speed will increase gradually as the arrow is pressed.
5. Release the mouse button to stop camera movement controls.

Zoom, Focus, and Iris



1. Select the cameo of the camera to be controlled.
2. Click and hold the left zoom button to zoom out; click and hold the right zoom button to zoom in.
3. Click and hold the left focus button for far focus; click and hold the right focus button for near focus.
4. Click and hold the left iris button to close the iris; click and hold the right iris button to open the iris.
5. Release the mouse button to stop camera adjustment controls.

Moving a camera to a pre-position



To move the active camera to a pre-position:

1. Enter a pre-position number using the keyboard.
2. Click **Shot** (or press enter).

Click buttons one to six for immediate positioning to one of the first six pre-positions.

To store the current position of the camera in a pre-position:

1. Position the camera.
2. Enter a pre-position number.
3. Click **Set**.


Aux functions

Aux commands are special commands for controlling cameras. To switch on the Aux command:

1. Enter an Aux number.
2. Click **Aux On** (or press enter).
3. To switch off the Aux command, click **Off**.

2.9

Activating output relays

There are six numbered positions  that can be assigned to the output relays of the connected Divar units. Place the pointer over one of these six buttons to discover which unit and relay it controls, shown in the message balloon.

To assign a numbered button to a relay:


1. Right click one of the numbered **Output** buttons.
 - The configuration window opens.
2. Select a unit from the list.
 - Only the output relays that are not assigned to a specific function on that unit can be selected.
3. Select a relay for that unit.

To activate a relay:

1. Click one of the numbered **Output** buttons to activate or deactivate the output relay.
 - A red button indicates an active output.
 - A blue button indicates an inactive output.

3 Playback operation

3.1 Playback window

Click **Playback**  to show the playback window.

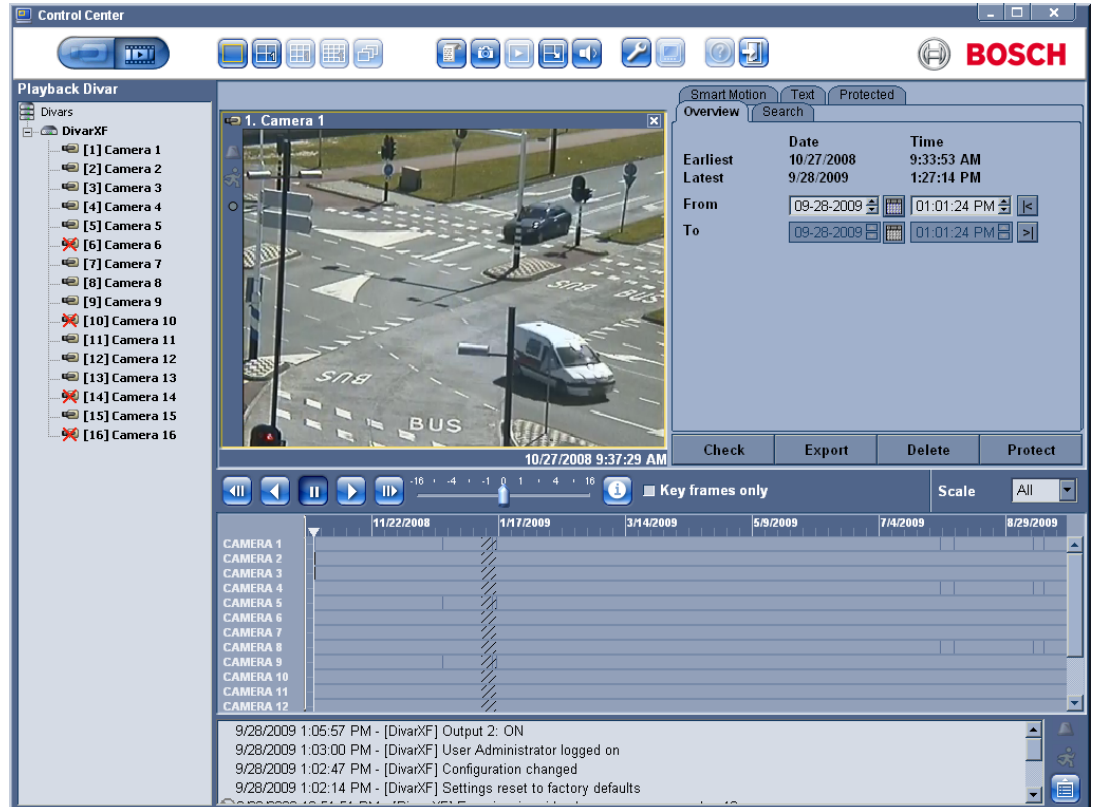


Figure 3.1 Playback window - Overview tab

The playback window has five tabs:

- The **Overview** tab gives a graphical overview of the video stored on the unit.
- The **Search** tab allows a search for recordings based on alarm and motion events.
- The **Smart Motion** tab allows a search for recordings based on motion in designated areas of a particular camera picture.
- The **Text** tab allows a search for recordings based on a text string.
- The **Protected** tab allows management of protected recordings (not available for Divar XF).



Cameo information

The date and time are shown under the player window. All the displayed cameras are synchronized to the same play time.





3.2 Top button bar

3.2.1 Selecting single or multiscreen views

In a default-sized playback window:

1. Click the single  button to view the images from one camera.
2. Click the quad  button to simultaneously view the images of four cameras;
 - The 3x3 and 4x4 modes are not selectable.


In an enlarged playback window:

1. Click one of the camera view     buttons to change the multiscreen display configuration.
2. To manually cycle through the available views, click the multiscreen button.

3.2.2 Text unit

To view text from a Divar, it must have an ATM/POS bridge unit and a license installed.


To view recorded transactions:

1. Click a cameo to select a particular camera.
2. Click the text  icon.
 - The text viewer window opens.
 - The data associated with the selected camera is displayed in the viewer window.

3.2.3 Capturing a still image

Capture still images from a camera and save them to the PC hard disk in a bitmap format.


To save an image from the active cameo to the PC hard disk:

1. Click the snapshot  icon.
 - The Snapshot pop-up window appears.
2. Browse to the new location in the PC file system to change the default image storage location.
3. Type a new name for the file to change the file name.
4. Click **Save**.


The snapshot has the same resolution as the video image, depending on the recording settings. Authentication information is shown under the image.

3.2.4 Selecting viewing window size

The playback viewing window has two sizes, default and enlarged. Default size contains the search criteria and results, with the video in the upper left quadrant of the screen. Enlarged size occupies all of the center screen.

Click the playback window size  button to switch between the default and enlarged sizes.

3.2.5 Audio

Click **audio**  to enable or disable audio playback or adjust the volume. When enabled, the audio of the selected archive will be heard, if available.

3.3 Selecting a camera


To select a DVR, double-click a DVR from the DVR tree at the top left of the screen. To view its video, double-click or drag to the view window a numbered camera icon.



Figure 3.2 DVR tree in playback window


3.4 Using the playback controls

Play

Click **Play**  to play forward streaming video in the playback window:


- The playback speed depends on the setting of the speed slider.
- Some frames may be dropped depending on the PC resources and the selected playback speed. This is indicated by the **Frame loss** icon lighting up yellow.

Play Reverse


Click **Play reverse**  to play streaming video in reverse in the playback window:

- The playback speed depends on the setting of the speed slider.
- Some frames may be dropped depending on the bandwidth of the connection and the playback speed. This is indicated by the **Frame loss** icon lighting up yellow.

Playback Speed

The speed slider  controls the speed of the continuous forward and reverse play.


Still

Click **Still**  to freeze the image:

- The last streamed image is shown as a still in the playback window.


Step forward


The step icon is only enabled in the still mode.

1. Click **Step forward**  to advance the image one frame.
2. Hold it down to continue stepping.

Step backward

The step icon is only enabled in the still mode.

1. Click **Step backward**  to reverse the image one frame.
2. Hold it down to continue stepping.

To see authenticity information for the current still image, click the information  icon in the top button bar.

Select the **Key frames only** check box to view only the key frames of the playback video. This results in a lower update rate of images but requires less PC performance.

3.5 Overview tab

The **Overview** tab in the playback window provides a graphical representation of the video recorded on the Divar storage system. Play back this video or make a selection for authenticity checking, archiving, exporting, deletion, or protection.

3.5.1 Earliest and latest recording times

- The **Earliest** box indicates the date and time of the oldest recording on disk.
- The **Latest** box indicates the date and time of the newest (most recent) recording on disk.

3.5.2 Date and time of selected image area

The contents of the **From** and **To** boxes show the positions in time of the start and end vertical hairline in the time line display.

3.5.3 Time line scale

Adjust the time line by selecting one of the following time scales from the **Scale** drop-down box:

- 15 minutes, 1 hour, 1 day, 1 week, 1 month, All.

All shows all recordings from earliest to latest.

To zoom in on a smaller section of the time line, select a shorter time period.

3.5.4 Time line display

Initially, the time line display shows all the camera recordings on the Divar storage system. The camera line shows the periods of recording and the alarms and events registered. The colors on the camera lines symbolize the following:

- Semi-transparent: no recordings have been made
- Blue: the camera images were recorded
- Yellow: a motion event was triggered
- Black: video loss occurred
- Red: external alarm event occurred
- Green: audio was recorded
- Black hatch: protected recordings

If several events have occurred simultaneously, the highest priority event is shown using the following order (highest to lowest priority):

- Video loss
- External alarm events
- Motion events
- Recordings
- No recordings

3.5.5 Date/time axis


The upper part of the date/time axis shows the date markers, the lower part the time markers.

3.5.6 Selecting recordings

1. Click a position on the time line to place a hairline.
2. Select a different time scale to zoom in or out from this position.
3. Drag the hairline for an interval selection;
 - The playback image window shows a still image of the selected camera at the hairline position.
 - The drag area is shaded.
4. Use the playback controls to initiate playback of the selection.

The detailed date and time of the hairlines is shown in the **From** and **To** boxes.

3.5.7 Disk Space usage (Divar Classic only)

A usage bar indicates the percentage space of the Divar storage system that has been used. Dark blue indicates the percentage space used in total. Light blue indicates the portion that is protected against overwriting. When in linear recording mode, the bar changes to red if the disk usage is above the disk-full threshold defined in the configuration. Click the information  button beside the usage bar to get detailed information about the storage system.

3.6 Search tab

Set up a search filter for events on the **Search** tab of the playback window. Select recorded video for playback from the search results list.

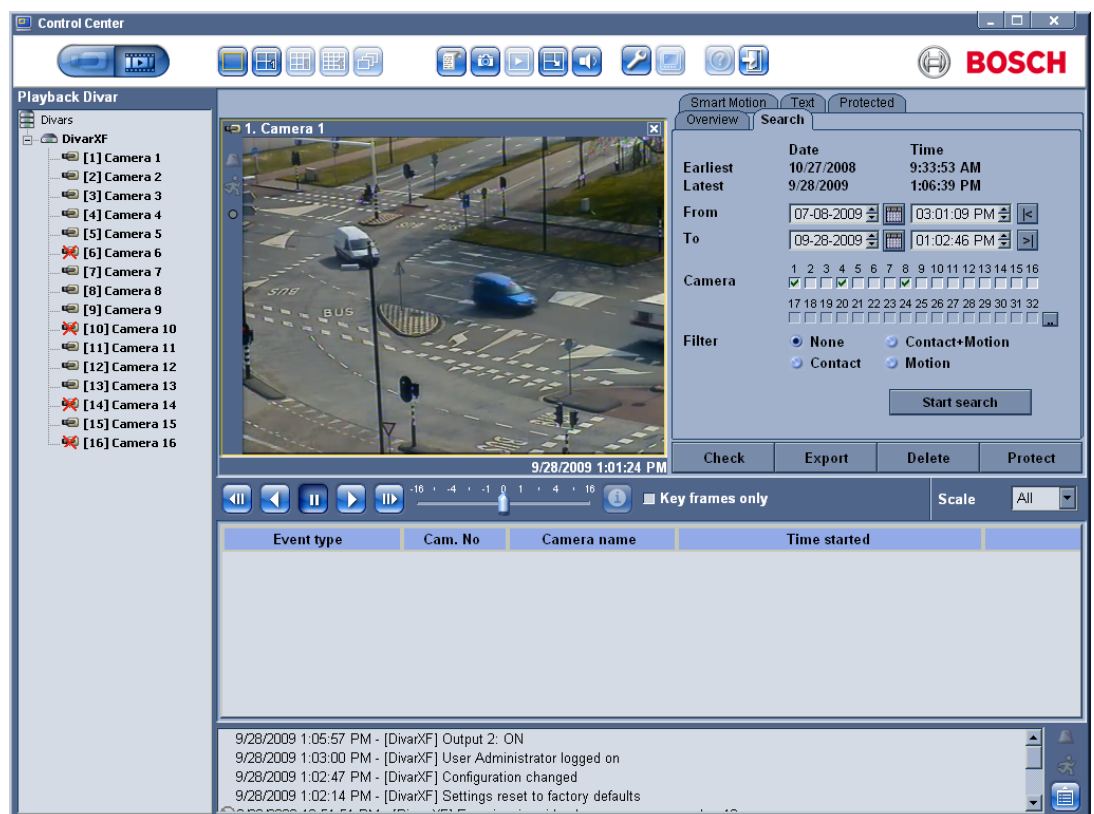


Figure 3.3 Playback window - Search tab

3.6.1 Oldest and newest recording times



- The **Earliest** box indicates the date and time of the oldest recording on disk.
- The **Latest** box indicates the date and time of the newest (most recent) recording on disk.

3.6.2 Setting the search period


Enter the date and time in the **From** and **To** boxes to define the period to search:

- The **To** box shows the time and date of the latest (newest) recording and the **From** box the earliest (oldest) recording by default.

3.6.3 Go to function

Enter a date and time in the **From** box and then click the  control; playback starts at the time and date entered. Alternatively, click the  control to start playback at the **To** time entered.

3.6.4 Camera selection

Click in a camera selection box to place a check mark under those cameras to be included in the search. Click  to select all or none.

3.6.5 Event filter

Specify the type of event to search for.

None: all recorded video for the selected cameras is searched for within the defined period (including alarm and motion events).

Alarm events: all recorded alarm video for the selected cameras is searched for within the defined period.

Alarm and motion events: all recorded alarm and motion event video for the selected cameras is searched for within the defined period.

Motion events: all recorded motion event video for the selected cameras is searched for within the defined period.

3.6.6 Start search

Click **Start search** to start the search.

3.6.7 Search results

When the search is completed, a list of video clips that match the filter criteria is displayed. This list shows the latest event recordings at the top, the earliest at the bottom.

1. Click on a column header to sort the list according to that column item. Click a second time to sort the list in reverse order.
2. Use the scroll bar to examine the full list.
3. Click on an entry in the list to select it;
 - The selected event is displayed in the playback window.
4. Use the playback controls to adjust playback speed and direction.

3.7 Smart Motion tab

Set up a search filter for motion in designated areas of a camera picture in the **Smart Motion /Search** tab. Select the zones for motion detection by clicking in the picture grid in the **Smart Motion/Area** tab. From the results of the search, select recorded video for playback from the search results list.

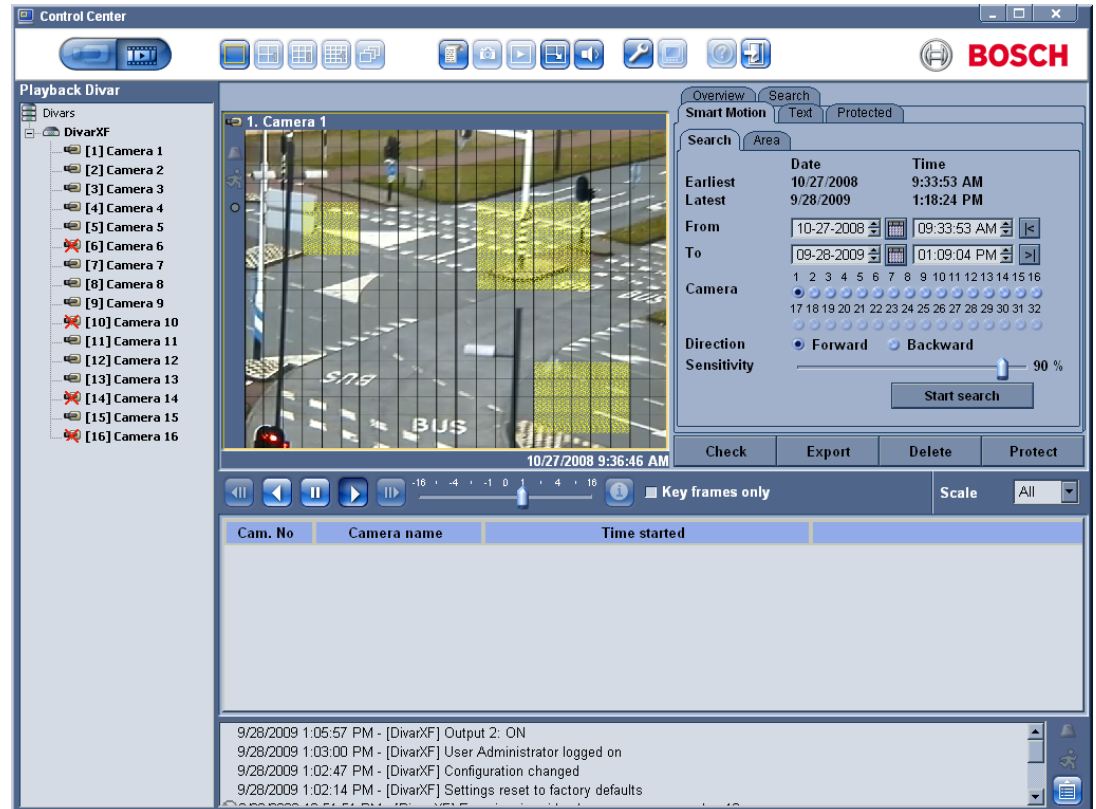


Figure 3.4 Playback window - Smart Motion/Search tabs

3.7.1 Oldest and newest recording times

- The **Earliest** box indicates the date and time of the oldest recording on disk.
- The **Latest** box indicates the date and time of the newest (most recent) recording on disk.

3.7.2 Setting the search period

Enter the date and time in the **From** and **To** boxes to define the period to search:

- The **To** box shows the time and date of the latest (newest) recording and the **From** box the earliest (oldest) recording by default.

3.7.3 Go to function

Enter a date and time in the **From** box and then click the **<** control; playback starts at the time and date entered. Alternatively, click the **>** control to start playback at the **To** time entered.

3.7.4 Camera selection

Click in a camera selection box to select a camera.

3.7.5 Search direction

Select **Forward** to search from start time to end time, or **Backward** to search from end time to start time.

3.7.6 Sensitivity

Adjust the **Sensitivity** slider to set the level of motion that will be detected. The highest value detects even the slightest motion.

3.7.7 Smart Motion tab

Select either **Add**, **Remove**, or **Toggle** to include or exclude an area in the smart motion search. Optionally, select all areas or clear all areas.

- In **Add** mode, left-click to add areas, right-click to remove areas.
- In **Remove** mode, left-click to remove areas, right-click to add areas.

Optionally, select all areas or clear all areas.

3.7.8 Show grid

Select **Show grid** to outline zones in the picture.

3.7.9 Start search

Click **Start search** to start the search.

3.7.10 Search results

When the search is completed, a list of video clips that match the filter criteria is displayed. This list shows the latest event recordings at the top, the earliest at the bottom.

1. Click on a column header to sort the list according to that column item. Click a second time to sort the list in reverse order.
2. Use the scroll bar to examine the full list.
3. Click on an entry in the list to select it;
 - The selected event is displayed in the playback window.
4. Use the playback controls to adjust playback speed and direction.

3.8 Text tab

On the **Text** tab of the playback window, set up a search filter to search for recordings based on a text string. The Divar must be connected via an ATM/POS bridge unit and set up to record text data. From the results of the search, select recorded video for playback from the search results list.

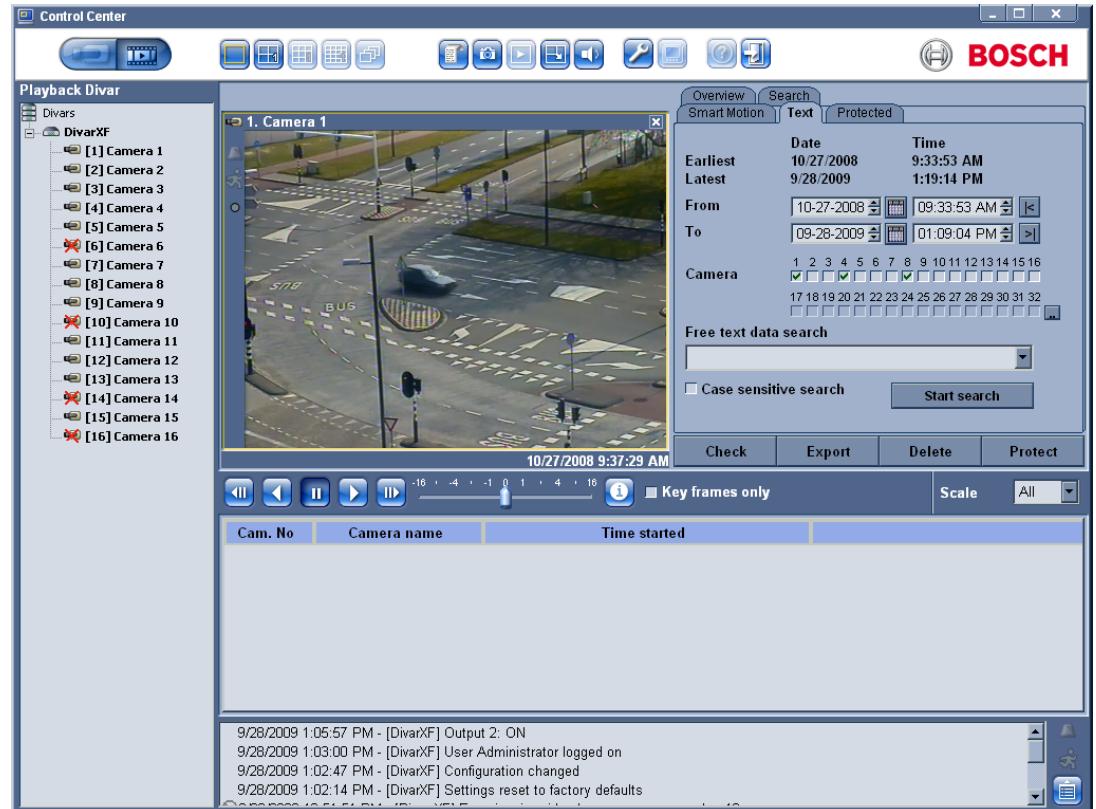


Figure 3.5 Playback window - Text tab

3.8.1 Oldest and newest recording times



- The **Earliest** box indicates the date and time of the oldest recording on disk.
- The **Latest** box indicates the date and time of the newest (most recent) recording on disk.

3.8.2 Setting the search period


Enter the date and time in the **From** and **To** boxes to define the period to search:

- The **To** box shows the date and time of the latest (newest) recording and the **From** box the earliest (oldest) recording by default.

3.8.3 Go to function

Enter a date and time in the **From** box and then click the  control; playback starts at the time and date entered. Alternatively, click the  control to start playback at the **To** time entered.

3.8.4 Camera selection

Click in a camera selection box to place a check mark under those cameras to be included in the search. Click  to select all or none.

3.8.5 Free text data search

Enter the text string to search (for example, this can be a name or a credit card number).

3.8.6 Case sensitive search

Select for a case sensitive search.

3.8.7 Search results

When the search is completed, a list of video clips that match the filter criteria is displayed. This list shows the latest event recordings at the top, the earliest at the bottom.

1. Click on a column header to sort the list according to that column item. Click a second time to sort the list in reverse order.
2. Use the scroll bar to examine the full list.
3. Click on an entry in the list to select it;
 - The selected event is displayed in the playback window.
4. Use the playback controls to adjust playback speed and direction.

3.9 Protected tab (Divar Classic only)

The **Protected** tab of the playback window provides an overview of the protected recordings on the Divar. Select protected video for playback or unprotect, check authenticity, archive or export protected recordings.

The screenshot shows the Bosch Control Center interface. On the left is a tree view of cameras from [1] to [16]. The main window is titled '1. Camera 1' and shows a live video feed of a street intersection. Below the video are playback controls including play, stop, and speed buttons. At the bottom, the 'Protected' tab is active, displaying a table of search results and a log of events.

Name	Cam. No	Time started		Time finished	
20081027103353	All	10/27/2008	9:33:53 AM	10/28/2008	4:44:13 PM
20090109153044	All	12/23/2008	11:36:17 AM	12/23/2008	5:37:18 PM

Log entries:

- 9/28/2009 1:05:57 PM - [DivarXF] Output 2: ON
- 9/28/2009 1:03:00 PM - [DivarXF] User Administrator logged on
- 9/28/2009 1:02:47 PM - [DivarXF] Configuration changed
- 9/28/2009 1:02:14 PM - [DivarXF] Settings reset to factory defaults

Figure 3.6 Playback window - Protected tab

3.9.1 Oldest and newest recording times

- The **Earliest** box indicates the date and time of the oldest recording on disk.
- The **Latest** box indicates the date and time of the newest (most recent) recording on disk.

3.9.2 Disk space used

A usage bar indicates the percentage space of the Divar storage system that has been used. Dark blue indicates the percentage space used in total. Light blue indicates the portion that is protected against overwriting. The bar changes to red if the disk usage is above the disk-full threshold defined in the configuration.

Click the question mark icon beside the usage bar to get detailed information about the storage system.

3.9.3 Setting the search period

Enter the date and time in the **From** and **To** boxes to define the period to search:

- The **To** box shows the time and date of the latest (newest) recording and the **From** box the earliest (oldest) recording by default.

3.9.4 Searching for protected recordings

Click **Start search** to start the search.

3.9.5 Search results

When the search is completed, a list of video clips that fulfill the filter criteria is displayed.


This list shows the latest event recordings at the top, the earliest at the bottom:

1. Click on a column header to sort the list according to that column item. Click a second time to sort the list in reverse order.
2. Use the scroll bar to examine the full list.
3. Click on an entry in the list to select it;
 - The selected event is displayed in the playback window.
4. Use the playback controls to adjust playback speed and direction.
5. Automatically protected clips in the list are indicated by **Auto!**
6. **Unprotect** removes the protection from the selected video clips.

3.10 Handling recordings

3.10.1 Checking authenticity

1. Select a video recording.
2. Click **Check** to verify the authenticity of the selected video;
 - An information window indicates the authenticity of the selected video.

Click  on the control bar for authenticity verification of individual frames. This opens the Authenticity information window. This window shows the details of the video frame in the respective cameo at the time the icon was clicked.

Click **OK** to close the window.

3.10.2 Exporting recordings to a PC hard disk

Recordings that are exported to the local PC hard disk are in a special Divar file format. The Archive Player required to play back the archive is automatically copied from the Control Center to the location where the archive is stored. Separate installation of the Archive Player is not necessary. The video is archived in its native format, keeping its proof of authenticity. To store recordings from a selected period on a PC hard disk:

1. Select a recording period in the **Overview**, **Search**, or **Protected** (Divar Classic only) tab screens.
2. Click **Export**;
 - The Export pop-up window appears.
3. To change the default location, browse to the location in the PC file system where the archive file is to be stored.
4. Type a new name for the file to change the file name.
5. Select which cameras to archive in the confirmation window that appears;
 - All cameras are included by default.
6. Enter new values in the **From** and **To** boxes to change the selection start and end date/time;
 - The approximate size of the archive file is shown. Ensure that there is sufficient space to store this file.
7. Click **Export** to start saving the archive file.

During exporting, a progress bar monitors the exporting process. All controls are unavailable during the exporting process except for **Cancel**.

3.10.3 Deleting recordings

The video to be deleted depends on the position of the hairline marker.

1. Click the **Delete** button to delete all images older than the current end hairline position.
2. Modify the **to time**
3. Confirm or cancel the deletion in the confirmation window.

3.10.4 Protecting recordings (Divar Classic only)

Click the **Protect** button to prevent the selected recording in the **Overview** or **Search** tab from deletion or from being overwritten:

- Type a name for the protected recordings in the window that appears.
- The default name is the start date and time, for example: 20091114 173125
- A maximum of 1000 protected recordings can be stored.
- When choosing to protect a search result item, a default time range is initially displayed. The start time defaults to 30 seconds prior to the event. The end time defaults to 1 minute after the start time.
- The disk space indicator shows the estimated percentage of the protected region on the disk after this protect operation is completed.

3.10.5 Unprotecting recordings (Divar Classic only)

The **Unprotect** button is only available when the **Protected** tab window is active.

1. Make a selection in the protected recordings list.
 2. Click the **Unprotect** button to remove protection from the selected item.
 3. Confirm or cancel the unprotect action in the confirmation window that appears.
- Once video is unprotected, it can be overwritten immediately if it is the oldest video on disk. The unprotect function is only available to the system administrator.

Bosch Security Systems
www.BoschSecurity.com

© Bosch Security Systems, 2009