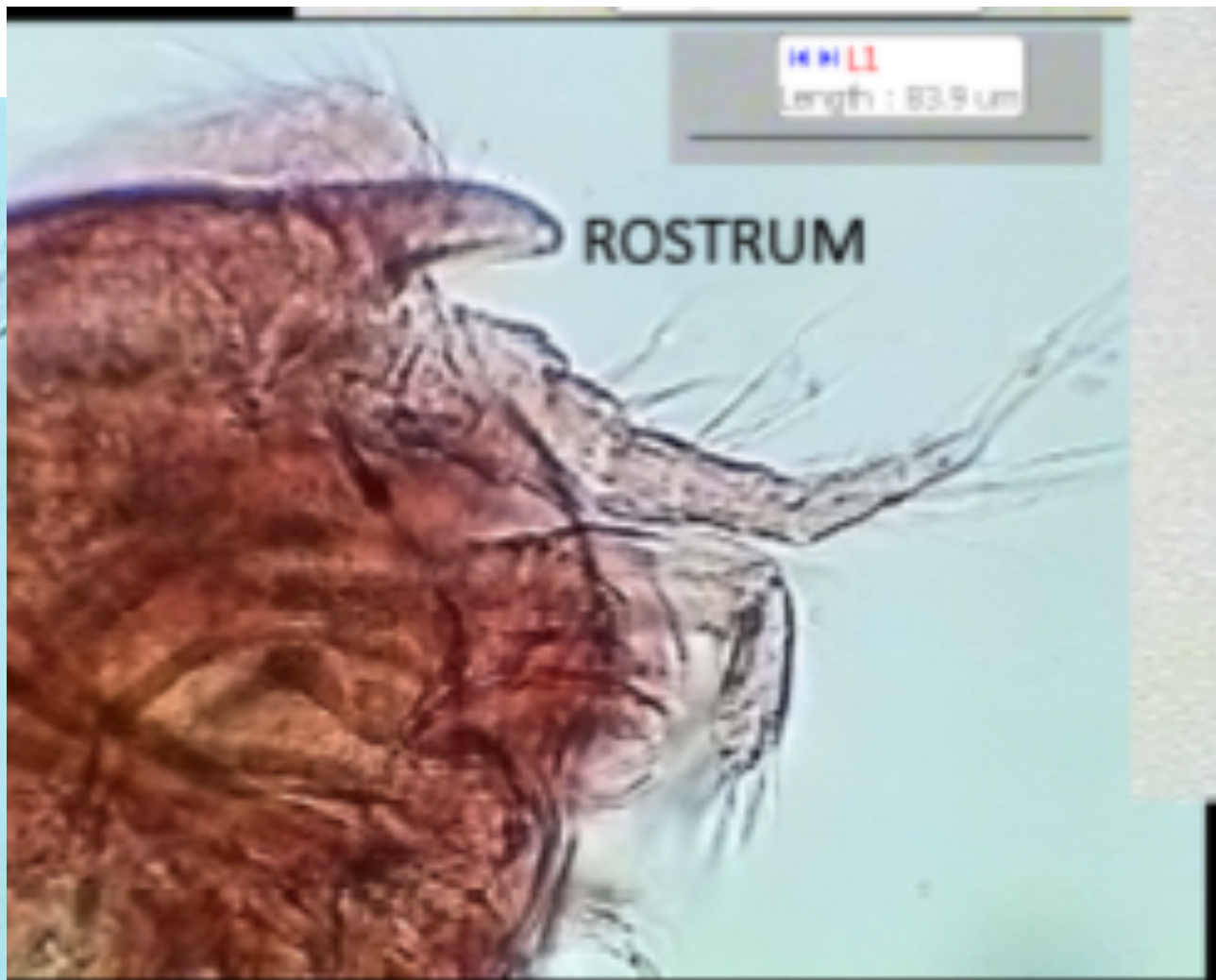


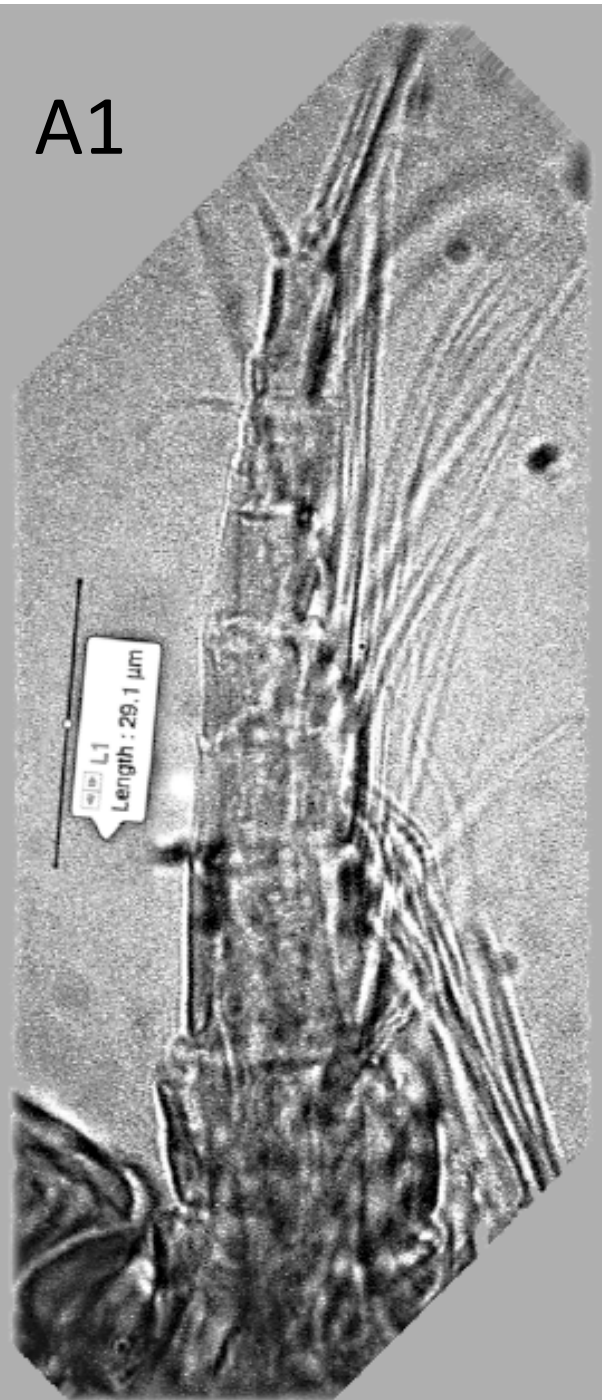
IN O'LL
Length : 275.5 um



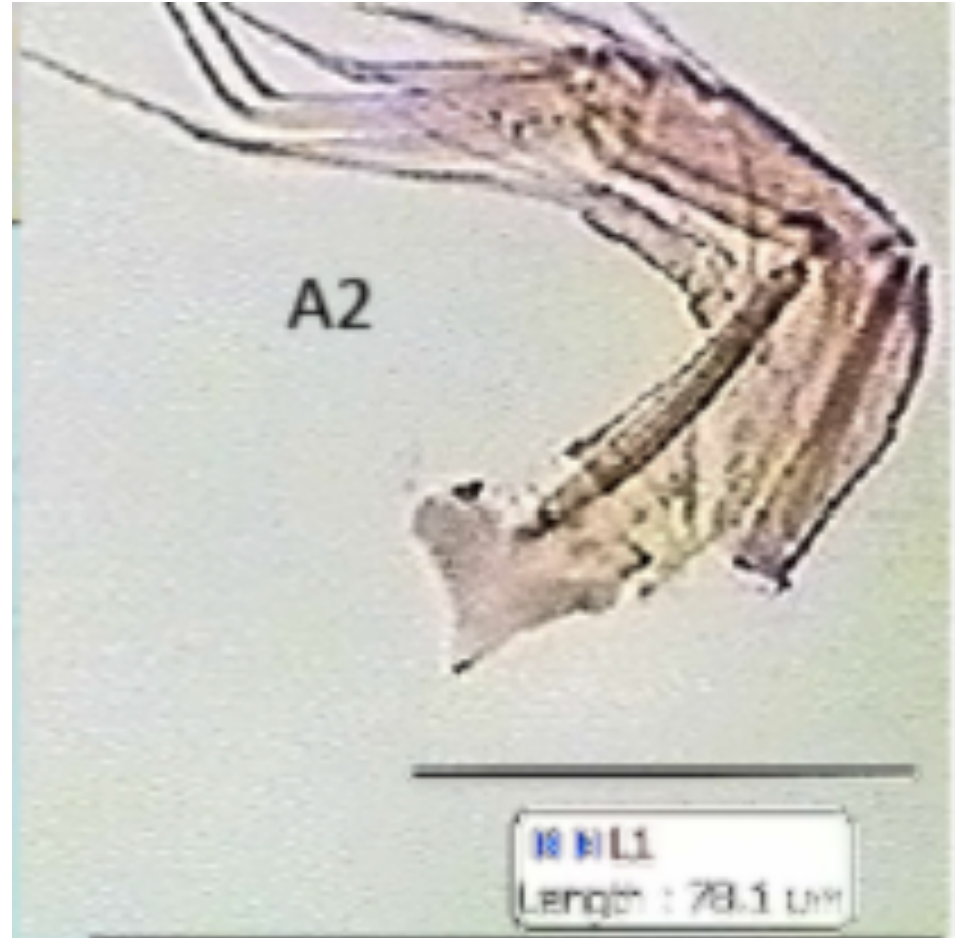
IN O'LL
Length : 83.9 um

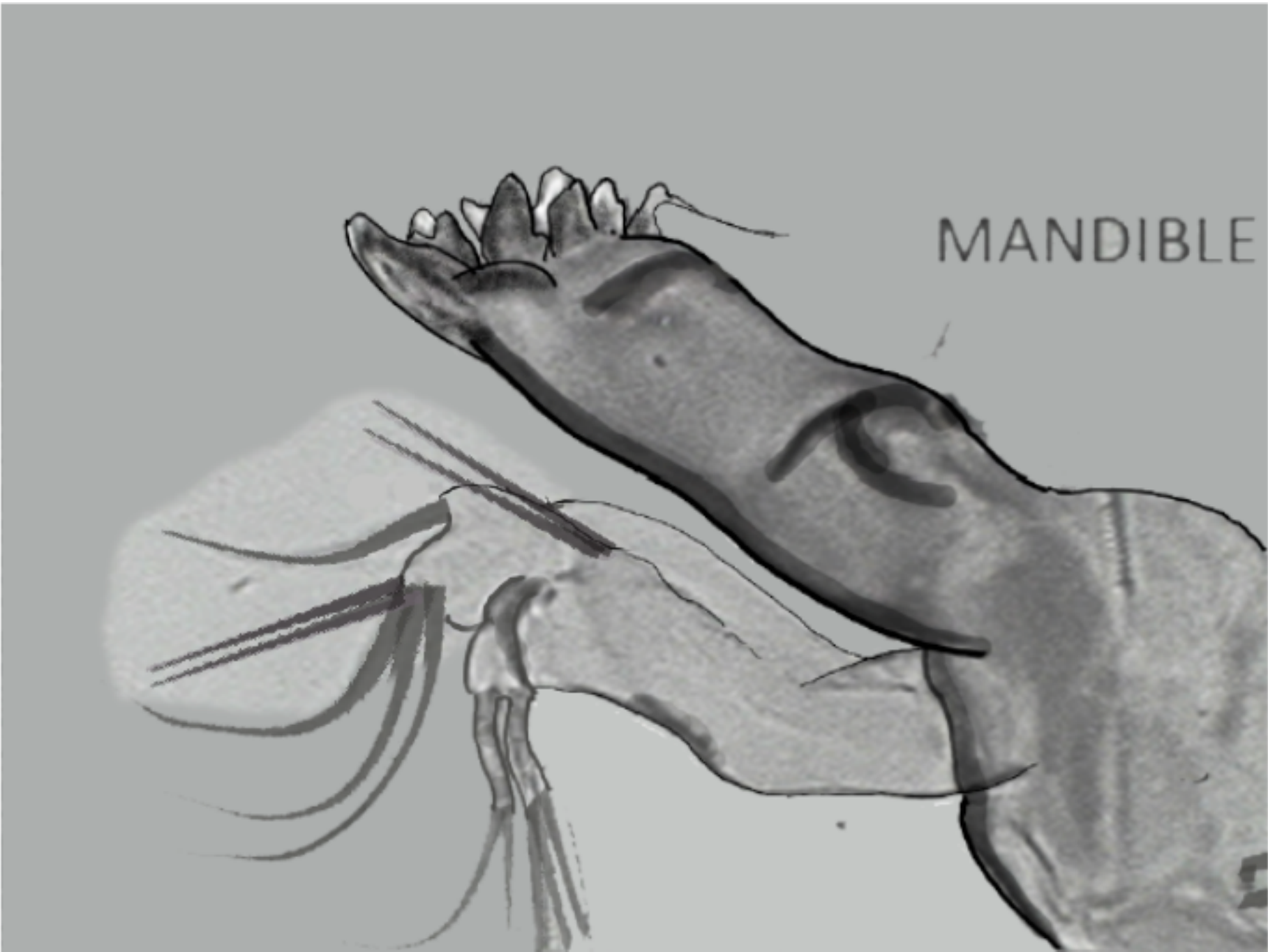
ROSTRUM

A1



A2

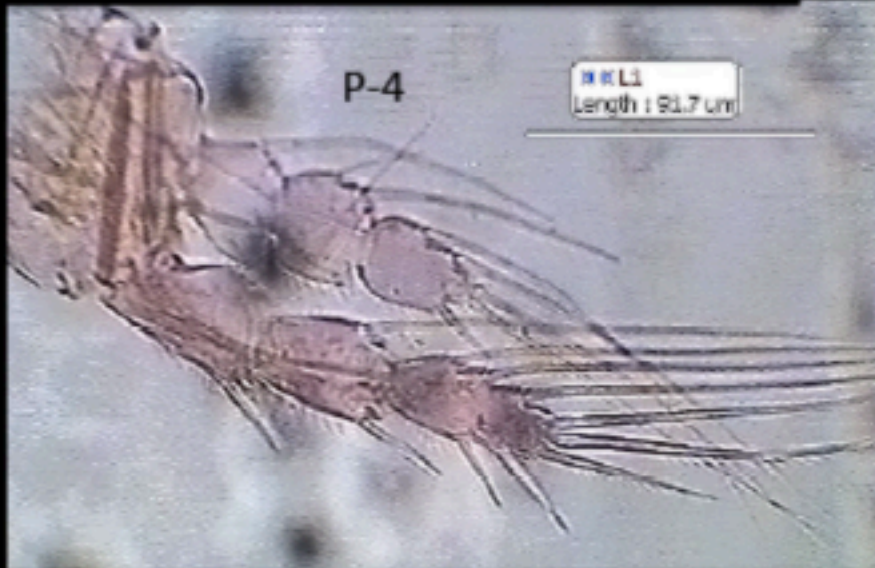
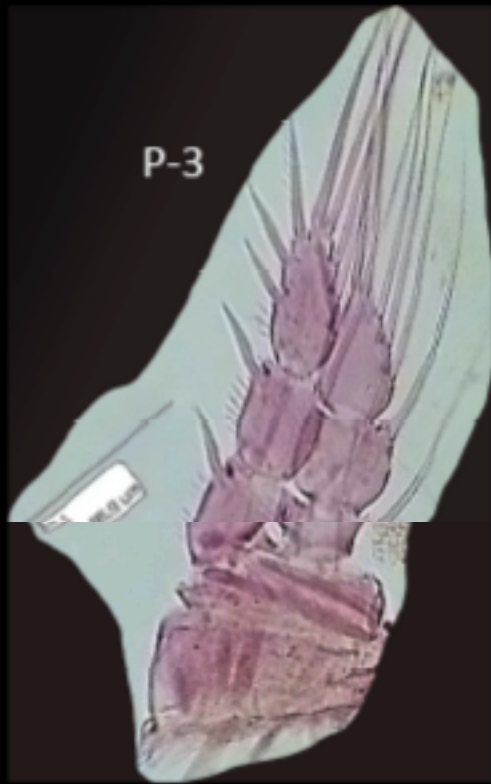




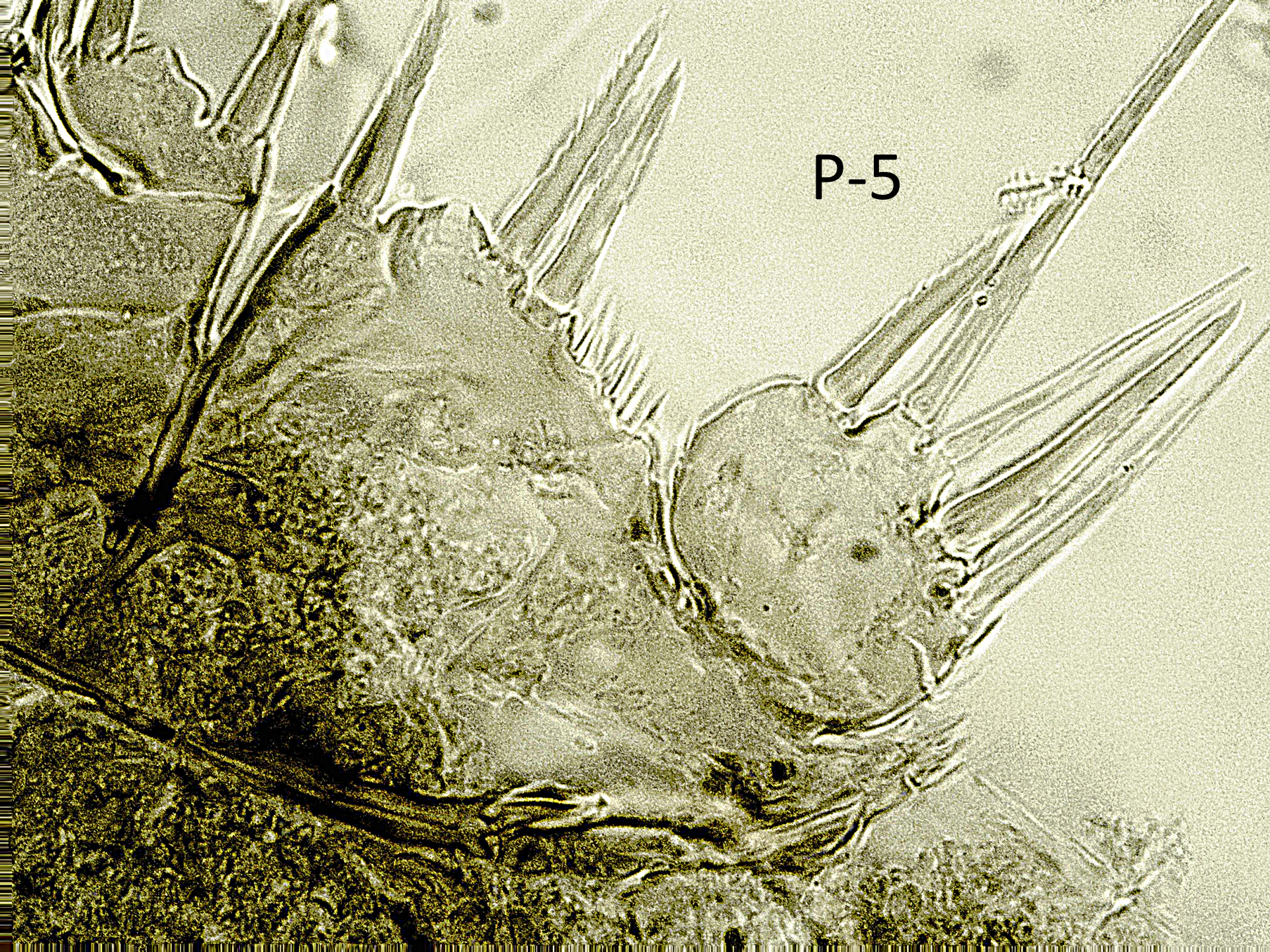


P-1





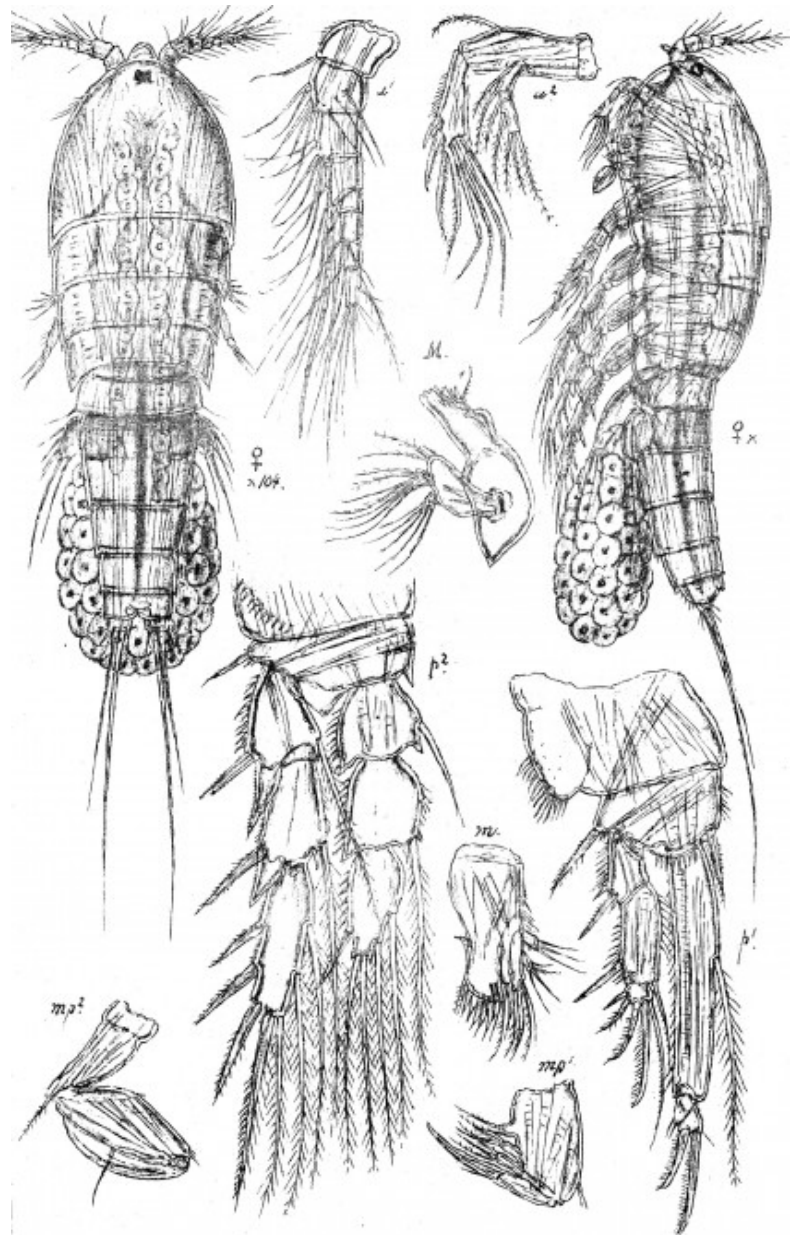
P-5



Dactylopusia tisboides (Claus), a species similar to *D. paratisboides*.

Figure (in WORMS) from Sars, 1905

(CC-BY license)



Dactylopusia tisboides (Claus.)